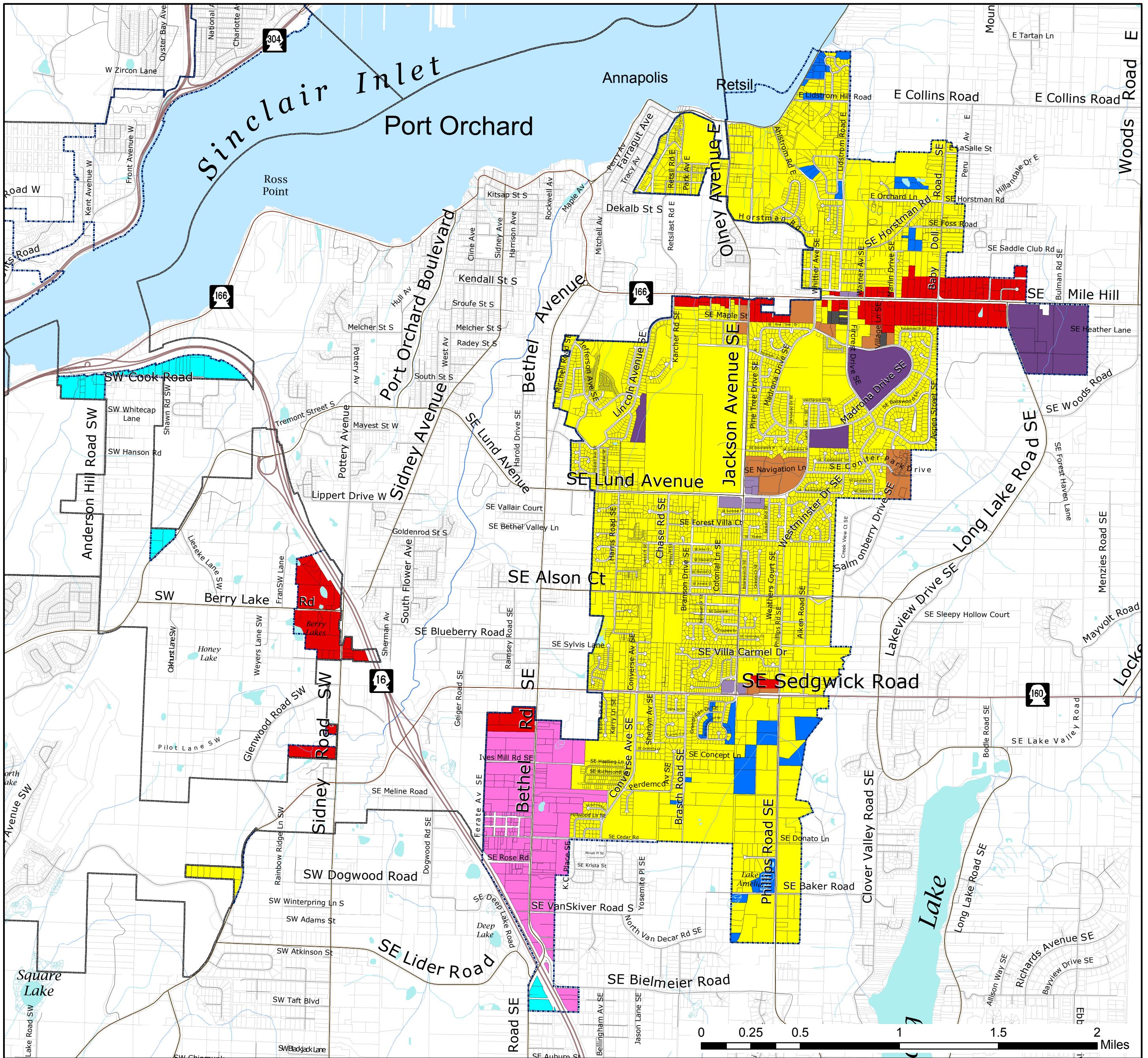


Port Orchard Urban Growth Area



	Highway/Tourist Commercial (10-30 DU/Ac)		State Highway
	Neighborhood Commercial (10-30 DU/Ac)		Major Road
	Mixed Use (10-30 DU/Ac)		Collector / Arterial
	Industrial		Local Access; Local Road
	Urban Restricted (1-5 DU/Ac)		WaterBody Cartographic Feature
	Urban Low Residential (5-9 DU/Ac)		Bay, estuary, Puget Sound
	Urban Medium Residential (10-18 DU/Ac)		Lake, Pond or Reservoir
	Urban High Residential (19-30 DU/Ac)		Includes DNR, NWI and Surveyed Wetlands
	Park (Kitsap County)		Fish Habitat Water Type
	Urban Growth Area Boundary		Designated Shoreline of the State
	Incorporated City Boundary		Fish Habitat
	Tax Parcel Boundary		Non-fish Habitat
			Unknown, unmodeled hydrographic feature.

Zoning

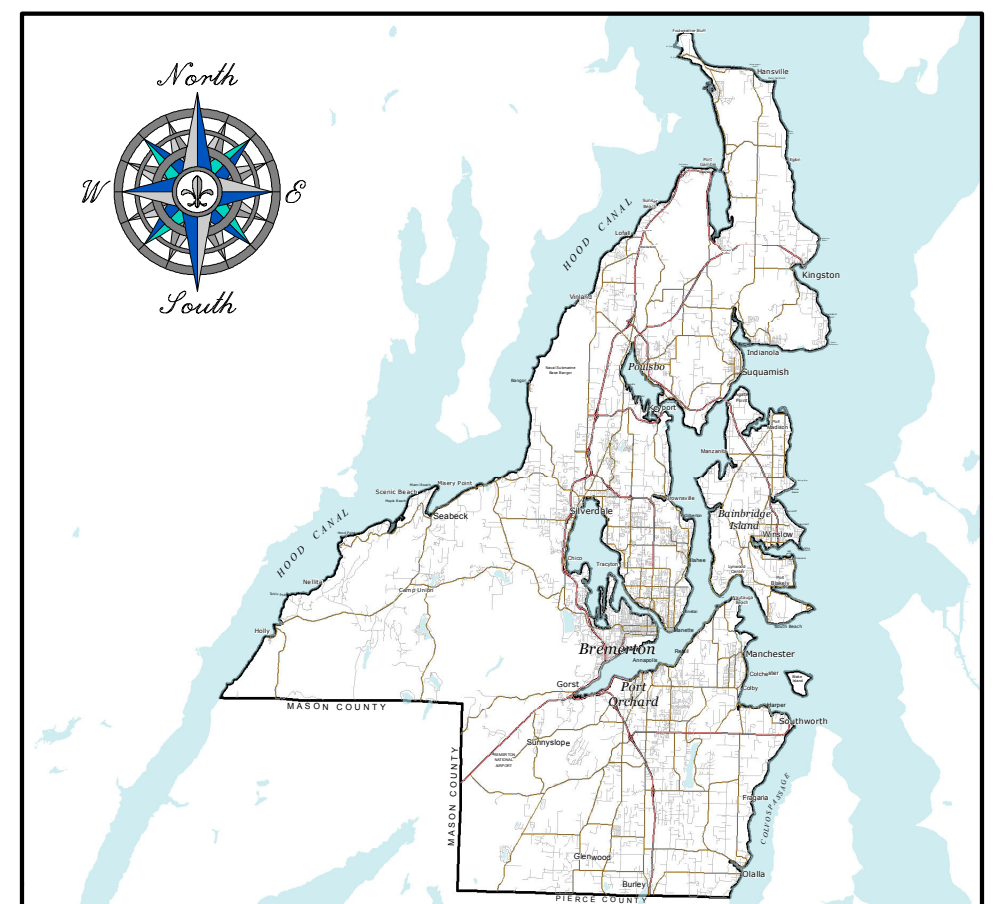
KITSAP COUNTY COMPREHENSIVE PLANNING MAP SERIES
 This map was developed for general land use planning purposes. The user of this map must assume responsibility for determining its suitability for other purposes.

Amendments:

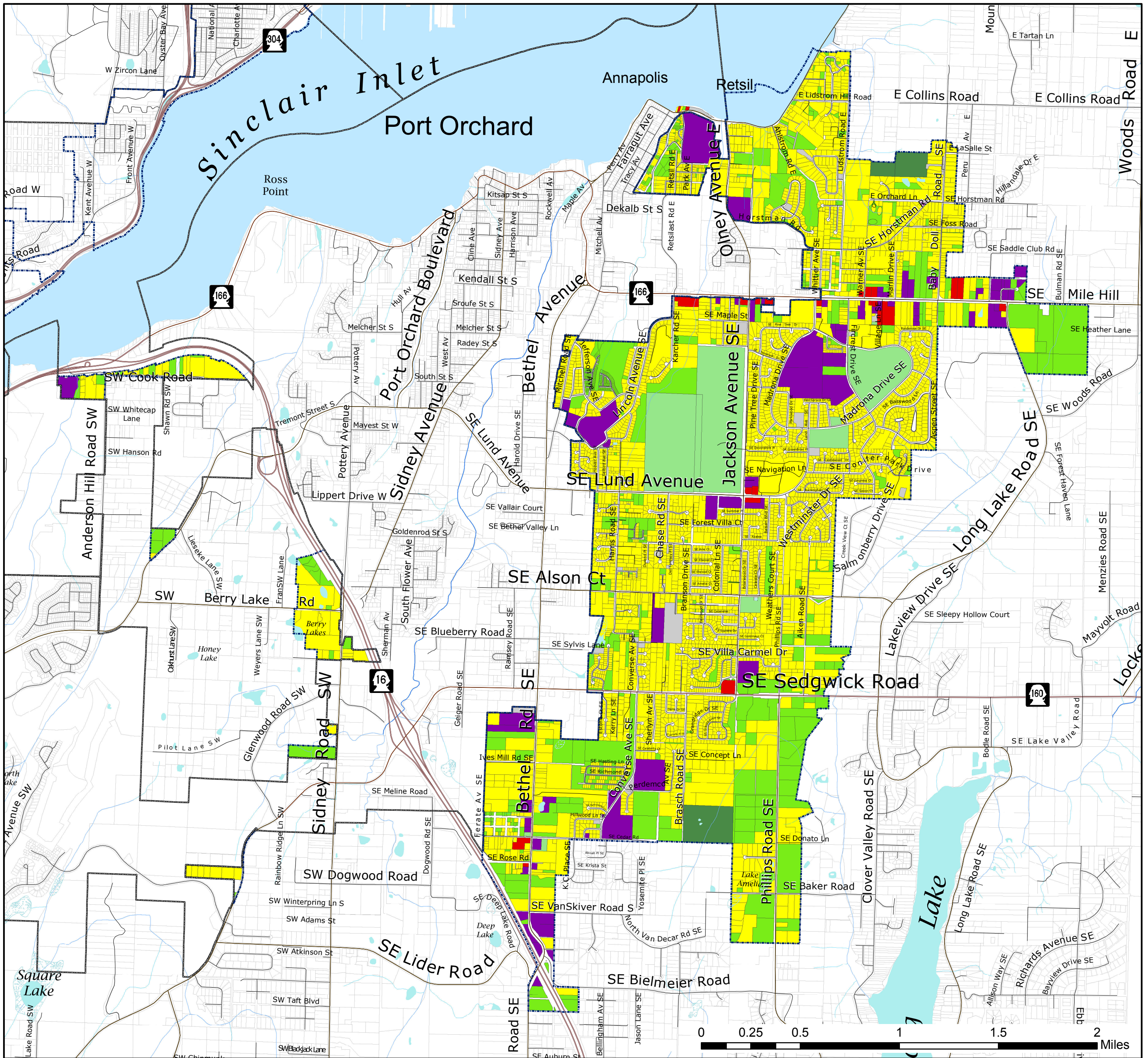
February 8, 1999	Forest Resource Lands
April 19, 1999	Squamish Rural Village
May 10, 1999	Modified Joint Planning Areas
July 21, 1999	Port Gamble Rural Historic Town
June 10, 2002	Manchester Community Plan
June 10, 2002	Ord No. 274-2002 Comprehensive Plan/Zoning Amendments
September 8, 2003	Res No. 168-2003 (Map Corrections)
December 8, 2003	Ord No. 311-2003 Comprehensive Plan/Zoning Amendments
October 25, 2004	George's Corner Commercial LAMIRD
October 25, 2004	Ord No. 326-2004 Comprehensive Plan/Zoning Amendments
December 22, 2005	Ord No. 352-2005 Comprehensive Plan/Zoning Amendments
December 11, 2006	Ord No. 370-2006 10-Year Update
June 11, 2007	Ord No. 384-2007 Repeal of Urban Holding Zone (UHA)
November 19, 2007	Ord No. 402-2007 Keyport Community Plan
December 31, 2007	Ord No. 405-2007 Comprehensive Plan/Zoning Amendments
October 13, 2008	Ord No. 414-2008 Comprehensive Plan/Zoning Amendments
December 23, 2008	Ord No. 420-2008 Comprehensive Plan/Zoning Amendments
December 14, 2009	Ord No. 443-2009 Comprehensive Plan/Zoning Amendments
December 15, 2010	Ord No. 467-2010 Comprehensive Plan/Zoning Amendments
December 15, 2010	Ord No. 467-2010 Type III LAMIRDS
August 31, 2012	Ord No. 493-2012 2012 Urban Growth Area - Remand
December 13, 2012	Ord No. 498-2012 Comprehensive Plan/Zoning Amendments



Kitsap County Department of Community Development
 614 Division Street, MS-36
 Port Orchard, Washington 98366
 VOICE (360) 337-5777 * FAX (360) 337-4925



Port Orchard Urban Growth Area



Cultural, Entertainment and Recreational	Urban Growth Area Boundary
Industrial and Manufacturing Services	Incorporated City Boundary
Residential	Tax Parcel Boundaries
Resource Production and Extraction	State Highway
Retail Trade	Major Road
Services	Collector / Arterial
Transportation, Communications and Utilities	Local Access; Local Road
Undeveloped Land and Water Areas	

Waterbodies (defined in WAC 222-16-030)
WaterBody Cartographic Feature Code
 Bay, estuary, Puget Sound
 Lake, Pond, Reservoir, Gravel pit or quarry filled with water
 DNR, NWI, and Surveyed Wetlands

Watercourses (defined in WAC 222-16-030)
Fish Habitat Water Type Code
 (S) Designated Shoreline of the State
 (F) Fish Habitat
 (N) Non-fish Habitat
 (U) Unknown, unmodeled hydrographic feature.

Current Land Use

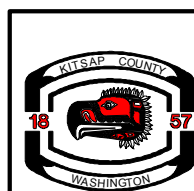
This map was created from existing map sources, not from field surveys. While great care was taken in using the most current map sources available, no warranties of any sort, including accuracy, fitness, or merchantability accompany this product. The user of this map assumes responsibility for determining its suitability for its intended use.

* THIS MAP IS NOT A SUBSTITUTE FOR FIELD SURVEY *

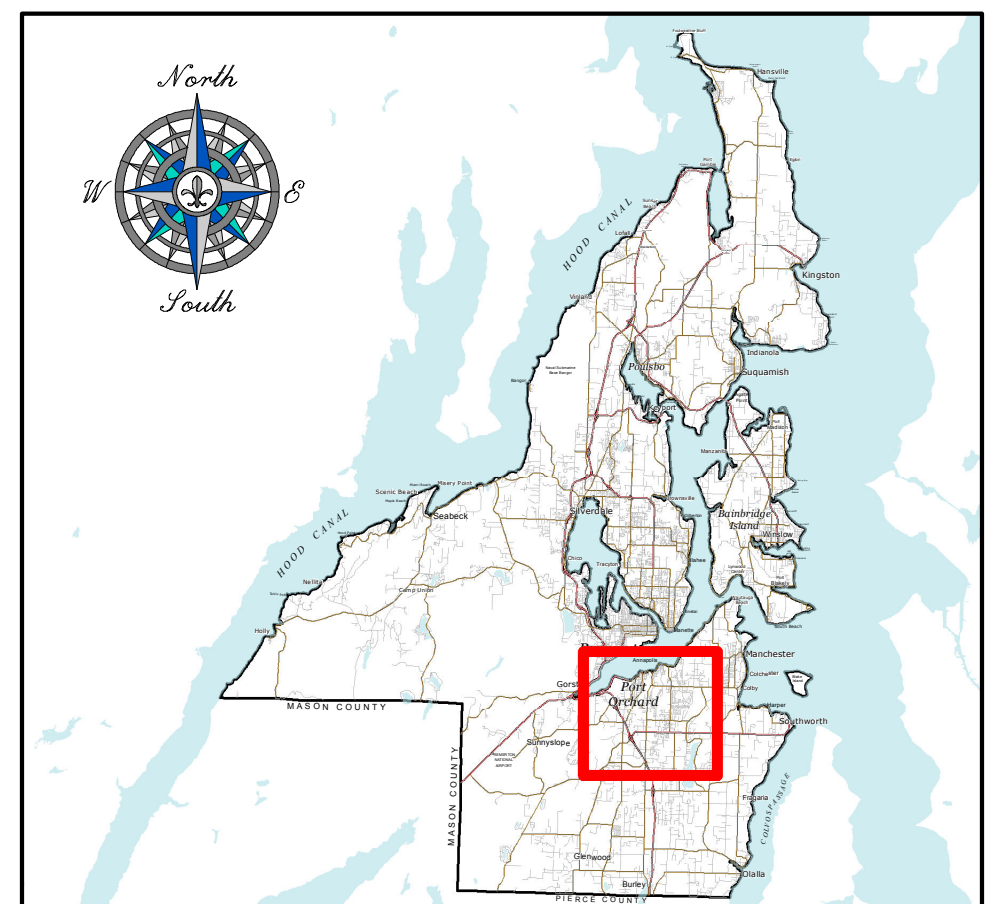
Current Land Use was created from information provided by the Kitsap County Assessors property class code.

DRAFT

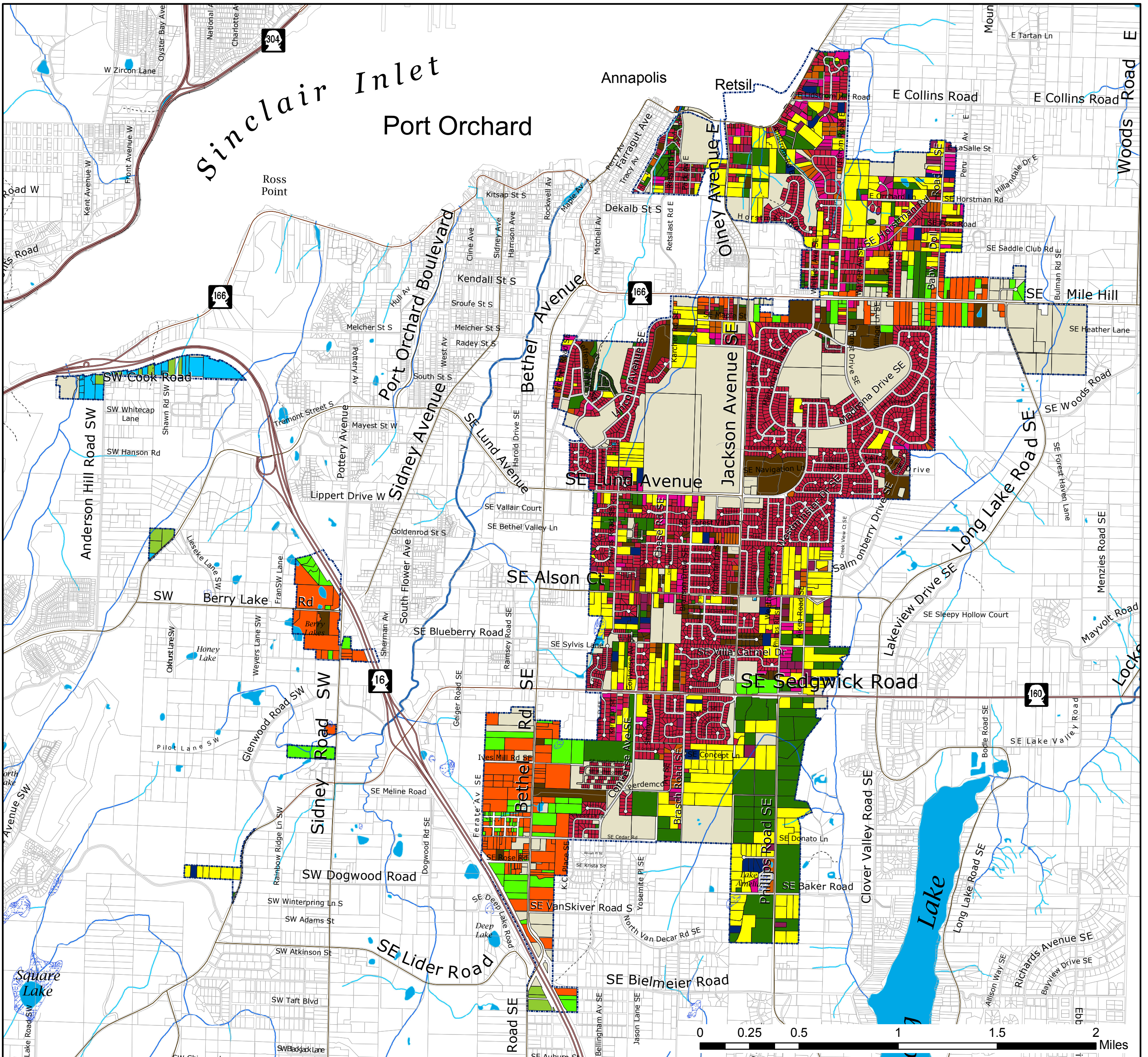
Map Date: September, 2013



Kitsap County Department of
 Community Development
 614 Division Street, MS-36
 Port Orchard, Washington 98366
 VOICE (360) 337-5777 * FAX (360) 337-4925



Port Orchard Urban Growth Area



Developed Parcel	Underutilized - Commercial
Parcel not considered for additional capacity	Vacant Land - Commercial
Underutilized - Residential	Underutilized - Industrial
Vacant Land - Residential	Vacant Land - Industrial
Parcel less than .50 acres	Urban Growth Area Boundary
Parcel density less than 2.5 times the zoning size	Incorporated City Boundary
Parcel density 2.5 - 4 times zoning size and building value is less than 1/2 median value	
Parcel density 4 - 5 times zoning size and building value is less than median value	
Parcel density 5 - 10 times zoning size and building value is less than 1.5 x median value	
Shoreline parcel less than 1.00 acre	
Multi-Family	
Waterbodies (defined in WAC 222-16-030)	Watercourses (defined in WAC 222-16-030)
WaterBody Cartographic Feature Code	Fish Habitat Water Type Code
Bay, estuary, Puget Sound	(S) Designated Shoreline of the State
Lake, Pond, Reservoir, Gravel pit or quarry filled with water	(F) Fish Habitat
DNR, NWI, and Surveyed Wetlands	(N) Non-fish Habitat
Tax Parcel	(U) Unknown, unmodeled hydrographic feature.
	State Highway
	Major Road
	Collector / Arterial
	Local Access, Local Road
	Railroad Lines

Land Capacity Analysis

This map was created from existing map sources, not from field surveys. While great care was taken in using the most current map sources available, no warranties of any sort, including accuracy, fitness, or merchantability accompany this product. The user of this map assumes responsibility for determining its suitability for its intended use.

* THIS MAP IS NOT A SUBSTITUTE FOR FIELD SURVEY *

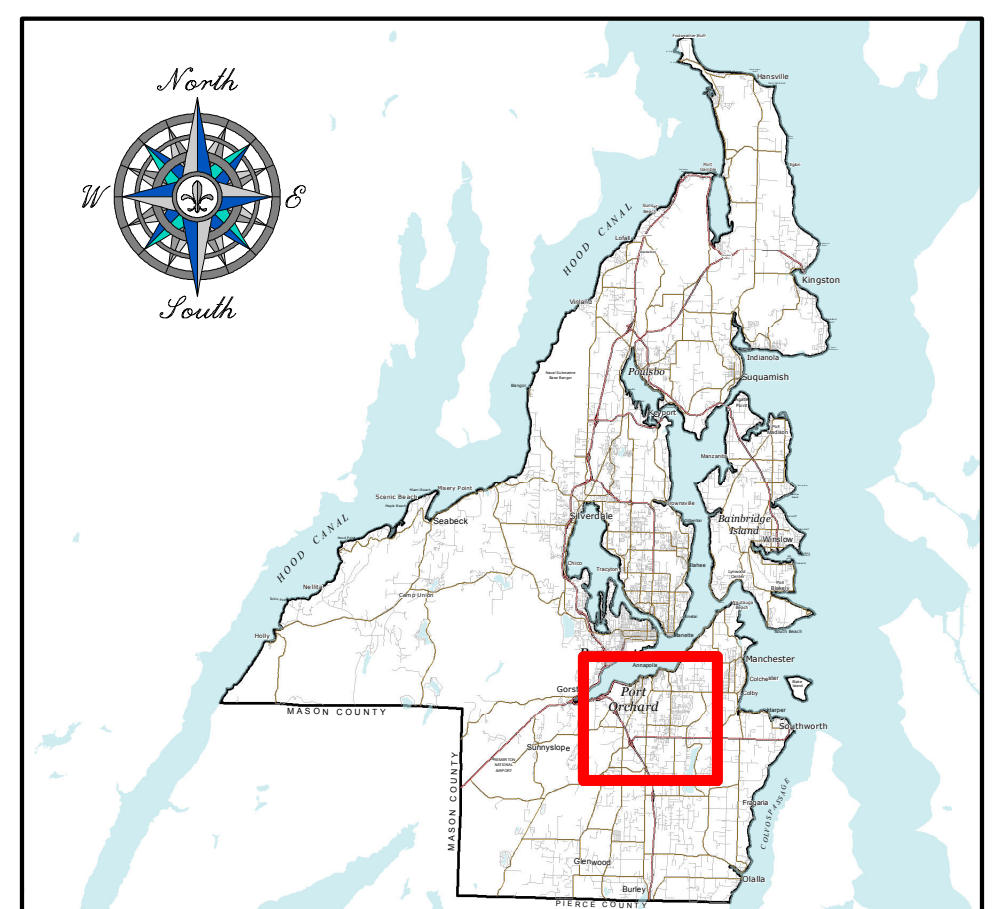
Vacant and Underutilized parcels created from Land Capacity Analysis were done as part of the Kitsap County Buildable Lands Analysis report. This data represents analysis from parcel data as reflected on January 2, 2012. Continuing permit and development activity will alter the vacant and underutilized parcels results.

DRAFT

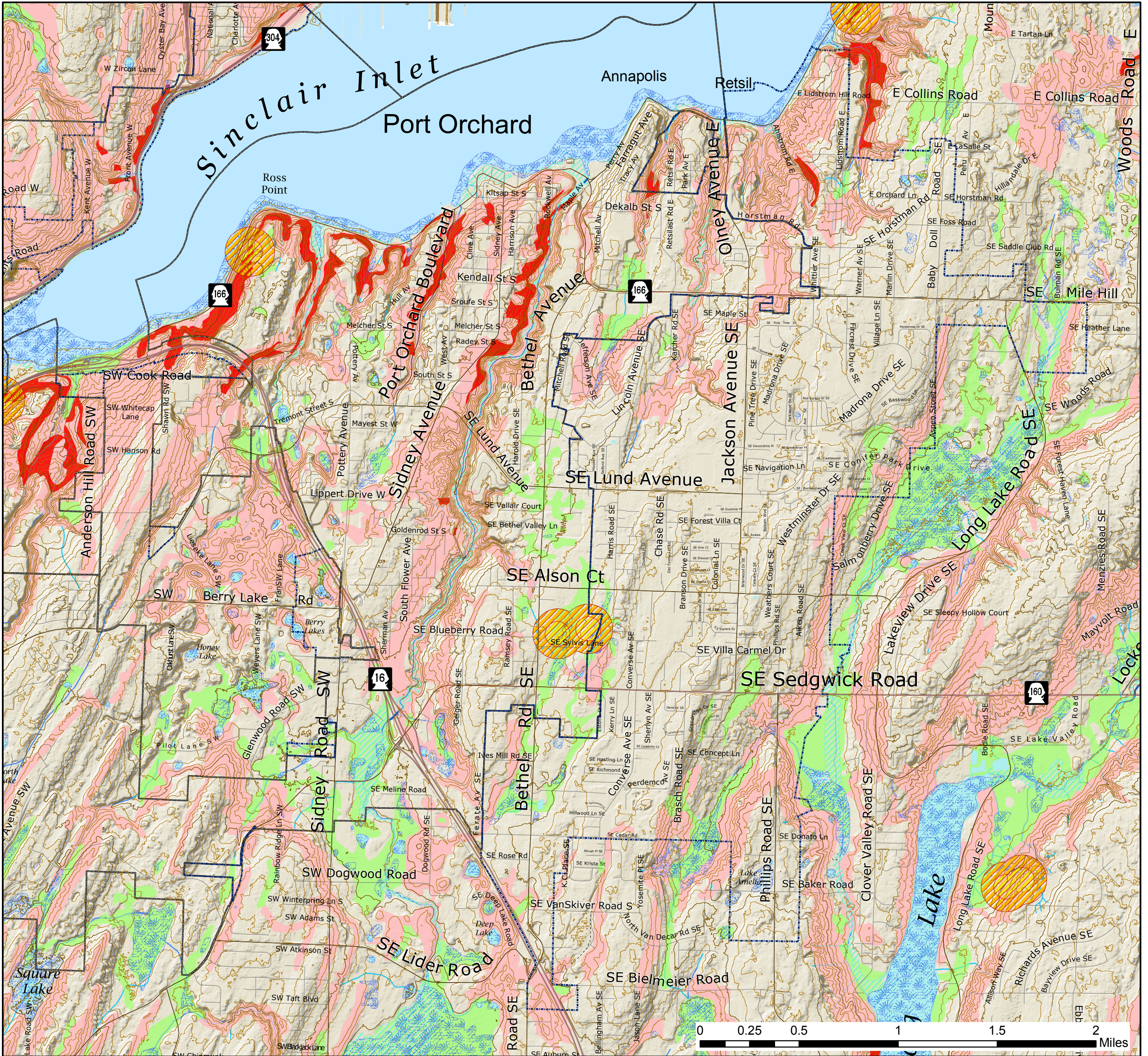
Map Date: September, 2013



Kitsap County Department of
Community Development
614 Division Street, MS-36
Port Orchard, Washington 98366
VOICE (360) 337-5777 * FAX (360) 337-4925



Port Orchard Urban Growth Area



<p>Waterbodies (defined in WAC 222-16-030)</p> <p>WaterBody Cartographic Feature Code</p> <ul style="list-style-type: none"> Bay, estuary, Puget Sound Lake, Pond, Reservoir, Gravel pit or quarry filled with water Includes DNR, NWI and Surveyed Wetlands <p>Watercourses (defined in WAC 222-16-030)</p> <p>Fish Habitat Water Type Code</p> <ul style="list-style-type: none"> (S) Designated Shoreline of the State (F) Fish Habitat (N) Non-fish Habitat (U) Unknown, unmodeled hydrographic feature. <p> 100 Year Floodplain <i>The primary risk classification shown is the 1-percent-annual-chance flood event</i></p> <p> Potential Wetlands</p> <p>Geohazards Description</p> <ul style="list-style-type: none"> High Hazard Areas Moderate Hazard Areas 	<ul style="list-style-type: none"> 100' Contours 20' Contours <p>Eagle Habitat Buffers</p> <ul style="list-style-type: none"> 330 Feet 660 Feet <ul style="list-style-type: none"> Tax Parcels Urban Growth Area Boundary Incorporated City Boundary State Highway Major Road Collector / Arterial Local Access; Local Road
--	--

Building Limitations

This map was created from existing map sources, not from field surveys. While great care was taken in using the most current map sources available, no warranties of any sort, including accuracy, fitness, or merchantability accompany this product. The user of this map assumes responsibility for determining its suitability for its intended use.

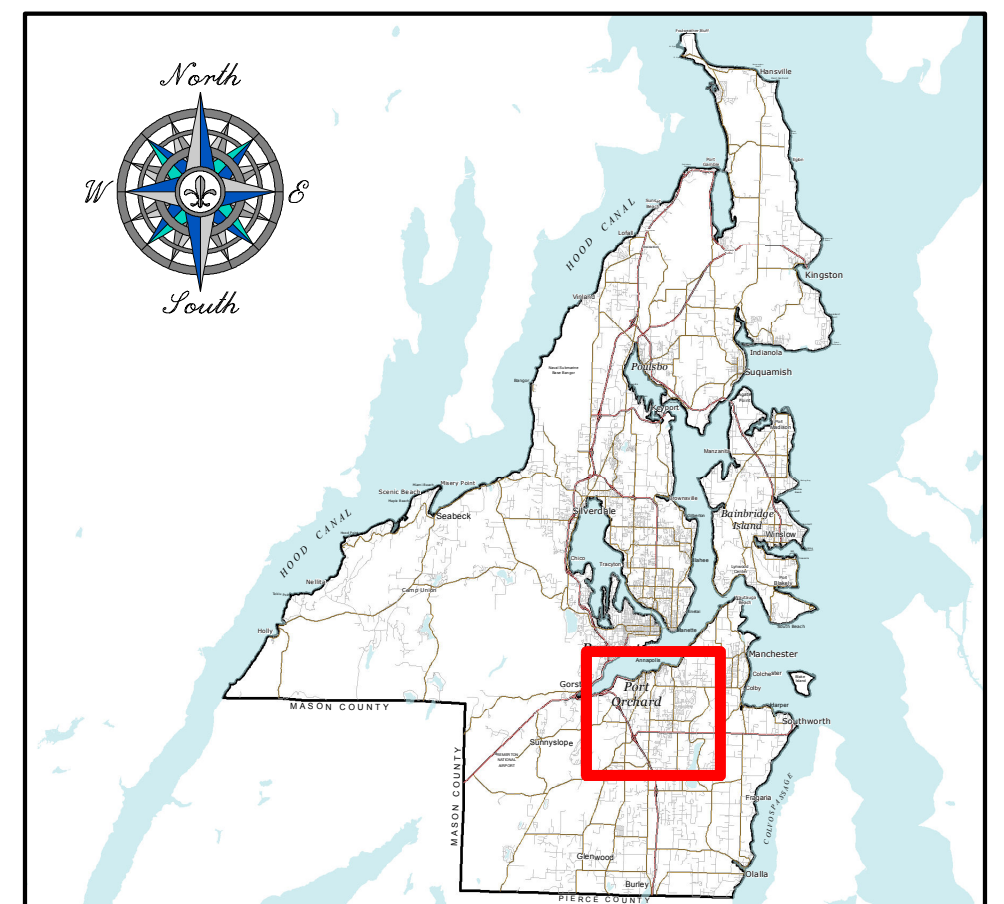
* THIS MAP IS NOT A SUBSTITUTE FOR FIELD SURVEY *

Kitsap County Code
Title 19 - Critical Areas Ordinance

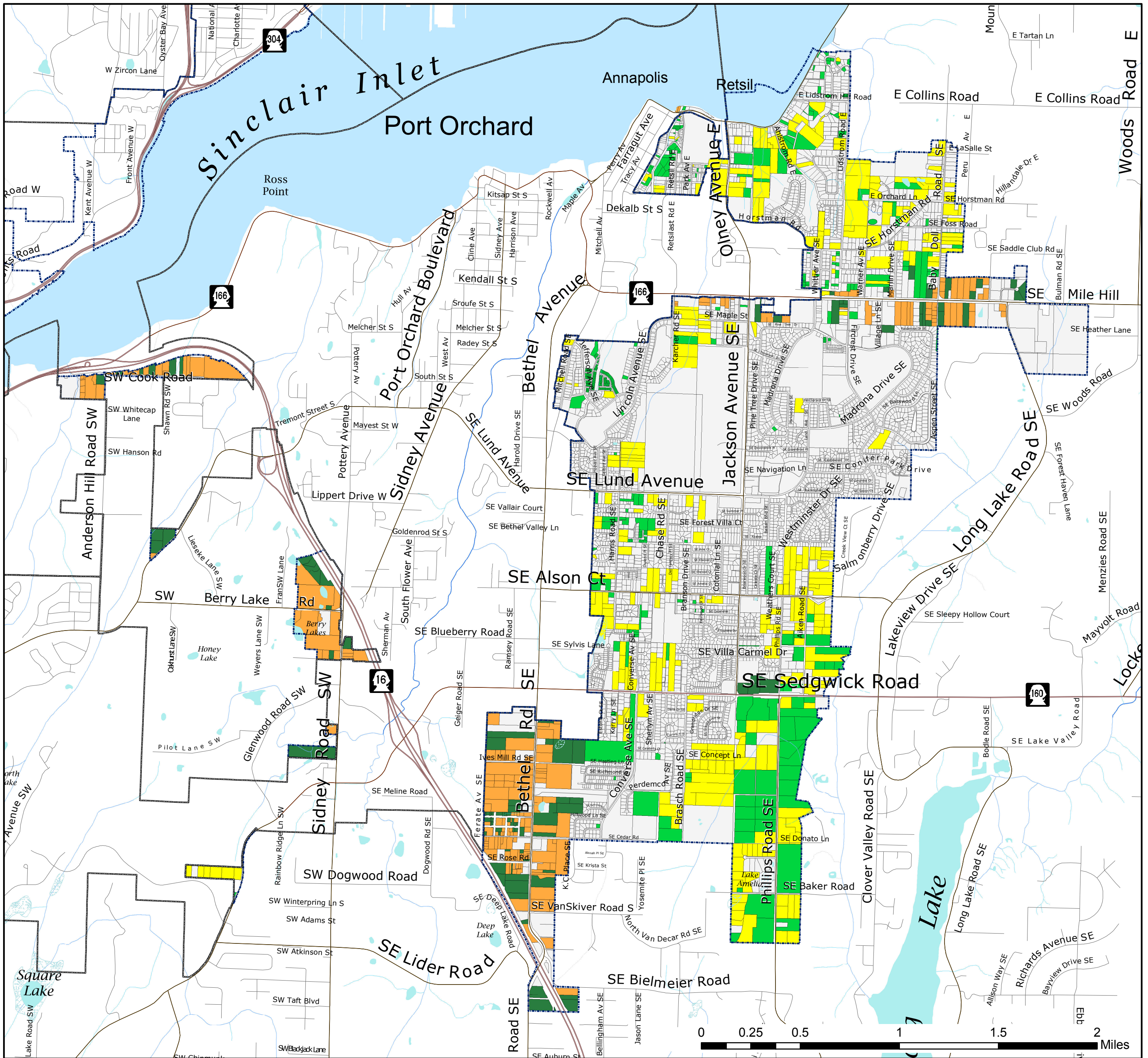
DRAFT

Map Date: October, 2013

Kitsap County Department of
Community Development
614 Division Street, MS-36
Port Orchard, Washington 98366
VOICE (360) 337-5777 * FAX (360) 337-4925



Port Orchard Urban Growth Area



<p>Developed/Exempt</p> <p>Parcels removed from Urban Land Supply described as follows: <i>Utilities/Transportation parcels</i> <i>Current Use/Common area parcels</i> <i>Parks/Recreation parcels</i> <i>Institutional parcels</i> <i>Governmental services</i></p> <p>Residential Land</p> <p>Underutilized</p> <p>Vacant Land</p> <p>Commercial Land</p> <p>Underutilized</p> <p>Vacant Land</p> <p>Urban Growth Area Boundary</p> <p>Incorporated City Boundary</p> <p>Tax Parcel Boundary</p>	<p>State Highway</p> <p>Major Road</p> <p>Collector / Arterial</p> <p>Local Access; Local Road</p> <p>WaterBody Cartographic Feature</p> <p>Bay, estuary, Puget Sound</p> <p>Lake, Pond or Reservoir</p> <p>Includes DNR, NWI and Surveyed Wetlands</p> <p>Fish Habitat Water Type</p> <p>Designated Shoreline of the State</p> <p>Fish Habitat</p> <p>Non-fish Habitat</p> <p>Unknown, unmodeled hydrographic feature.</p>
---	---

Land Capacity Analysis

This map was created from existing map sources, not from field surveys. While great care was taken in using the most current map sources available, no warranties of any sort, including accuracy, fitness, or merchantability accompany this product. The user of this map assumes responsibility for determining its suitability for its intended use.

* THIS MAP IS NOT A SUBSTITUTE FOR FIELD SURVEY *

Vacant and Underutilized parcels created from Land Capacity Analysis were done as part of the Kitsap County Buildable Lands Analysis report. This data represents analysis from parcel data as reflected on January 2, 2012. Continuing permit and development activity will alter the vacant and underutilized parcels results.

DRAFT

Map Date: September, 2013



Kitsap County Department of
 Community Development
 614 Division Street, MS-36
 Port Orchard, Washington 98366
 VOICE (360) 337-5777 * FAX (360) 337-4925

