

R2W

R1W

R1E

R2E

T 28 N

T 28 N

T 27 N

T 27 N

T 26 N

T 26 N

T 25 N

T 25 N

T 24 N

T 24 N

T 23 N

T 23 N

KITSAP COUNTY

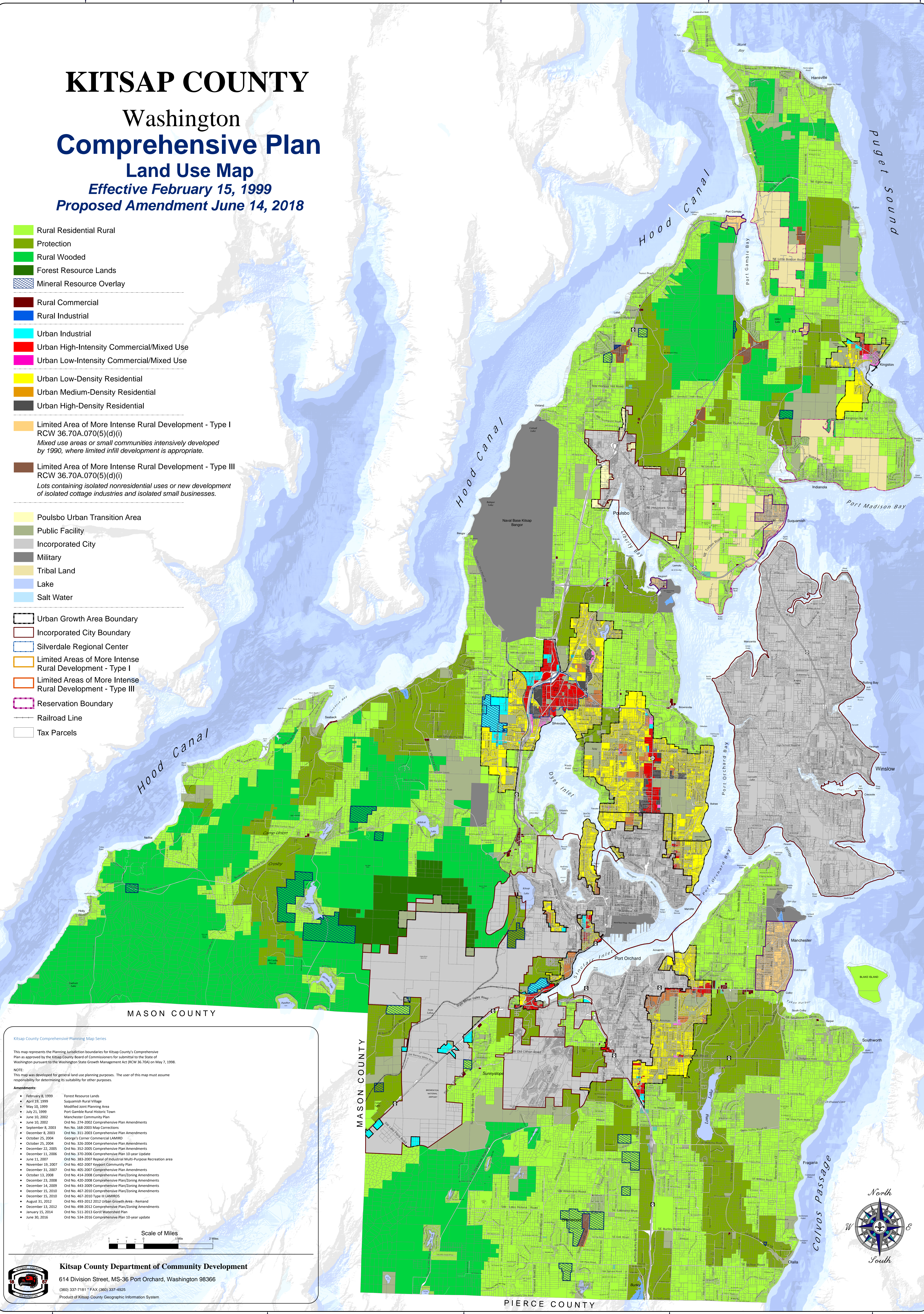
Washington

Comprehensive Plan

Land Use Map

Effective February 15, 1999
Proposed Amendment June 14, 2018

- Rural Residential Rural
- Protection
- Rural Wooded
- Forest Resource Lands
- Mineral Resource Overlay
- Rural Commercial
- Rural Industrial
- Urban Industrial
- Urban High-Intensity Commercial/Mixed Use
- Urban Low-Intensity Commercial/Mixed Use
- Urban Low-Density Residential
- Urban Medium-Density Residential
- Urban High-Density Residential
- Limited Area of More Intense Rural Development - Type I
RCW 36.70A.070(5)(d)(i)
Mixed use areas or small communities intensively developed by 1990, where limited infill development is appropriate.
- Limited Area of More Intense Rural Development - Type III
RCW 36.70A.070(5)(d)(i)
Lots containing isolated nonresidential uses or new development of isolated cottage industries and isolated small businesses.
- Poulsbo Urban Transition Area
- Public Facility
- Incorporated City
- Military
- Tribal Land
- Lake
- Salt Water
- Urban Growth Area Boundary
- Incorporated City Boundary
- Silverdale Regional Center
- Limited Areas of More Intense Rural Development - Type I
- Limited Areas of More Intense Rural Development - Type III
- Reservation Boundary
- Railroad Line
- Tax Parcels



MASON COUNTY

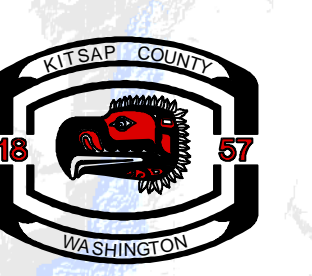
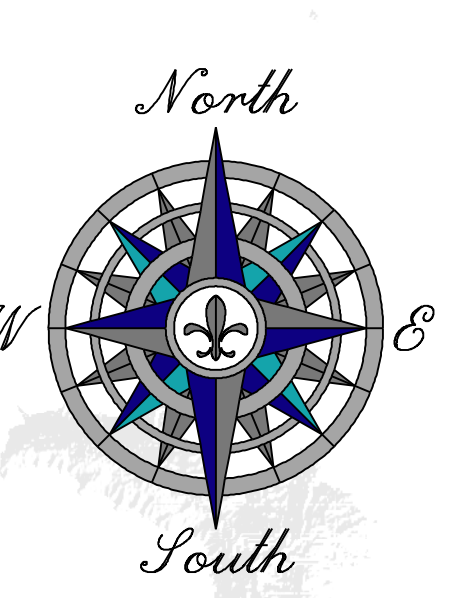
Kitsap County Comprehensive Planning Map Series

This map represents the Planning Jurisdiction boundaries for Kitsap County's Comprehensive Plan as approved by the Kitsap County Board of Commissioners for submission to the State of Washington pursuant to the Washington State Growth Management Act (RCW 36.70A) on May 7, 1998.

NOTE:
This map was developed for general land use planning purposes. The user of this map must assume responsibility for determining its suitability for other purposes.

Amendments:

• February 8, 1999	Forest Resource Lands
• April 15, 1999	Suquamish Rural Village
• May 10, 1999	Modified Joint Planning Area
• July 21, 1999	Port Gamble Rural Historic Town
• June 10, 2002	Manchester Community Plan
• June 10, 2002	Ord No. 274-2002 Comprehensive Plan Amendments
• September 8, 2003	Res No. 168-2003 Map Corrections
• December 8, 2003	Ord No. 311-2003 Comprehensive Plan Amendments
• October 25, 2004	George's Corner Commercial LAMRD
• October 25, 2004	Ord No. 325-2004 Comprehensive Plan Amendments
• December 22, 2005	Ord No. 352-2005 Comprehensive Plan Amendments
• December 12, 2006	Ord No. 370-2006 Comprehensive Plan 10-year Update
• June 11, 2007	Ord No. 383-2007 Repeal of Industrial Multi-Purpose Recreation area
• November 19, 2007	Ord No. 402-2007 Keyport Community Plan
• December 31, 2007	Ord No. 409-2007 Comprehensive Plan Amendments
• October 13, 2008	Ord No. 414-2008 Comprehensive Plan/Zoning Amendments
• December 23, 2008	Ord No. 420-2008 Comprehensive Plan/Zoning Amendments
• December 14, 2009	Ord No. 443-2009 Comprehensive Plan/Zoning Amendments
• December 15, 2010	Ord No. 467-2010 Comprehensive Plan/Zoning Amendments
• December 15, 2010	Ord No. 467-2010 Type III LAMRDs
• August 31, 2012	Ord No. 493-2012 2012 Urban Growth Area - Remand
• December 12, 2012	Ord No. 498-2012 Comprehensive Plan/Zoning Amendments
• January 15, 2014	Ord No. 511-2013 GORL Watershed Plan
• June 30, 2016	Ord No. 534-2016 Comprehensive Plan 10-year update



Kitsap County Department of Community Development
614 Division Street, MS-36 Port Orchard, Washington 98366
(360) 337-7181 * FAX (360) 337-4925
Product of Kitsap County Geographic Information System

Clarifying Edits - Exhibit A1