

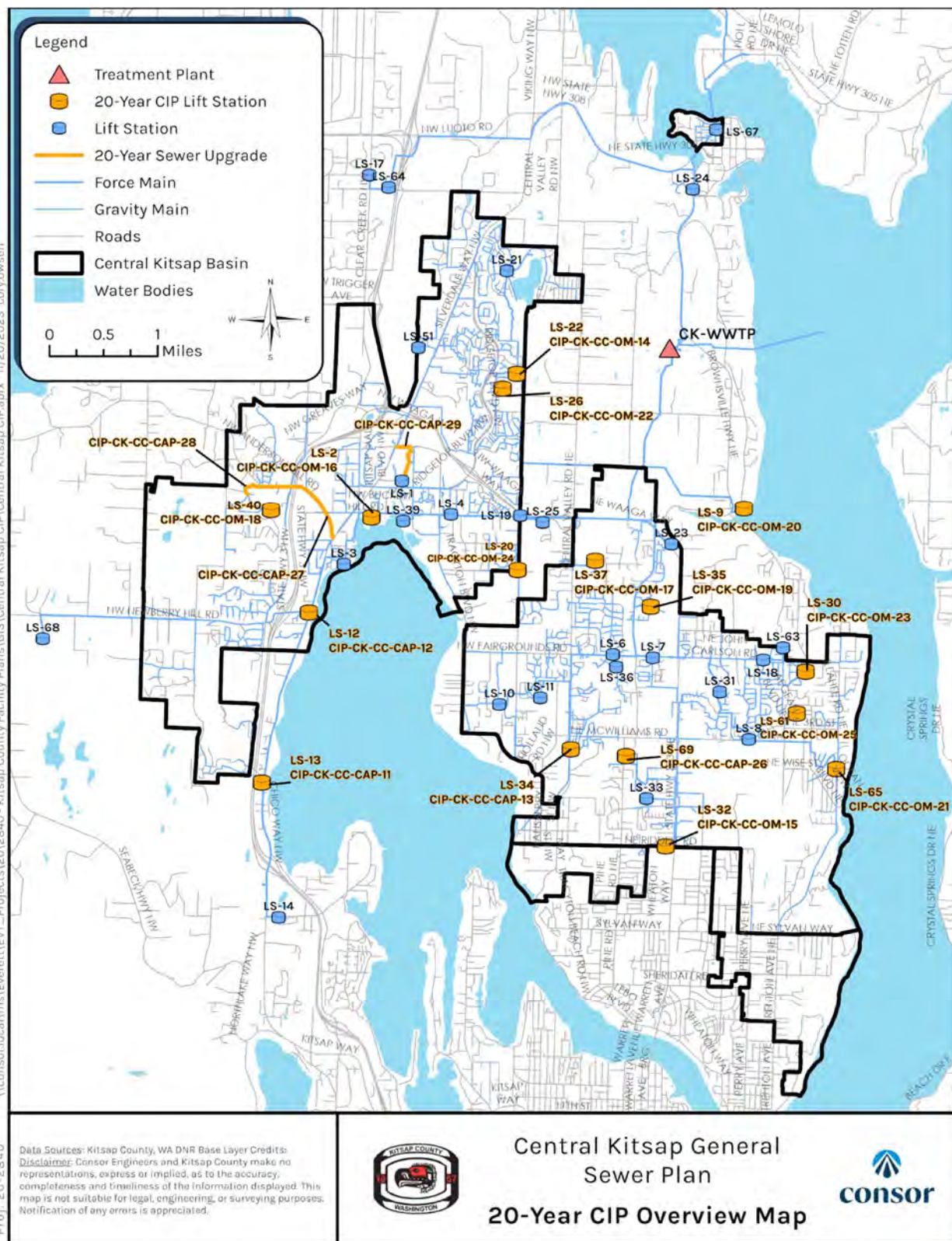
## Appendix A

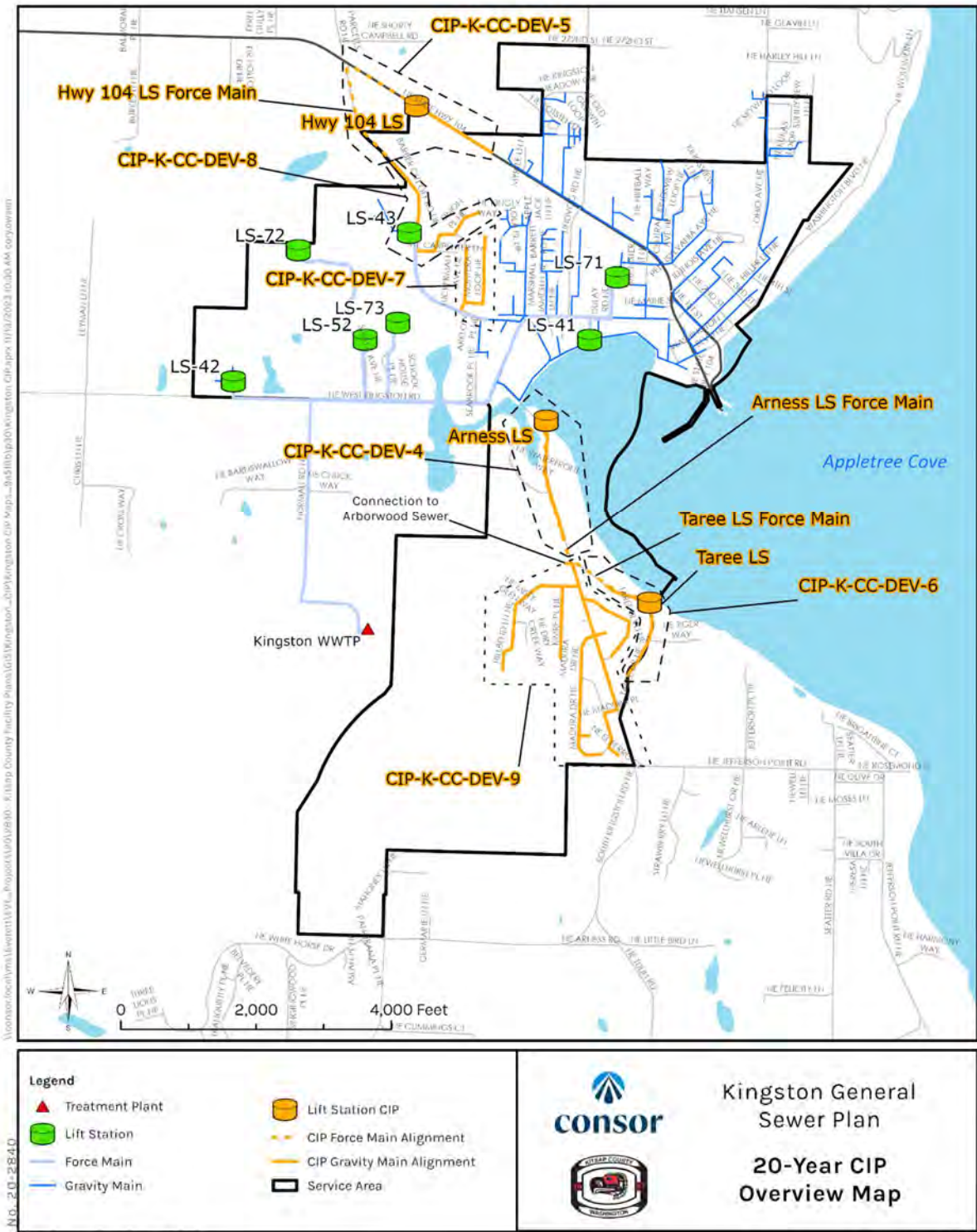
---

# SANITARY SEWER SYSTEM MAPS

- Central Kitsap General Sewer Plan
- Kingston General Sewer Plan
- Manchester Sewer Plan
- Port Orchard General Sewer Plan
- Poulsbo Sewer Plan
- Suquamish General Sewer Plan

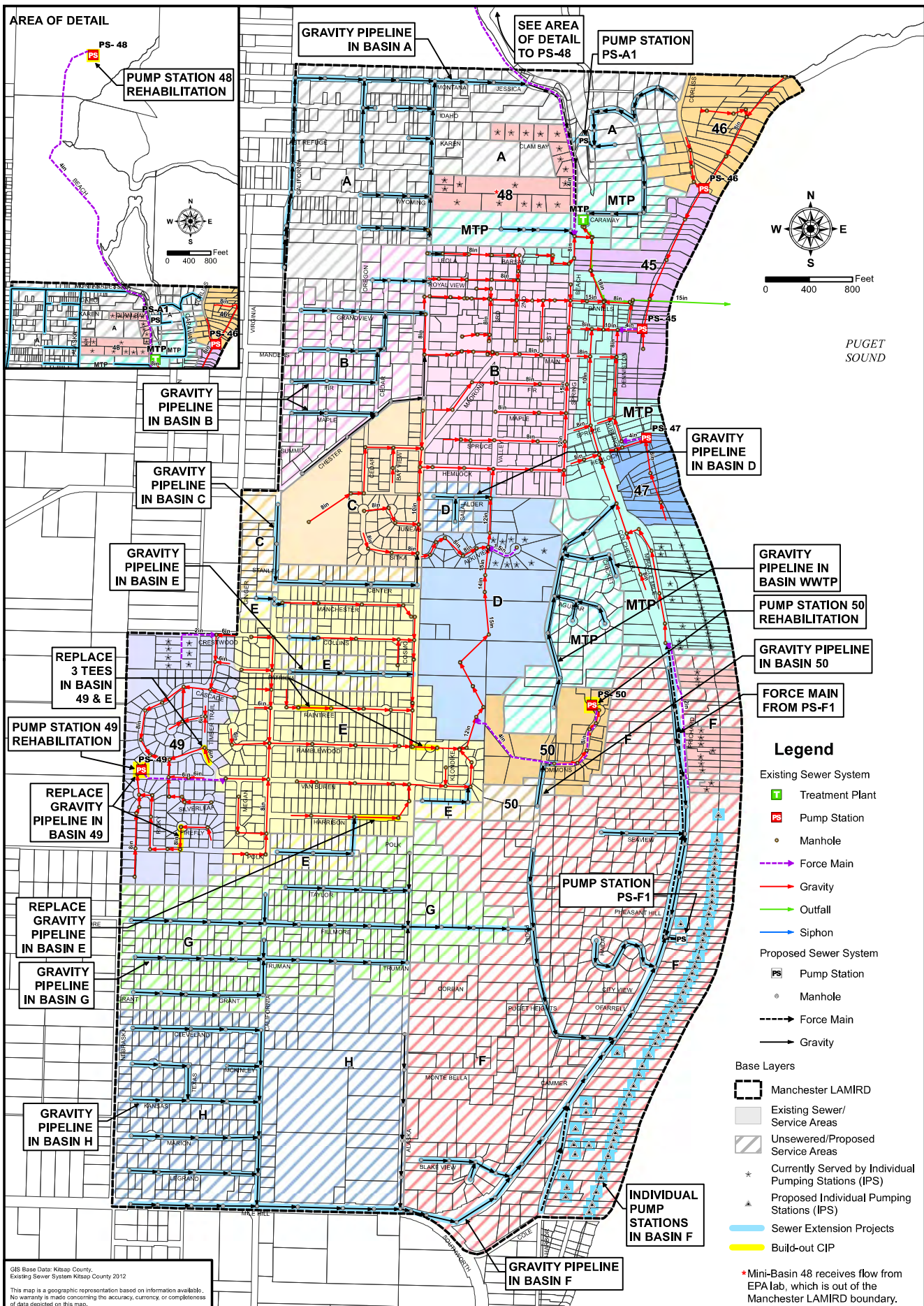
Figure 11-2 | 20-Year Collection and Conveyance CIP (2029-2048)





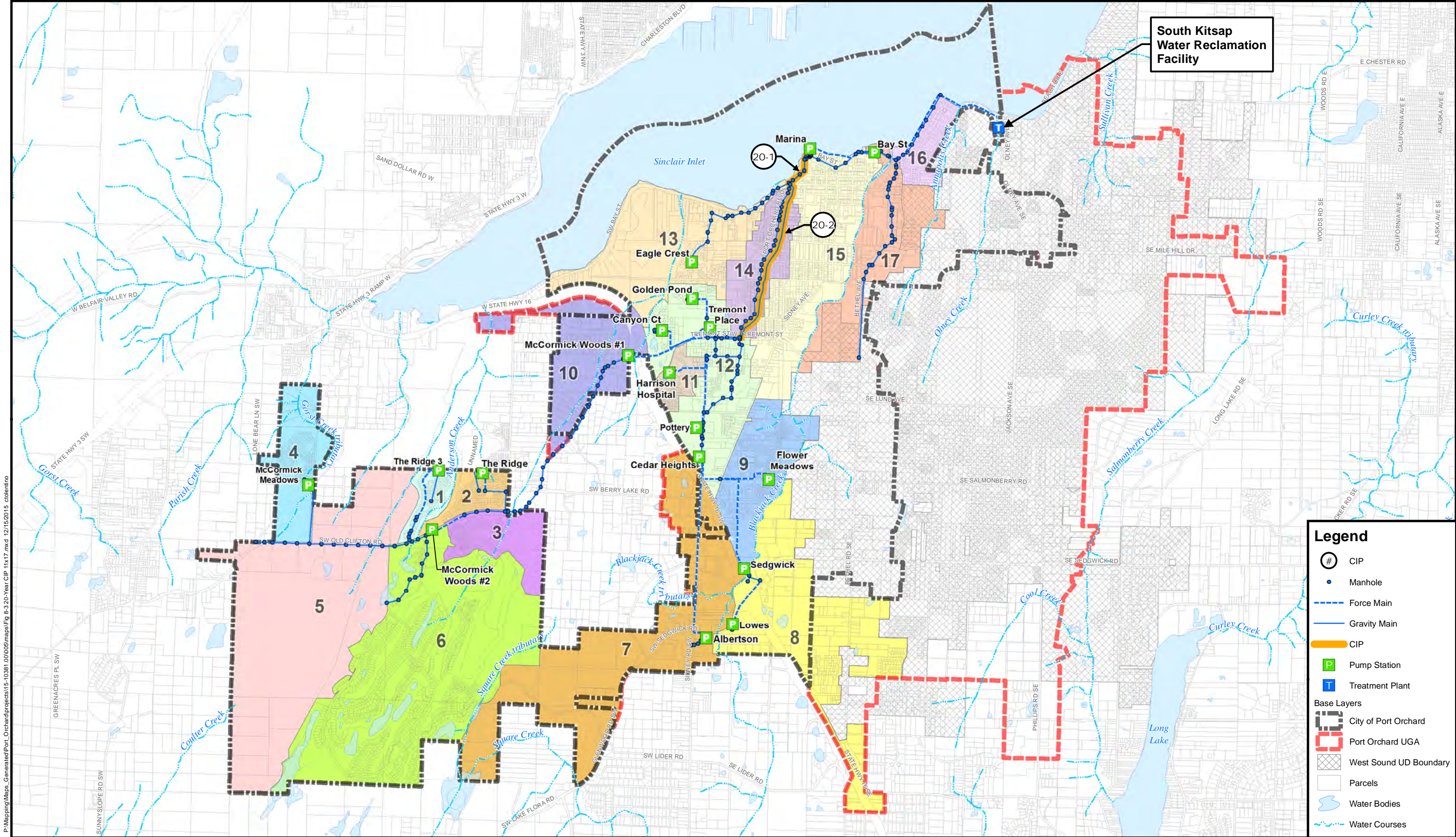
Project No. 20-2840  
 Data Sources: Kitsap County, WA DNR  
 Coordinate System: NAD 1983 StatePlane Washington North FIPS 4601 Feet  
 Disclaimer: Consor and Kitsap County make no representations, express or implied, as to the accuracy, completeness and timeliness of the information displayed. This map is not suitable for legal, engineering or surveying purposes. Notification of any errors is appreciated.  
 November 2023

Figure 11-2 | 20-year CIP Overview Map



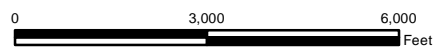
**BUILD-OUT CAPITAL IMPROVEMENT PROJECTS**  
**MANCHESTER SEWER FACILITIES STRATEGY PLAN**  
 Kitsap County  
 October 2014





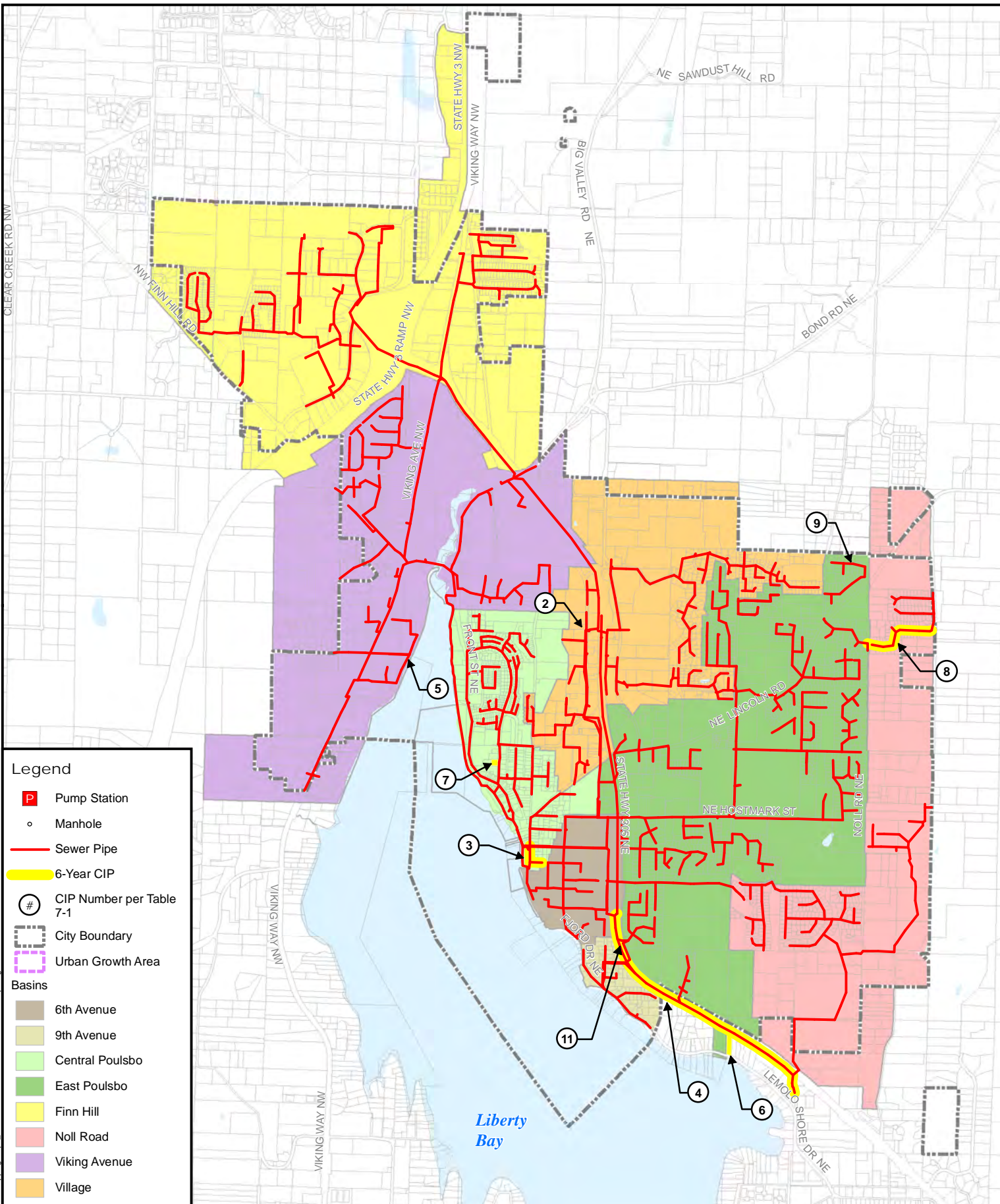
P:\Mapping\Maps\_Generated\Port\_Orchard\projects\15-10361\_00\05\maps\Fig 8-3 20-Year CIP 11x17.mxd 12/15/2015 c.rolentino

Sewer System: City of Port Orchard 2015  
 Kitsap County base data 2015  
 Data sources supplied may not reflect current or actual conditions. This map is a geographic representation based on information available. It does not represent survey data. No warranty is made concerning the accuracy, currency, or completeness of data depicted on this map.  
 BHC Consultants LLC., assumes no responsibility for the validity of any information presented herein, nor any responsibility for the use or misuse of the data.



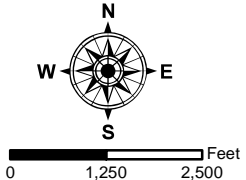
20-Year CIP  
 General Sewer Plan Update  
 City of Port Orchard, Washington





P:\Mapping\Maps\_Generated\Poulsbo\15-10397\_00004\maps\Fig 7-1 6-Yr CIP 8.5x11.mxd 8/12/2016 c:\otm\m

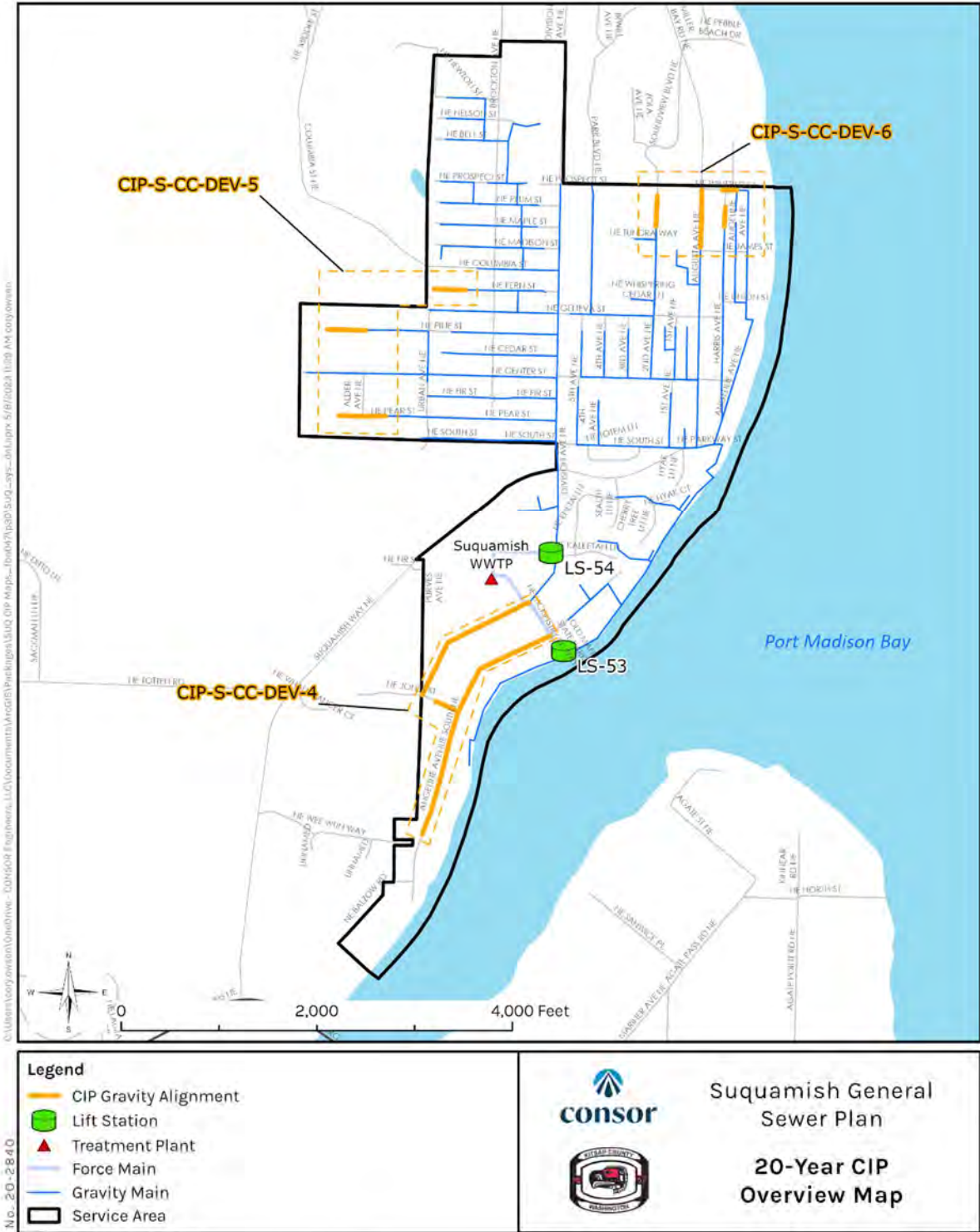
This map is a geographic representation based on available information. No warranty is made concerning the accuracy, currency, or completeness of data depicted on this map. Source: Kitsap County.



6-Year CIP  
 Comprehensive Sewer Plan  
 City of Poulsbo  
 August 2016

Figure  
 7-1

Figure 11-2 | 20-year CIP Overview Map



Project No. 20-2840  
Date Sources: Kitsap County, WA DNR.  
Coordinate System: NAD 1983 StatePlane Washington North FIPS 4601 Feet  
Disclaimer: ConSOR and Kitsap County make no representations, express or implied, as to the accuracy, completeness, and timeliness of the information displayed. This map is not suitable for engineering, or surveying purposes. Notification of any errors is appreciated.