

---

**Kitsap County  
Planning Commission**

**Open Space Application**

**Howard Traditional Farm 16 01470**

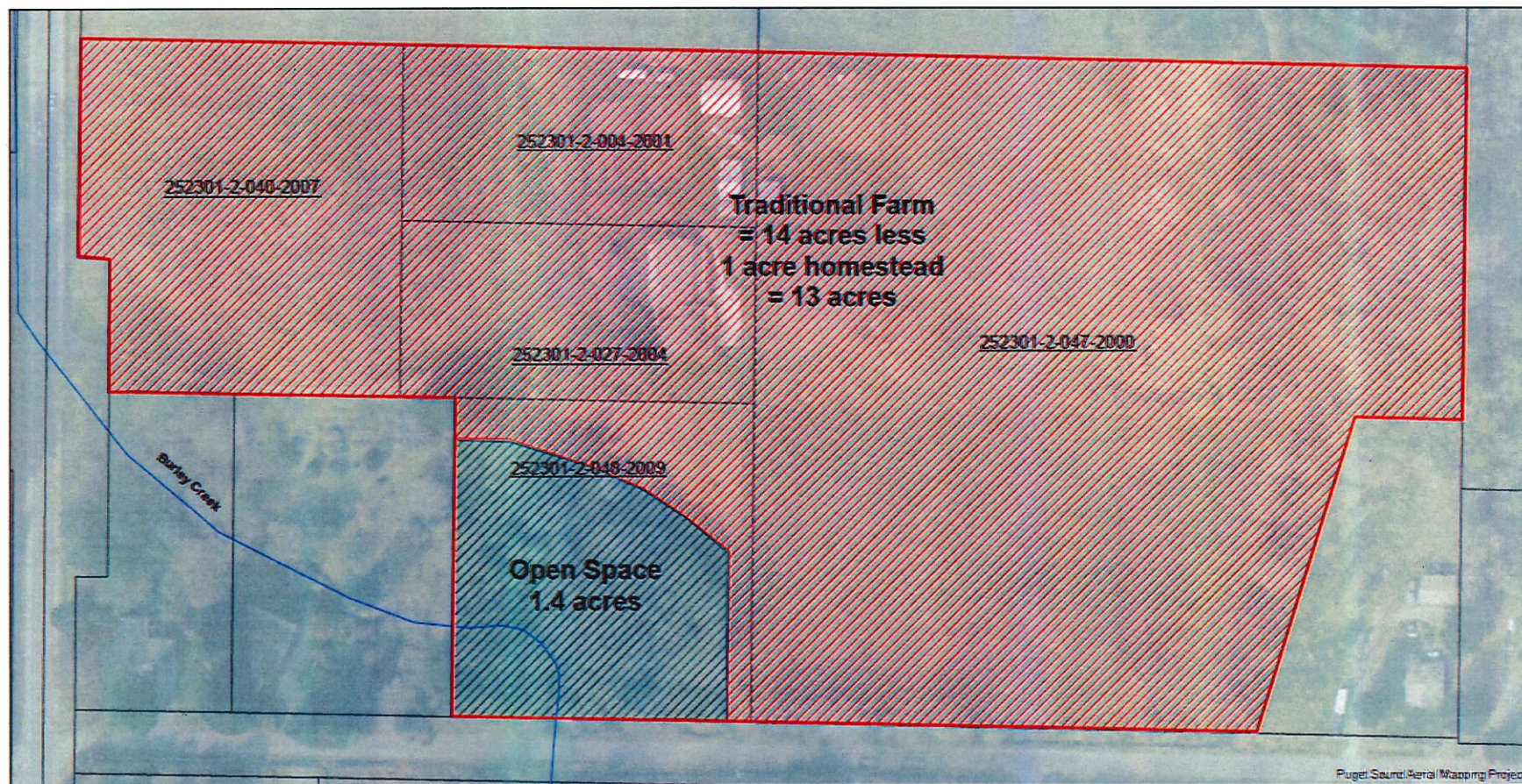
**April 4, 2017**



# Howard Open Space



## Howard Open Space



## Howard Open Space

### **High Priority Resources**

- Fish-Rearing Habitat Ponds and Primary Stream Buffers – Burley Creek
- Watershed: Burley Creek
- Farm & Agricultural Conservation Land

### **Medium Priority Resources**

- None

### **Low Priority Resources**

- Preservation of Visual Quality – Large farm on Bethel Burley Road SE

## Howard Open Space

Parcel Number	Current Tax (Ag Program)	With No Reduction All parcels fully taxable	With Reduction (proposed with this application)	Increase or (Decrease) to applicant in tax if application approved	Increase in tax to applicant if application is denied
252301-2-004-2001 Currently Classified as Ag	\$134	\$699	\$356	\$221	\$565
252301-2-027-2004 Currently Classified as Ag	\$4,065	\$4,091	\$4,068	\$3	\$26
252301-2-040-2007 Currently Classified as Ag	\$13	\$549	\$473	\$460	\$536
252301-2-047-2000 Currently Classified as Ag	\$52	\$1,104	\$442	\$390	\$1,052
252301-2-048-2009 (This property is not currently participating in Agricultural Program)	\$486.20	\$486.20	\$194.48	(\$291.72)	N/A property is already fully taxable
<b>Total</b>	<b>\$4,750.20</b>	<b>\$6,929.20</b>	<b>\$5,533.48</b>	<b>\$782.28</b>	<b>\$2,179</b>



**Howard Open Space**

---

**Total Tax Shift if Application is Approved  
\$1,395.72**

