

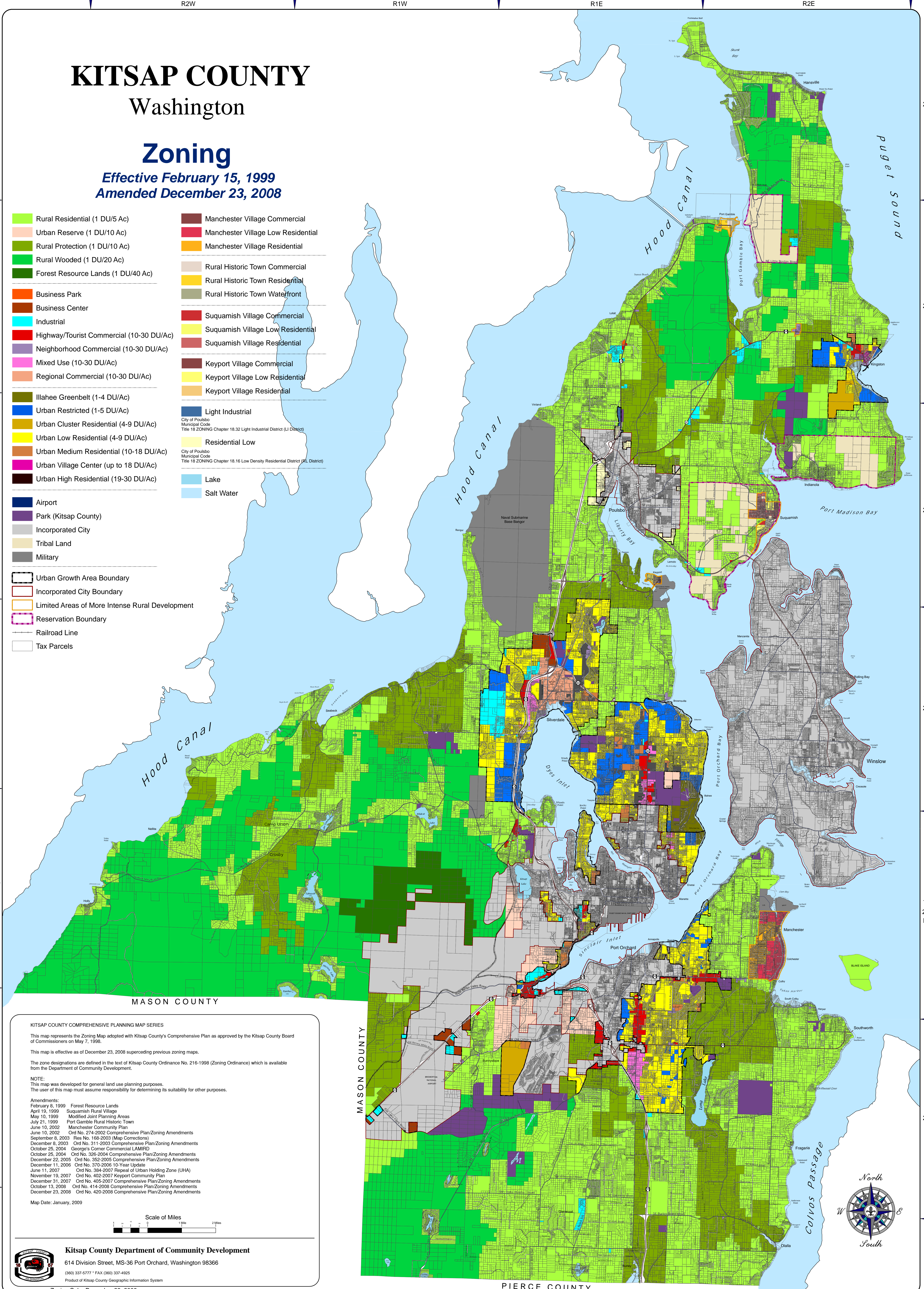
# KITSAP COUNTY

Washington

## Zoning

Effective February 15, 1999  
Amended December 23, 2008

- |   |                                    |
|---|------------------------------------|
| Rural Residential (1 DU/5 Ac)                   | Manchester Village Commercial      |
| Urban Reserve (1 DU/10 Ac)                      | Manchester Village Low Residential |
| Rural Protection (1 DU/10 Ac)                   | Manchester Village Residential     |
| Rural Wooded (1 DU/20 Ac)                       | Rural Historic Town Commercial     |
| Forest Resource Lands (1 DU/40 Ac)              | Rural Historic Town Residential    |
| Business Park                                   | Rural Historic Town Waterfront     |
| Business Center                                 | Suquamish Village Commercial       |
| Industrial                                      | Suquamish Village Low Residential  |
| Highway/Tourist Commercial (10-30 DU/Ac)        | Suquamish Village Residential      |
| Neighborhood Commercial (10-30 DU/Ac)           | Keyport Village Commercial         |
| Mixed Use (10-30 DU/Ac)                         | Keyport Village Low Residential    |
| Regional Commercial (10-30 DU/Ac)               | Keyport Village Residential        |
| Illahee Greenbelt (1-4 DU/Ac)                   | Light Industrial                   |
| Urban Restricted (1-5 DU/Ac)                    | Residential Low                    |
| Urban Cluster Residential (4-9 DU/Ac)           | Lake                               |
| Urban Low Residential (4-9 DU/Ac)               | Salt Water                         |
| Urban Medium Residential (10-18 DU/Ac)          |                                    |
| Urban Village Center (up to 18 DU/Ac)           |                                    |
| Urban High Residential (19-30 DU/Ac)            |                                    |
| Airport   |                                    |
| Park (Kitsap County)                            |                                    |
| Incorporated City                               |                                    |
| Tribal Land                                     |                                    |
| Military  |                                    |
| Urban Growth Area Boundary                      |                                    |
| Incorporated City Boundary                      |                                    |
| Limited Areas of More Intense Rural Development |                                    |
| Reservation Boundary                            |                                    |
| Railroad Line                                   |                                    |
| Tax Parcels                                     |                                    |



**KITSAP COUNTY COMPREHENSIVE PLANNING MAP SERIES**

This map represents the Zoning Map adopted with Kitsap County's Comprehensive Plan as approved by the Kitsap County Board of Commissioners on May 7, 1998.

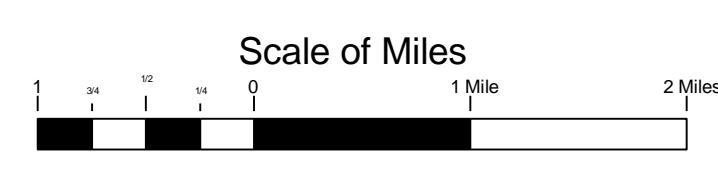
This map is effective as of December 23, 2008 superseding previous zoning maps.

The zone designations are defined in the text of Kitsap County Ordinance No. 216-1998 (Zoning Ordinance) which is available from the Department of Community Development.

**NOTE:**  
This map was developed for general land use planning purposes.  
The user of this map must assume responsibility for determining its suitability for other purposes.

**Amendments:**  
February 9, 1999 Forest Resource Lands  
April 19, 1999 Suquamish Rural Village  
May 10, 1999 Modified Joint Planning Areas  
July 21, 1999 Port Gamble Rural Historic Town  
June 10, 2002 Manchester Community Plan  
June 10, 2002 Ord No. 274-2002 Comprehensive Plan/Zoning Amendments  
September 8, 2003 Res No. 188-2003 (Map Corrections)  
December 8, 2003 Ord No. 311-2003 Comprehensive Plan/Zoning Amendments  
October 25, 2004 George's Corner Commercial LAMIRD  
October 25, 2004 Ord No. 326-2004 Comprehensive Plan/Zoning Amendments  
December 22, 2005 Ord No. 352-2005 Comprehensive Plan/Zoning Amendments  
December 11, 2006 Ord No. 370-2006 10-Year Update  
June 11, 2007 Ord No. 384-2007 Repeal of Urban Holding Zone (UHA)  
November 19, 2007 Ord No. 402-2007 Keyport Community Plan  
December 31, 2007 Ord No. 405-2007 Comprehensive Plan/Zoning Amendments  
October 13, 2008 Ord No. 414-2008 Comprehensive Plan/Zoning Amendments  
December 23, 2008 Ord No. 420-2008 Comprehensive Plan/Zoning Amendments

Map Date: January, 2009



**Kitsap County Department of Community Development**  
614 Division Street, MS-36 Port Orchard, Washington 98366  
(360) 337-5777 \* FAX (360) 337-4925  
Product of Kitsap County Geographic Information System

