

Kitsap County Washington

Zoning Map

Effective February 15, 1999
Amended June 10, 2002

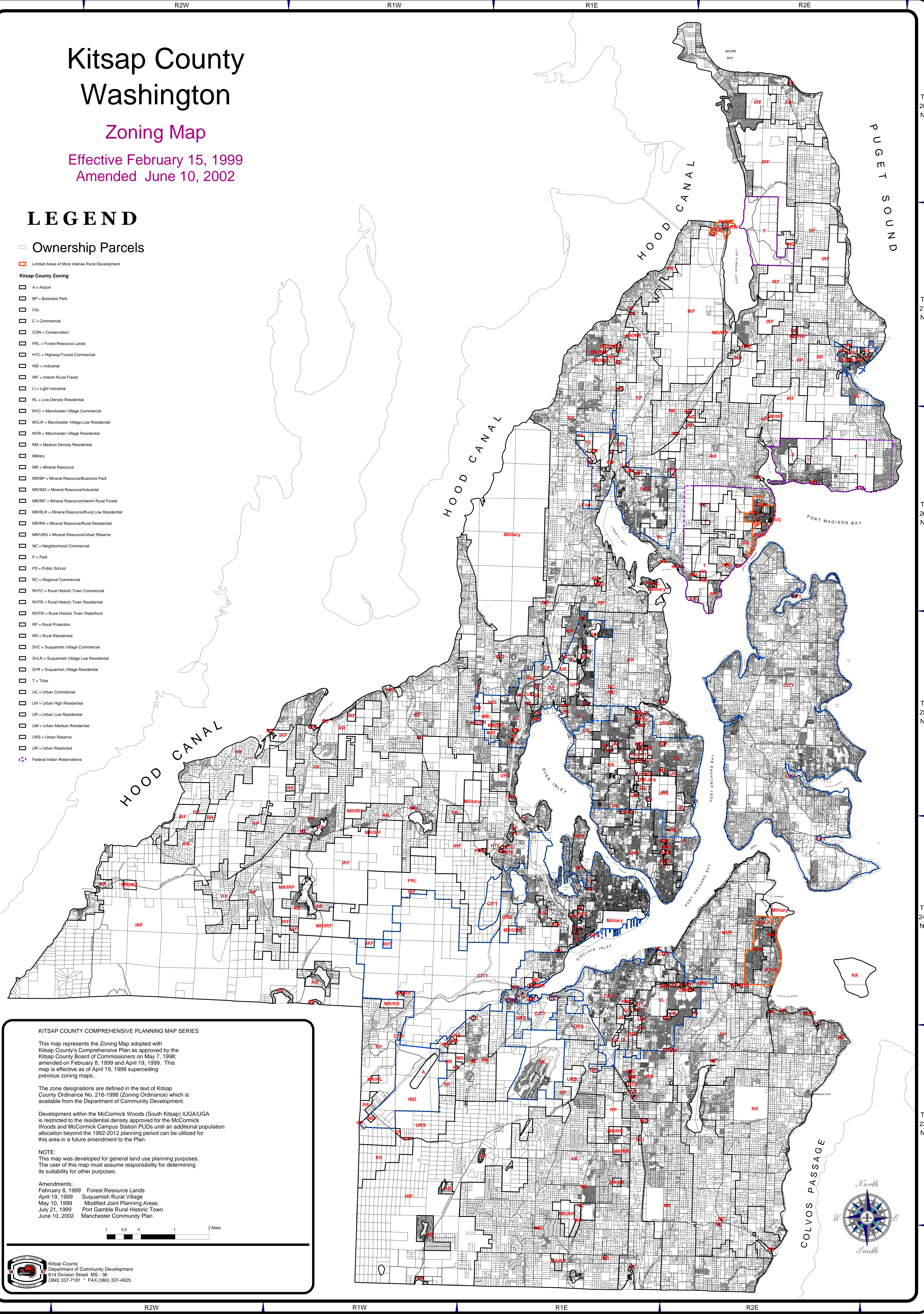
LEGEND

Ownership Parcels

Limited Areas of More Intense Rural Development

Kitsap County Zoning

- A = Airport
- BP = Business Park
- City
- C = Commercial
- CON = Conservation
- FRL = Forest Resource Lands
- HTC = Highway/Tourist Commercial
- IND = Industrial
- IRF = Interim Rural Forest
- LI = Light Industrial
- RL = Low Density Residential
- MVC = Manchester Village Commercial
- MVL = Manchester Village Low Residential
- MVR = Manchester Village Residential
- RM = Medium Density Residential
- Military
- MR = Mineral Resource
- MRBP = Mineral Resource/Business Park
- MRIND = Mineral Resource/Industrial
- MRIRF = Mineral Resource/Interim Rural Forest
- MRRLR = Mineral Resource/Rural Low Residential
- MRRLR = Mineral Resource/Rural Residential
- MRURS = Mineral Resource/Urban Reserve
- NC = Neighborhood Commercial
- P = Park
- PS = Public School
- RC = Regional Commercial
- RHTC = Rural Historic Town Commercial
- RHTR = Rural Historic Town Residential
- RHTW = Rural Historic Town Waterfront
- RP = Rural Protection
- RR = Rural Residential
- SVC = Suquamish Village Commercial
- SVLR = Suquamish Village Low Residential
- SVR = Suquamish Village Residential
- T = Tribe
- UC = Urban Commercial
- UH = Urban High Residential
- UR = Urban Low Residential
- UM = Urban Medium Residential
- URS = Urban Reserve
- UR = Urban Restricted
- Federal Indian Reservations



KITSAP COUNTY COMPREHENSIVE PLANNING MAP SERIES

This map represents the Zoning Map adopted with Kitsap County's Comprehensive Plan as approved by the Kitsap County Board of Commissioners on May 7, 1998; amended on February 8, 1999 and April 19, 1999. This map is effective as of April 19, 1999 superseding previous zoning maps.

The zone designations are defined in the text of Kitsap County Ordinance No. 216-1998 (Zoning Ordinance) which is available from the Department of Community Development.

Development within the McCormick Woods (South Kitsap) IUGA/UGA is restricted to the residential density approved for the McCormick Woods and McCormick Campus Station PUDs until an additional population allocation beyond the 1992-2012 planning period can be utilized for this area in a future amendment to the Plan.

NOTE:
This map was developed for general land use planning purposes. The user of this map must assume responsibility for determining its suitability for other purposes.

Amendments:
February 8, 1999 Forest Resource Lands
April 19, 1999 Suquamish Rural Village
May 10, 1999 Modified Joint Planning Areas
July 21, 1999 Port Gamble Rural Historic Town
June 10, 2002 Manchester Community Plan

