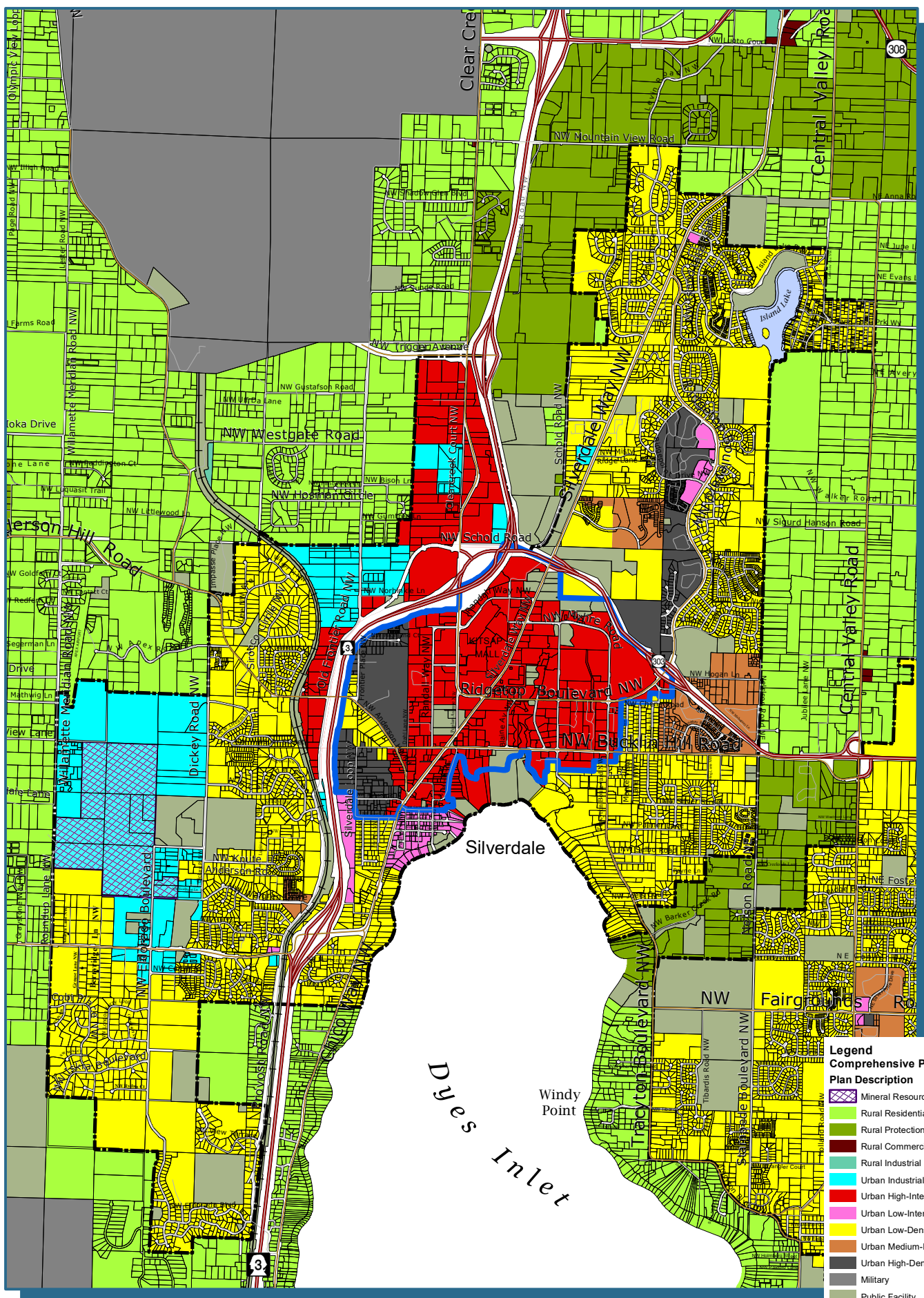




Silverdale Urban Growth Area Comprehensive Plan Designation



Legend

Comprehensive Plan Designations

Plan Description	Color/Pattern
Mineral Resource Overlay	Blue hatched pattern
Rural Residential	Light Green
Rural Protection	Medium Green
Rural Commercial	Dark Green
Rural Industrial	Teal
Urban Industrial	Yellow
Urban High-Intensity Commercial/Mixed Use	Orange
Urban Low-Intensity Commercial/Mixed Use	Light Orange
Urban Low-Density Residential	Light Yellow
Urban Medium-Density Residential	Medium Yellow
Urban High-Density Residential	Dark Yellow
Military	Grey
Public Facility	Light Blue
Lake	Blue

Unincorporated Urban Growth Area	Black outline
Regional Growth Center	Blue outline
Tax Parcels (Full Ownership)	Thin black outline



Kitsap County Department of Community Development
 614 Division Street, MS-36, Port Orchard, Washington 98366
 VOICE (360) 337-5777 (Kitsap One) * <https://www.kitsapgov.com/>

This map was created from existing map sources, not from field surveys. Determination of fitness for use lies with the user, as does the responsibility for understanding the accuracy and limitations of this map and data.

The information on this map may have been collected from various sources and can change over time without notice.

While great care was taken in making this map, there is no guarantee or warranty of its accuracy as to labeling, placement or location of any geographic features present. This map is intended for informational purposes only and is not a substitute for a field survey.

Kitsap County and its officials and employees assume no responsibility or legal liability for the accuracy, completeness, reliability, or timeliness of any information on this map.

Ord No. 587-2020 Comprehensive Plan Amendment

Map Published Date: April 29, 2020