

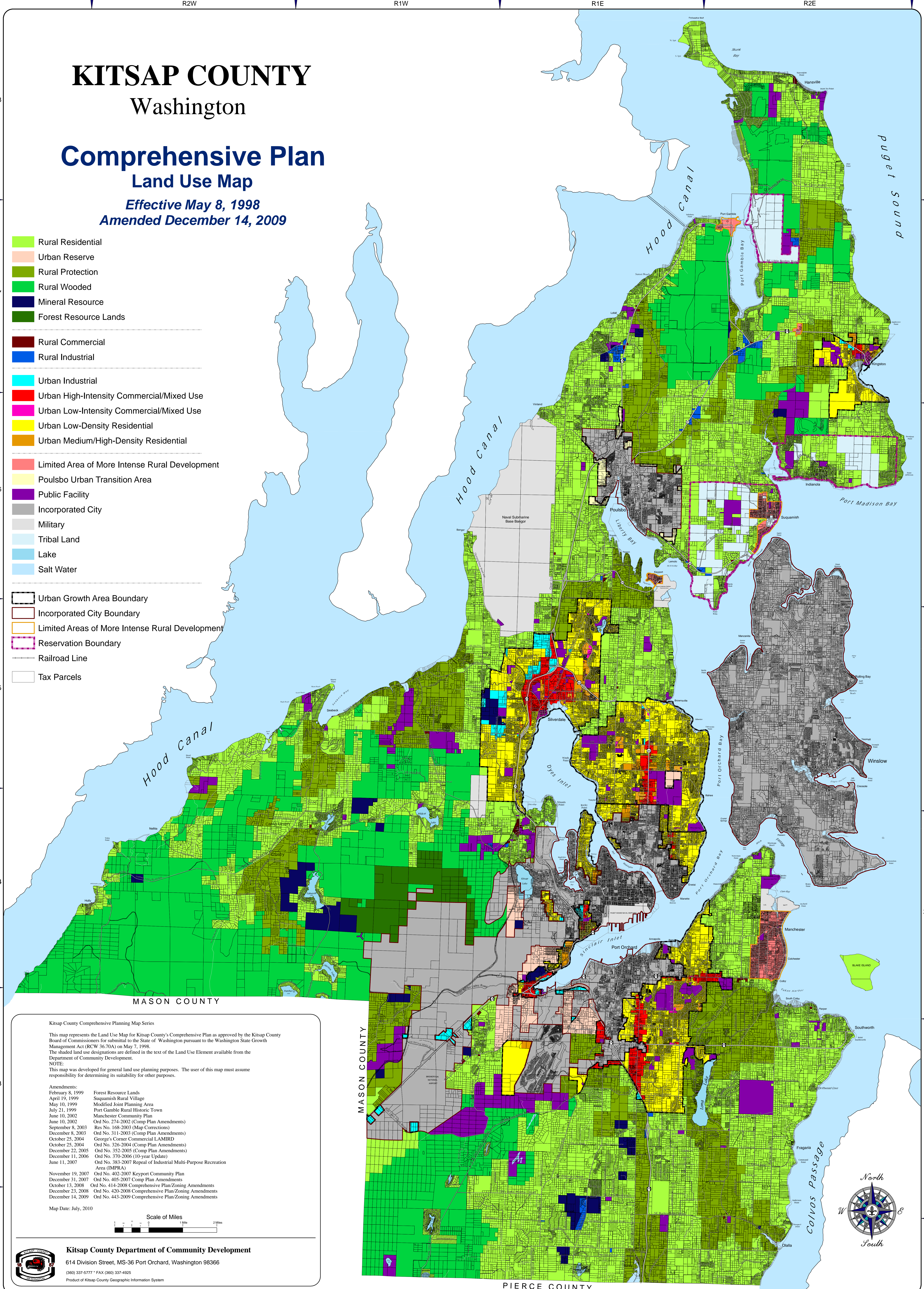
KITSAP COUNTY

Washington

Comprehensive Plan Land Use Map

Effective May 8, 1998
Amended December 14, 2009

- Rural Residential
- Urban Reserve
- Rural Protection
- Rural Wooded
- Mineral Resource
- Forest Resource Lands
- Rural Commercial
- Rural Industrial
- Urban Industrial
- Urban High-Intensity Commercial/Mixed Use
- Urban Low-Intensity Commercial/Mixed Use
- Urban Low-Density Residential
- Urban Medium/High-Density Residential
- Limited Area of More Intense Rural Development
- Poulsbo Urban Transition Area
- Public Facility
- Incorporated City
- Military
- Tribal Land
- Lake
- Salt Water
- Urban Growth Area Boundary
- Incorporated City Boundary
- Limited Areas of More Intense Rural Development
- Reservation Boundary
- Railroad Line
- Tax Parcels



Kitsap County Comprehensive Planning Map Series

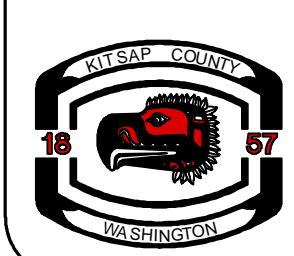
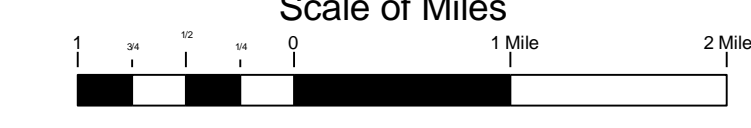
This map represents the Land Use Map for Kitsap County's Comprehensive Plan as approved by the Kitsap County Board of Commissioners for submittal to the State of Washington pursuant to the Washington State Growth Management Act (RCW 36.70A) on May 7, 1998. The shaded land use designations are defined in the text of the Land Use Element available from the Department of Community Development.

NOTE: This map was developed for general land use planning purposes. The user of this map must assume responsibility for determining its suitability for other purposes.

Amendments:

February 8, 1999	Forest Resource Lands
April 19, 1999	Squamish Rural Village
May 10, 1999	Modified Joint Planning Area
July 21, 1999	Port Gamble Rural Historic Town
June 10, 2002	Manchester Community Plan
June 10, 2002	Ord No. 274-2002 (Comp Plan Amendments)
September 8, 2003	Res No. 168-2003 (Map Corrections)
December 8, 2003	Ord No. 311-2003 (Comp Plan Amendments)
October 25, 2004	George's Corner Commercial LAMIRD
October 25, 2004	Ord No. 326-2004 (Comp Plan Amendments)
December 22, 2005	Ord No. 352-2005 (Comp Plan Amendments)
December 11, 2006	Ord No. 370-2006 (10-year Update)
June 11, 2007	Ord No. 383-2007 Repeal of Industrial Multi-Purpose Recreation Area (IMPRA)
November 19, 2007	Ord No. 402-2007 Keyport Community Plan
December 31, 2007	Ord No. 405-2007 Comp Plan Amendments
October 13, 2008	Ord No. 414-2008 Comprehensive Plan/Zoning Amendments
December 23, 2008	Ord No. 420-2008 Comprehensive Plan/Zoning Amendments
December 14, 2009	Ord No. 443-2009 Comprehensive Plan/Zoning Amendments

Map Date: July, 2010



Kitsap County Department of Community Development
614 Division Street, MS-36 Port Orchard, Washington 98366
(360) 337-5777 * FAX (360) 337-4925
Product of Kitsap County Geographic Information System

