

This map was created from existing map sources, not from field surveys. Determination of fitness for use lies with the user, as does the responsibility for understanding the accuracy and limitations of this map and data.

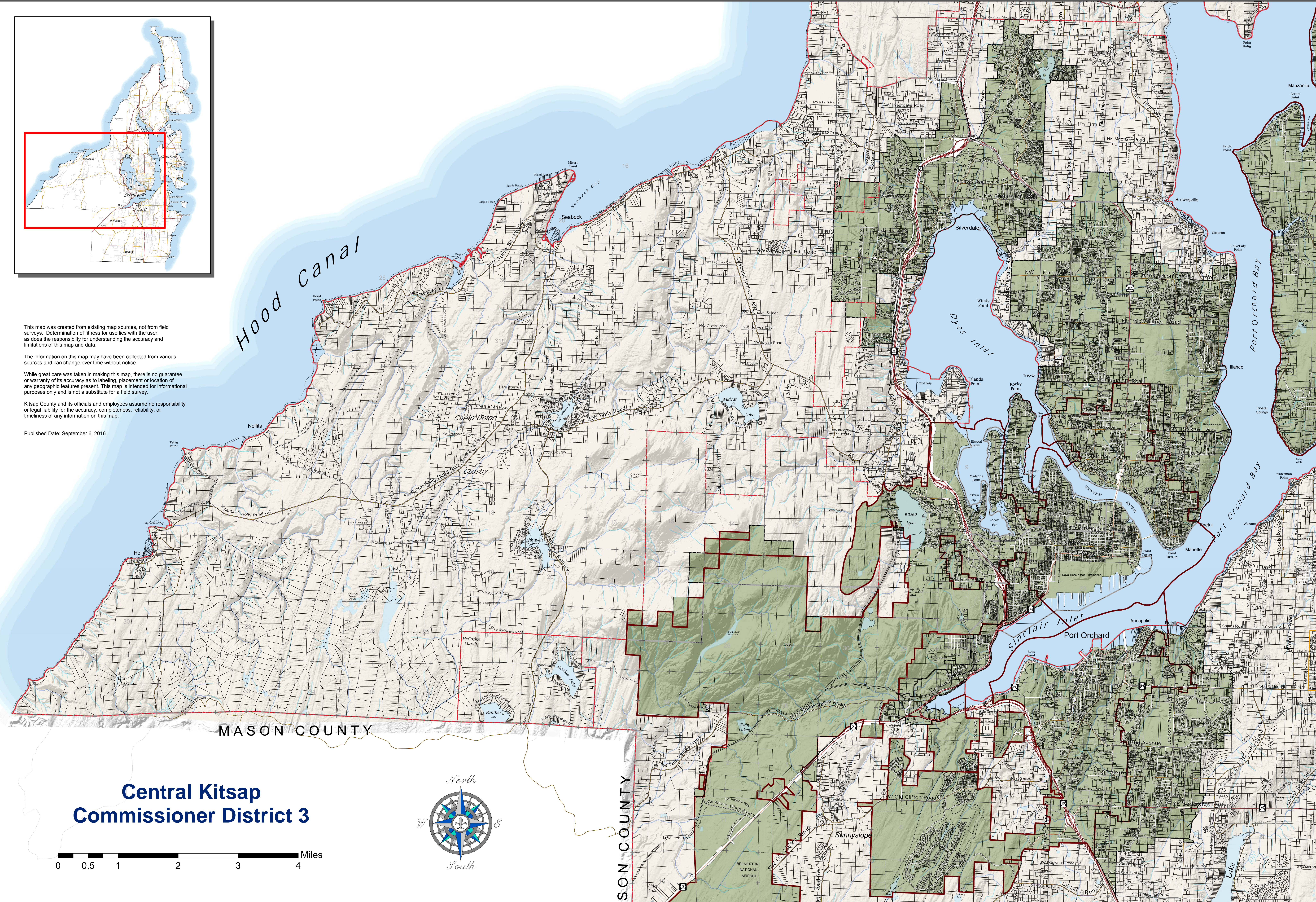
The information on this map may have been collected from various sources and can change over time without notice.

While great care was taken in making this map, there is no guarantee or warranty of its accuracy as to labeling, placement or location of any geographic features present. This map is intended for informational purposes only and is not a substitute for a field survey.

Kitsap County and its officials and employees assume no responsibility or legal liability for the accuracy, completeness, reliability, or timeliness of any information on this map.

Published Date: September 6, 2016

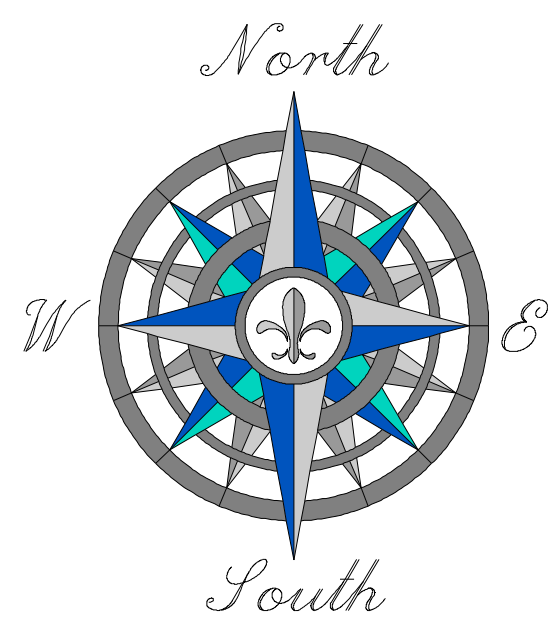
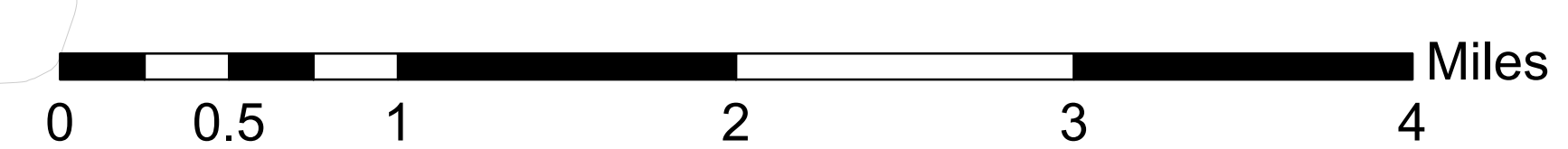
Hood Canal



MASON COUNTY

SON COUNTY

Central Kitsap Commissioner District 3



Outdoor Burning <ul style="list-style-type: none"> Land Clearing Burning Prohibited Residential and Land Clearing Burning Prohibited 	Limited Areas of More Intense Rural Development <ul style="list-style-type: none"> Type I Limited Area of More Intense Rural Development - Type I RCW 36.70A.070(5)(d)(i) Mixed use areas or small communities intensively developed by 1990, where limited rural development is appropriate. Major Road Collector / Arterial Local Access; Local Road Railroad Lines 	Watercourses (defined in WAC 222-16-030) Fish Habitat Water Type Code <ul style="list-style-type: none"> (S) Designated Shoreline of the State (F) Fish Habitat (N) Non-fish Habitat (U) Unknown, unmodeled hydrographic feature. Lake, Pond, Reservoir, Gravel pit or quarry filled with water
<ul style="list-style-type: none"> Urban Growth Area Boundary Incorporated City Boundary Fire District Outlines County Commissioner District Outlines PLSS Section Township Range Tax Parcels 		

Areas Where Outdoor Burning is Prohibited by Clean Air Agency

Alternatives to outdoor burning is available from:
 Kitsap County Public Works Solid Waste at (360) 337-5777 or (800) 825-4940
 Puget Sound Clean Air Agency at (800) 552-3565 or www.pscleanair.org



Kitsap County joined King, Pierce and Snohomish Counties in a total outdoor burn ban in the urbanized areas. After January 1, 2001, outdoor burning in urban areas was restricted to small recreational or cooking fires and barbecues.

State law mandates that the outdoor burn ban will apply inside incorporated cities (Bainbridge Island, Bremerton, Port Orchard, and Poulsbo) and inside all Urban Growth Area boundaries (including Silverdale and Kingston). Some additional no-burn areas have been established by state law, where reasonable alternatives to burning are available.

Effective Sept. 1, 2009, land-clearing burning will no longer be allowed in Kitsap County.

This permanent ban, brought about by the Puget Sound Clean Air Agency, was adopted by the Agency's Board of Directors on April 23, 2009, following a public workshop, public comment period and public hearing. Prior to this action, land-clearing fires were prohibited only in the urbanized areas of Kitsap County.

The Clean Air Agency Board took similar action last February 2008 by adopting a permanent ban on land-clearing burning in King, Pierce and Snohomish counties which became effective July 1, 2008.