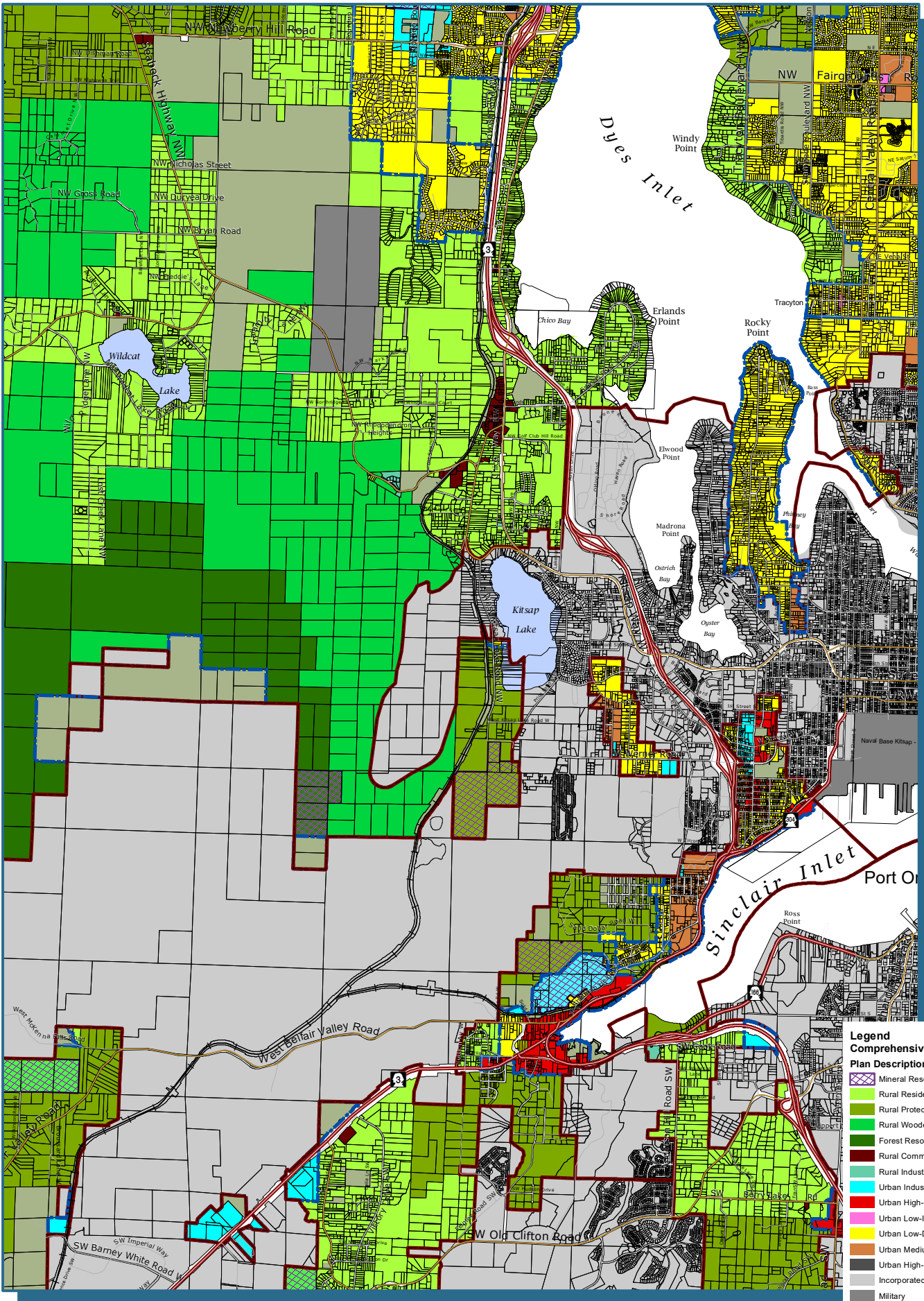


Bremerton West Urban Growth Area Comprehensive Plan Designation



Legend
Comprehensive Plan Designations

Plan Description	Symbol/Color
Mineral Resource Overlay	Blue hatched pattern
Rural Residential	Light Green
Rural Protection	Medium Green
Rural Wooded	Dark Green
Forest Resource Lands	Dark Green with diagonal lines
Rural Commercial	Dark Green with horizontal lines
Rural Industrial	Light Blue
Urban Industrial	Light Green with diagonal lines
Urban High-Intensity Commercial/Mixed Use	Red
Urban Low-Intensity Commercial/Mixed Use	Pink
Urban Low-Density Residential	Yellow
Urban Medium-Density Residential	Orange
Urban High-Density Residential	Dark Orange
Incorporated City	Grey outline
Military	Dark Grey outline
Public Facility	Light Grey outline
Lake	Blue
Unincorporated Urban Growth Area	Red outline
Incorporated City	Black outline



Kitsap County Department of Community Development
614 Division Street, MS-36, Port Orchard, Washington 98366
VOICE (360) 337-5777 (Kitsap One) * <https://www.kitsapgov.com/>

This map was created from existing map sources, not from field surveys. Determination of fitness for use lies with the user, as does the responsibility for understanding the accuracy and limitations of this map and data.
The information on this map may have been collected from various sources and can change over time without notice.
While great care was taken in making this map, there is no guarantee or warranty of its accuracy as to labeling, placement or location of any geographic features presented. This map is intended for informational purposes only and is not a substitute for a field survey.
Kitsap County and its officials and employees assume no responsibility or legal liability for the accuracy, completeness, reliability or timeliness of any information on this map.
Ord. No. 587-2020 Comprehensive Plan Amendment
Map Published Date: April 27, 2020