

# Port Gamble Forest Heritage Park--New Land Acquisition 2017

PORT GAMBLE, December 22, 2017 – On Friday afternoon, a transaction was completed to secure more than 1,500 acres of the Port Gamble Forest from Pope Resources to add to the Port Gamble Forest Heritage Park.

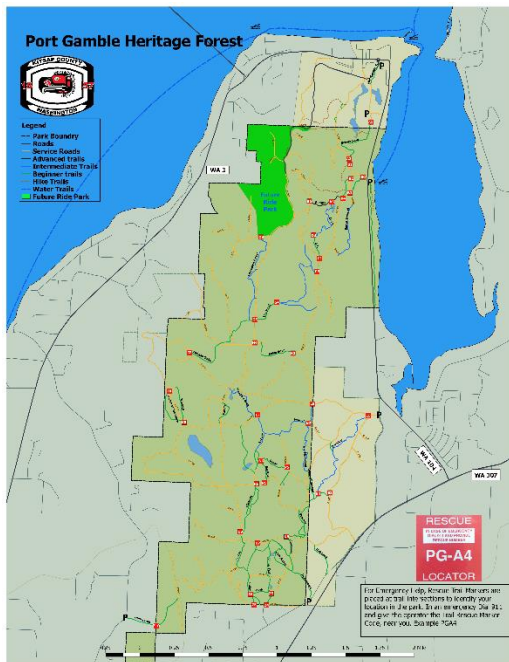
This final phase of the project was fueled by donations from over 1,200 community members, as well as many local partners, foundations and champions, who came together to raise \$3.5 million. Inspired by the community effort, matching grants were provided by Kitsap County (\$200,000) and Washington State (\$500,000) for a total of \$4.0 million in this final phase of the project.

The Port Gamble Forest property includes 65 miles of trails where already more than 20,000 hikers, birders, mountain bikers, equestrians, cyclists and runners recreate each year. At the north end of the property is a future recreational area for mountain biking. The property will be added to the Port Gamble Forest Heritage Park, which now totals 3,493 acres.

**Note:** To acquire the largest expanse of land for future park use, this land purchase includes a “Timber Deed” that allows timber harvest by Pope Resources for a final harvest in sections over a 25-year period. After the final tree cut, the land will be replanted. Then the forest and the land-base will be owned and managed by Kitsap County Parks. Forest replanting with native tree species, and forest stewardship will continue in perpetuity.

Existing recreational trails will be maintained during the co-management of the forestlands, with some interruptions during tree-thinning and harvest operations.

Existing Trail Maps:



## Rescue Trail Tags:

Trail intersections have been marked with “rescue tags”, which will help emergency response to locate the incidents using GPS coordinates linked to these trail codes.

**Beaver Pond Viewpoint** -- With the support of Great Peninsula Conservancy and an REI Co-op Grant, a new viewpoint has been developed along the edge of the upper Beaver Pond at the north end of the park. This simple viewpoint platform will control visitor impacts to the pond shoreline, minimize disturbance to waterfowl and beaver activity, while providing excellent pond views



### **Port Gamble (Sound to Olympics) Trail Feasibility Study**

Kitsap County is exploring the feasibility of an approximately 6-7 mile bicycle and pedestrian shared-use path connecting SR 104 in Port Gamble to Stottlemeyer Road. If built, the bicycle and pedestrian trail will provide a non-motorized corridor connecting locations within northern Kitsap County.

Kitsap County invites you to a community Open House to learn about the Port Gamble Trail Draft Feasibility Study; Wednesday, March 28 at 6:30 – 8:00 p.m., Village Green Community Center, 26159 Dulay Road NE, Kingston, WA. Draft Plan link: <http://bit.ly/portgambletrail>.

During the open house, County staff will provide an overview of the Draft Feasibility Study, share work study materials, and take public comments. All interested parties are invited to attend.

**The goal** of this Trail Feasibility Study is to examine possible trail alignments, environmental concerns, design and constructability, operational constraints, and the estimated cost of constructing a paved shared-use path.

#### **Users and design criteria:**

The route and path design must be able to accommodate pedestrian and bicycle users of all ages and abilities. The shared-use path would meet Federal Highway Administration (FHWA) design standards including a minimum 10-foot wide path with slopes 5% or less or special designs for slopes between 5% and 8%.

