



KITSAP COUNTY'S FOREST STEWARDSHIP PROGRAM

NEWBERRY HILL HERITAGE PARK

ECOLOGICAL FOREST MANAGEMENT

Starting in April 2020

GOAL: *Restore and encourage a healthy, vigorous forest that supports and sustains biological diversity.*

2014 FOREST HEALTH STATUS: 60% of Newberry Hill Heritage Park uplands (600-acres) lacked the complexity of a healthy natural forest ecosystem



← FOREST BEFORE THINNING

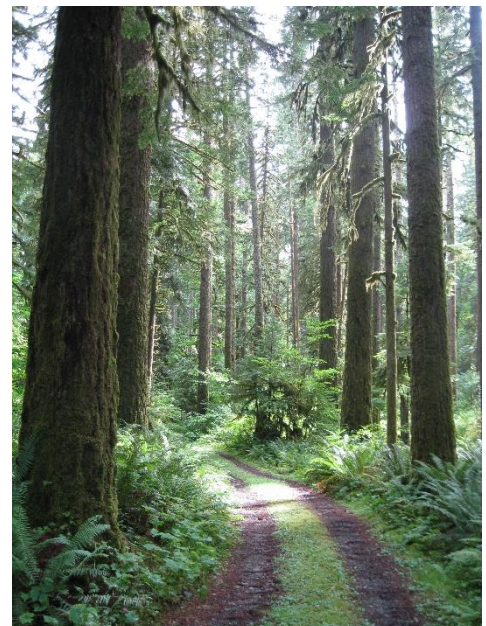
Over 100 years of commercial forest production limited the diversity of tree species and crowded out what was once a natural mix of conifers and deciduous trees with a variety of understory vegetation.

SCIENCE-BASED RESTORATION:

- 400-acres thinned (2014-2018) to open the forest canopy (tree cover)
- Planted 25,000 additional shade loving tree species.

FOREST HEALTH BENEFITS:

- **More sunlight reaches the forest floor** and encourages understory shrubs, berries, ferns, and more.
- **Shade-tolerant conifers and deciduous trees get a start:** hemlock, cedar, alder, maple
- **Varied tree species creates more and varied wildlife habitats** for owls, shrews, salamanders, weasels, deer, and more.



FUTURE FOREST LOOK →

See site map for project areas and trail closures.

For more information contact the County Community Forester – Arno Bergstrom.

Abergstr@co.kitsap.wa.us or (360) 620-8907