

# Kitsap County Base Map

## The Public Land Survey System (PLSS) in relation to roads, tax parcels, and special jurisdictions

This map is a key to Kitsap County's Public Land Survey System-based map sheet naming conventions.

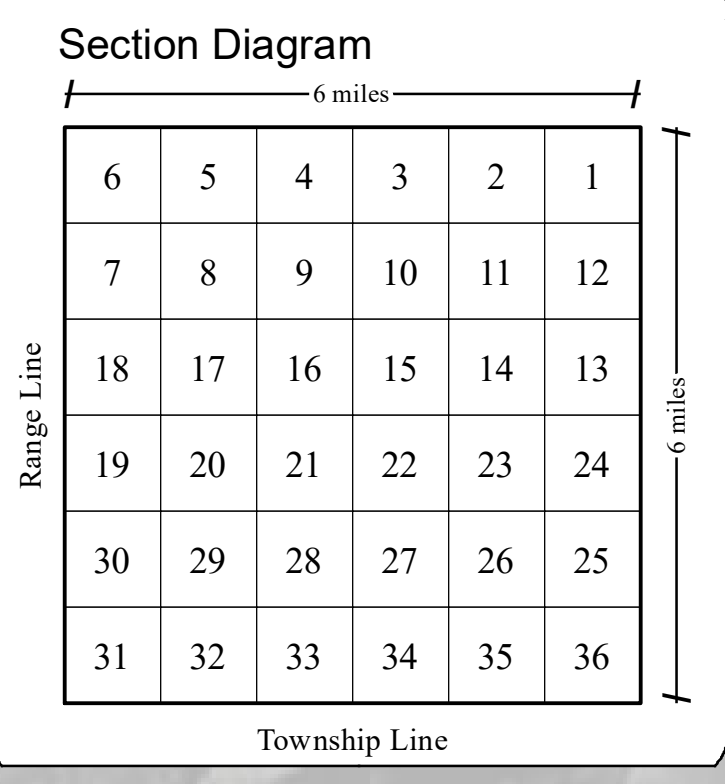
The PLSS was used by the original US Government Land Survey of Kitsap County to establish the basis for land ownership (cadastral) boundaries. This is the familiar Section, Township, Range system.

Many County Maps are available on sheets covering a single township and/or section. For convenience, the following naming convention is used:

A Letter is used to identify the Township/Range combination (eg. map "L" covers township 25 north, range 1 east, W.M.). Section maps, such as Assessor's Tax Maps, bear the Township/Range Letter, followed by the Section Number. Thus, Section 10, Township 25 North, Range 1 East would be Map "L10". These may be further broken down into half-sections, eg. "L10S" for the South half, or into quarters numbered 1-4 beginning in the northeast quadrant and proceeding counterclockwise.

**Legend**

- PLSS Subdivision Lines
- Arterial Roads
- State Highways
- Tax Parcels
- Tribal Reservation
- Military Facility

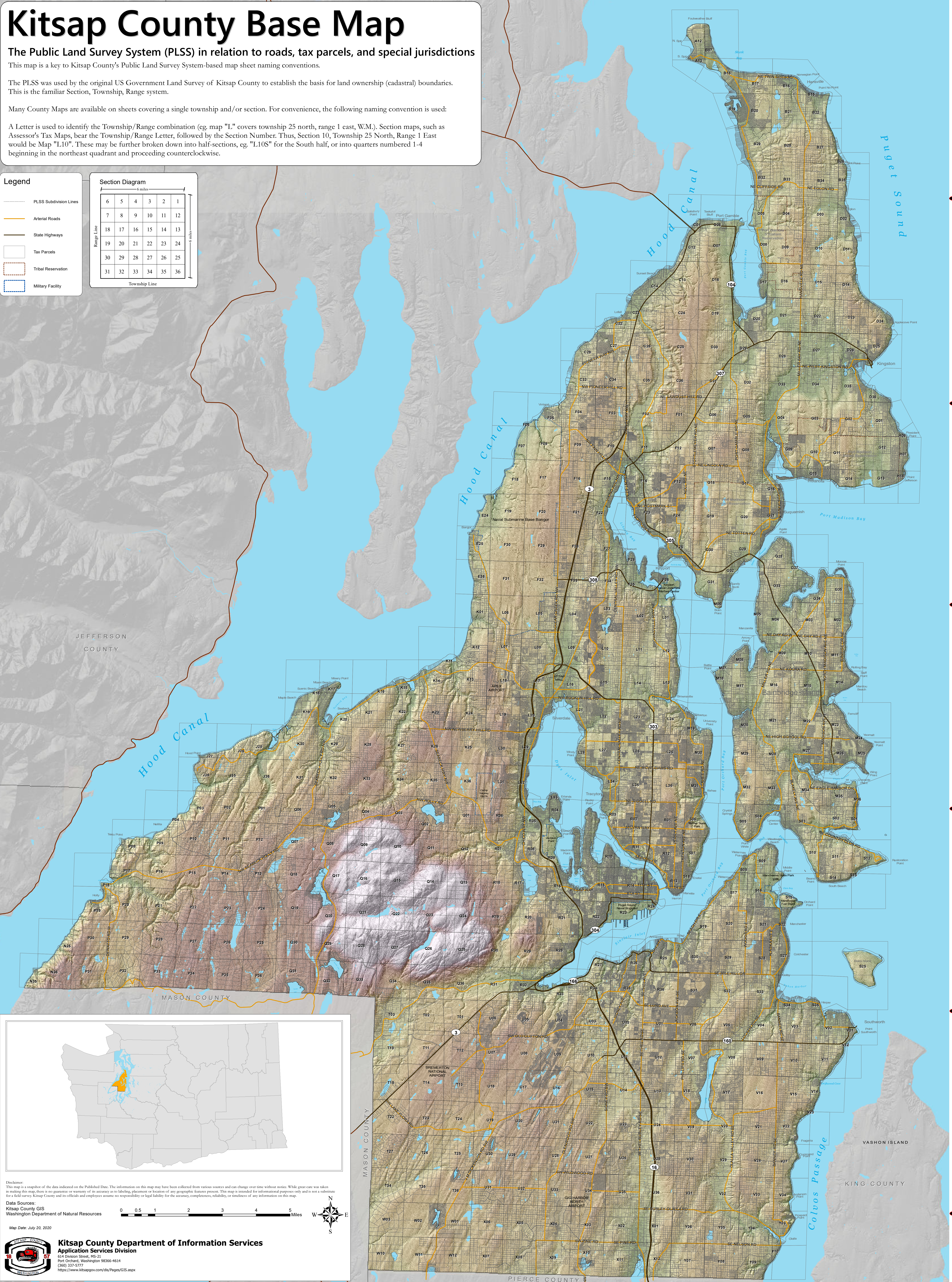


**Disclaimer:**  
This map is a snapshot of the data indicated on the Published Date. The information on this map may have been collected from various sources and can change over time without notice. While great care was taken in making this map, there is no guarantee or warranty of its accuracy as to labeling, placement or location of any geographic features present. This map is intended for informational purposes only and is not a substitute for a field survey. Kitsap County and its officials and employees assume no responsibility or legal liability for the accuracy, completeness, reliability, or timeliness of any information on this map.

**Data Sources:**  
Kitsap County GIS  
Washington Department of Natural Resources

**Map Date:** July 20, 2020

**Kitsap County Department of Information Services**  
Application Services Division  
614 Division Street, MS-21  
Port Orchard, Washington 98366-4614  
(360) 337-5777  
<https://www.kitsapgov.com/des/Pages/GIS.aspx>



T 28 N  
T 27 N  
T 26 N  
T 25 N  
T 24 N  
T 23 N

T 28 N  
T 27 N  
T 26 N  
T 25 N  
T 24 N  
T 23 N