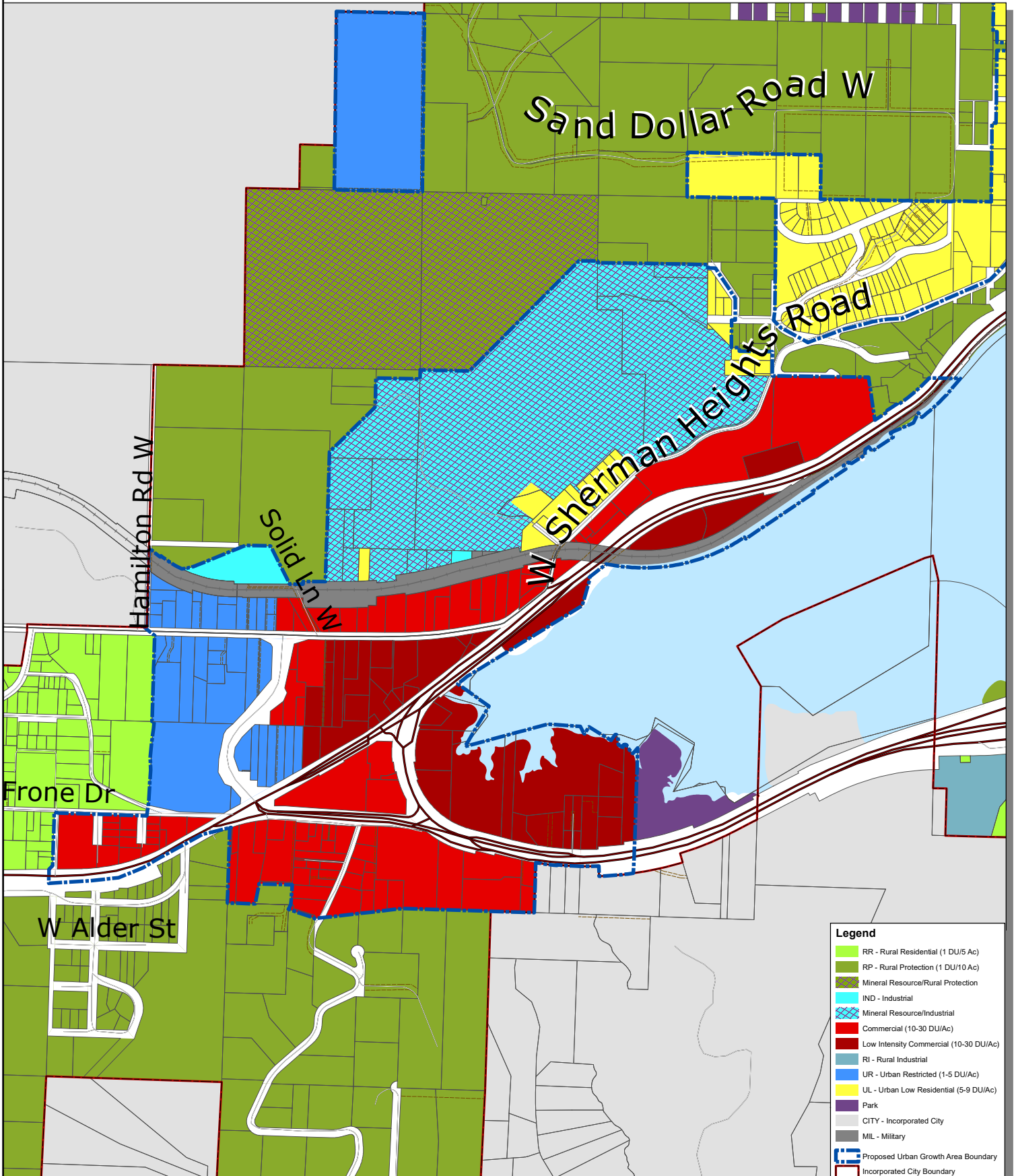


# Gorst Urban Growth Area

DRAFT



This map was created from existing map sources, not from field surveys. Determination of fitness for use lies with the user; as does the responsibility for understanding the accuracy and limitations of this map and data.

The information on this map may have been collected from various sources and can change over time without notice. While great care was taken in making this map, there is no guarantee or warranty of its accuracy as to labeling, placement or location of any geographic features present. This map is intended for informational purposes only and is not a substitute for a field survey.

Kitsap County and its officials and employees assume no responsibility or legal liability for the accuracy, completeness, reliability, or timeliness of any information on this map.

Ord No 612-2022 Comprehensive Plan Amendment

Map Published Date: April 26, 2023



## Zoning - Alternative 2

FINAL DRAFT



Kitsap County Department of Community Development  
 614 Division Street, MS-36, Port Orchard, Washington 98366  
 VOICE (360) 337-5777 (Kitsap One) \* <https://www.kitsapgov.com/>

### Legend

- RR - Rural Residential (1 DU/5 Ac)
- RP - Rural Protection (1 DU/10 Ac)
- Mineral Resource/Rural Protection
- IND - Industrial
- Mineral Resource/Industrial
- Commercial (10-30 DU/Ac)
- Low Intensity Commercial (10-30 DU/Ac)
- RI - Rural Industrial
- UR - Urban Restricted (1-5 DU/Ac)
- UL - Urban Low Residential (5-9 DU/Ac)
- Park
- CITY - Incorporated City
- MIL - Military
- Proposed Urban Growth Area Boundary
- Incorporated City Boundary
- State Highway
- Collector / Arterial
- Local Access; Local Road
- Easement
- Railroad Lines
- Greater Puget Sound hydrology