
**Kitsap County
Planning Commission**

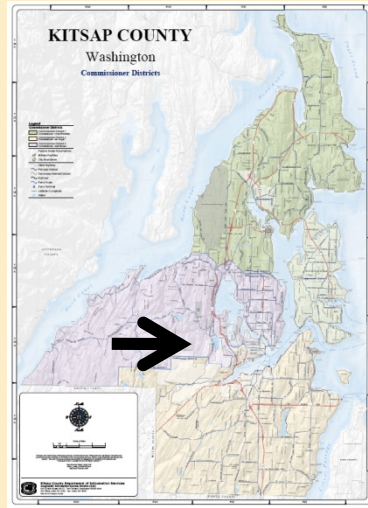
Open Space Application

Kitsap Golf & Country Club

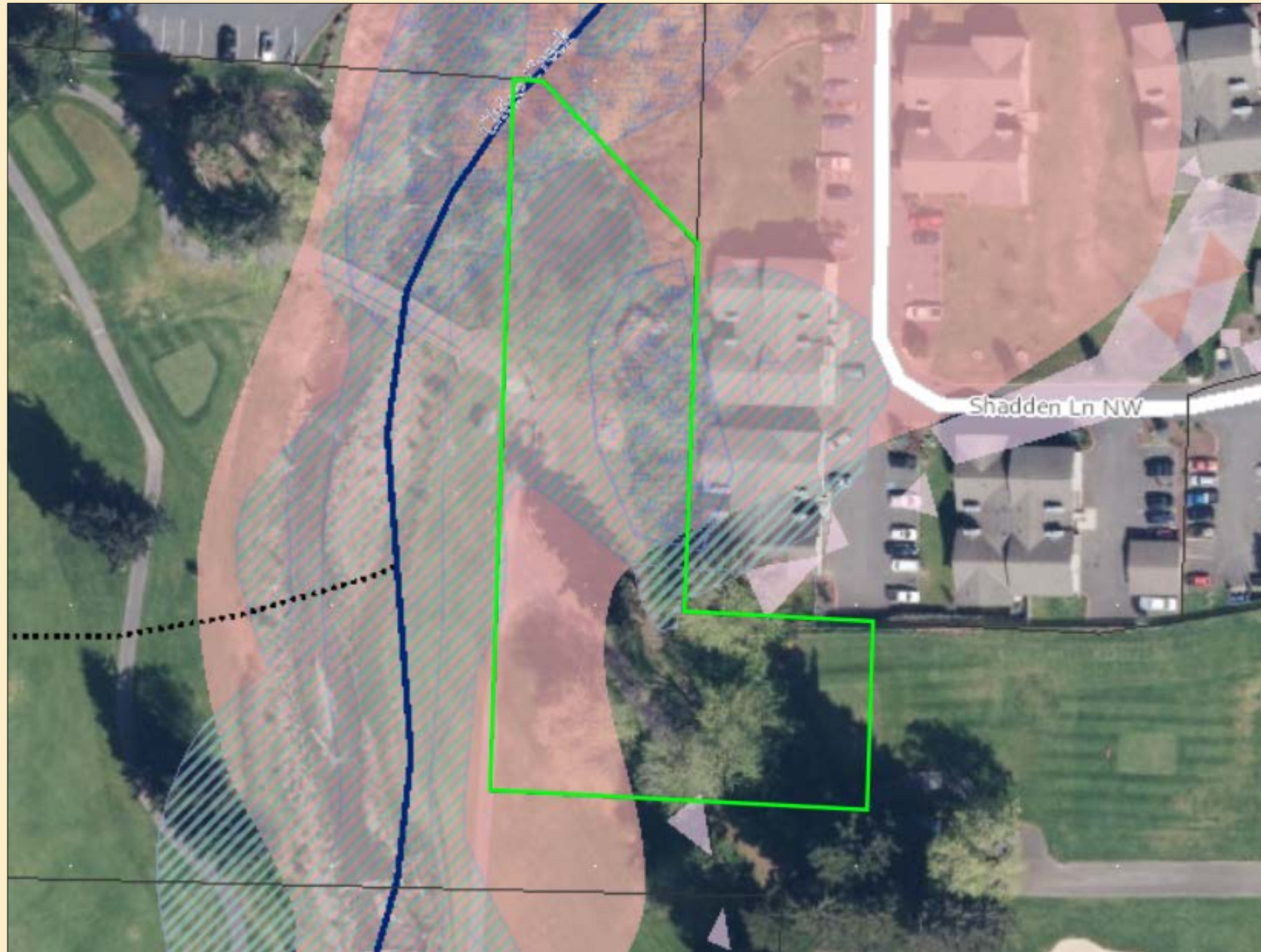
November 14, 2017



Kitsap Golf & Country Club



Kitsap Golf & Country Club



Kitsap Golf & Country Club



Shoreline Designation – Rural Conservancy



Kitsap Golf & Country Club

High Priority Resources

- Fish-Rearing Habitat Ponds & Primary Stream Buffers (Chico Creek)
- Watershed: Chico Creek
- Critical Aquifer Recharge Area Category 1

Medium Priority Resources

- Conservancy Shoreline Environments

Low Priority Resources

- Private Recreation Areas

Kitsap Golf & Country Club

TAX SHIFT ESTIMATE

Owner
Tax Account
Current Use Acres
Total Acreage
Land Market Value
Homesite Acreage
Homesite Market Value
Open Space Land Reduction Factor
Farm Land Value
Design Forest Land AV
Improvement Value
Taxes based a on levy rate of
Tax Year

KITSAP GOLF & COUNTRY CLUB		
052401-3-073-2008		
DFL	Farm	OpenSpace
0.00	0.00	1.02
1.02		
\$54,050		
0.00	acre(s)	
\$0		
60%		
\$0		
\$0		
\$0		
12.600594		
2017		

				Tax Year 2017		
Taxable Value			Value	Tax		
CURRENT	Land		54,050			
	Improvements		0			
	Total		54,050			
	Taxes				681.06	
PROPOSED	Homesite	Ac	0.00	\$0	0	
		Value				
	Designated Forest Land	Ac	0.00	\$0	0	
		Approx Rate				
	CU Farm & Agricultural	Ac	0.00	\$597	0	
		Value				
	CU Open Space	Ac	1.02	\$54,050	21,620	
		Value				
Improvements			0			
Total			21,620			
Taxes					272.42	
Difference			32,430		408.64	
Owner's Taxes DECREASE By				\$409		
Total Tax Shift				\$409		

	Acreage	Total Land AV
Total Land:	1.02	= \$54,050
Homesite:	0.00	= \$0

Land Value less the homesite:	\$54,050
Reduced value with exemption:	\$21,620

Adjusted Land Value:	\$32,430
At the 2017 Tax Rate of :	12.600594
The Estimated Tax Shift =	\$409

