

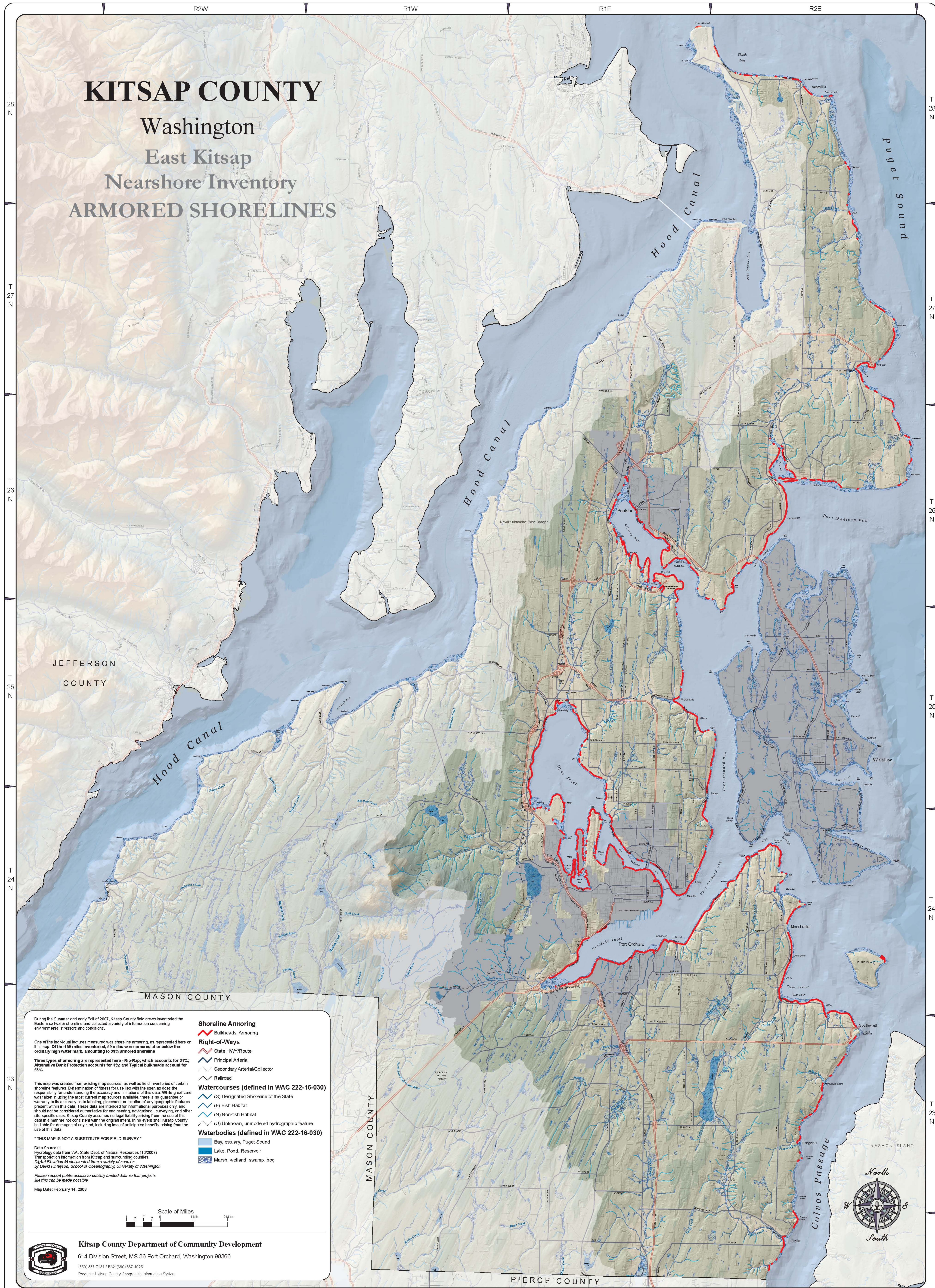
KITSAP COUNTY

Washington

East Kitsap

Nearshore Inventory

ARMORED SHORELINES



During the Summer and early Fall of 2007, Kitsap County field crews inventoried the Eastern saltwater shoreline and collected a variety of information concerning environmental stressors and conditions.

One of the individual features measured was shoreline armoring, as represented here on this map. Of the 156 miles inventoried, 59 miles were armored at or below the ordinary high water mark, amounting to 38% armored shoreline.

Three types of armoring are represented here - Rip-Rap, which accounts for 34%; Alternative Bank Protection accounts for 3%; and Typical bulkheads account for 63%.

This map was created from existing map sources, as well as field inventories of certain shoreline features. Determination of fitness for use lies with the user, as does the responsibility for understanding the accuracy and limitations of this data. While great care was taken in using the most current map sources available, there is no guarantee or warranty to its accuracy as to labeling, placement or location of any geographic features present within this data. These data are intended for informational purposes only, and should not be considered authoritative for engineering, navigational, surveying, and other site-specific uses. Kitsap County assumes no legal liability arising from the use of this data in a manner not consistent with the original intent. In no event shall Kitsap County be liable for damages of any kind, including loss of anticipated benefits arising from the use of this data.

"THIS MAP IS NOT A SUBSTITUTE FOR FIELD SURVEY"

Data Sources:
 Hydrology data from WA State Dept. of Natural Resources (10/2007)
 Transportation information from Kitsap and surrounding counties.
 Digital Elevation Model created from a variety of sources
 by David Pflueger, School of Oceanography, University of Washington

Please support public access to publicly funded data so that projects like this can be made possible.

Map Date: February 14, 2008

Shoreline Armoring
 Bulkheads, Armoring

Right-of-Ways
 State HWY/Route
 Principal Arterial
 Secondary Arterial/Collector
 Railroad

Watercourses (defined in WAC 222-16-030)
 (S) Designated Shoreline of the State
 (F) Fish Habitat
 (N) Non-fish Habitat
 (U) Unknown, unmodeled hydrographic feature.

Waterbodies (defined in WAC 222-16-030)
 Bay, estuary, Puget Sound
 Lake, Pond, Reservoir
 Marsh, wetland, swamp, bog

Scale of Miles
 0 1 2 Miles

Kitsap County Department of Community Development
 614 Division Street, MS-36 Port Orchard, Washington 98366
 (360) 337-7161 * FAX (360) 337-4925
 Product of Kitsap County Geographic Information System

