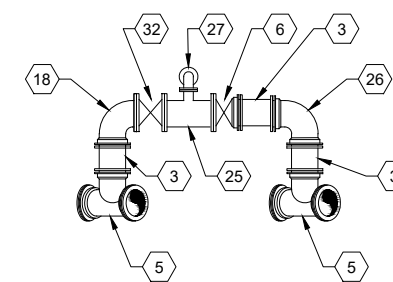
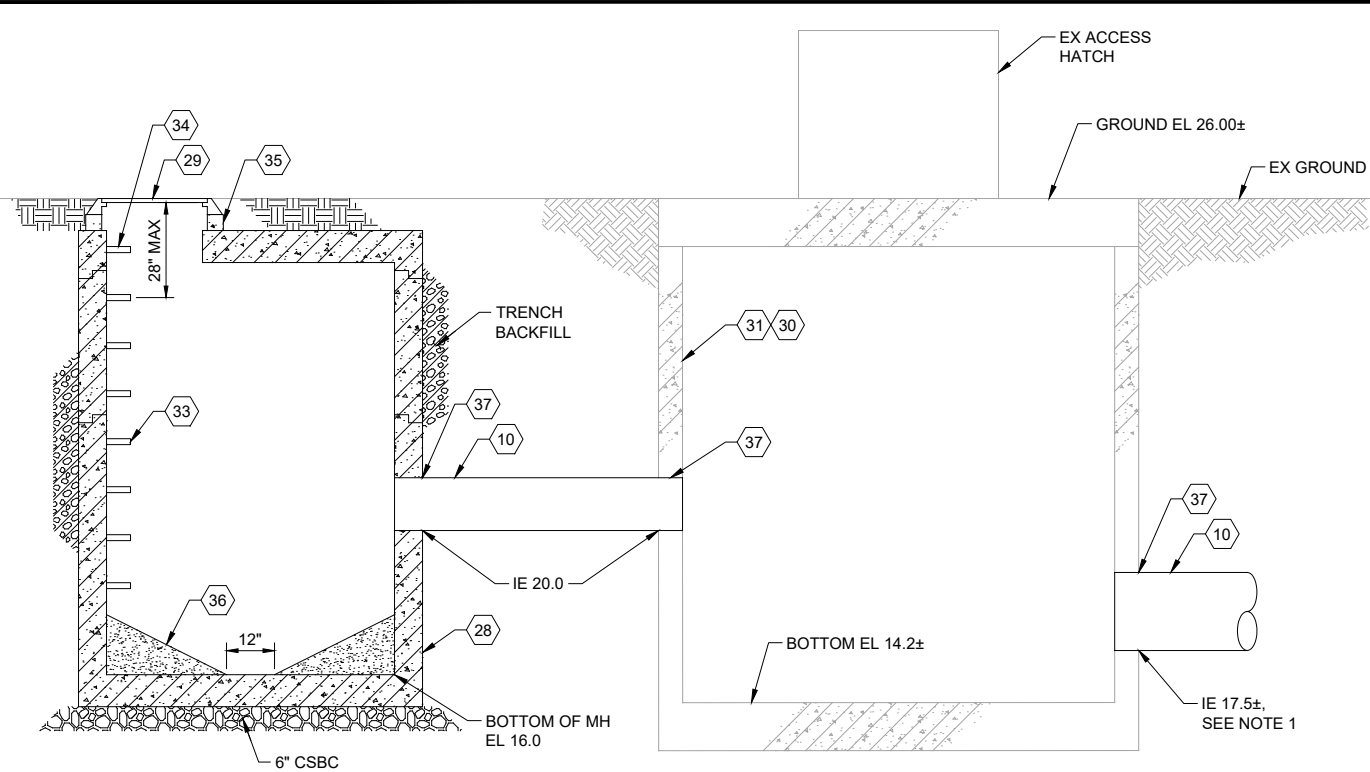


NOTES:

1. POTHOLE EX SEWER TO VERIFY DEPTH AND HORIZONTAL LOCATION PRIOR TO INSTALLING TEMPORARY BYPASS. PROVIDE THIS INFORMATION TO ENGINEER FOR VERIFICATION OF DESIGN.
2. RESTRAIN ALL MECHANICAL JOINTS AND PUSH ON JOINTS.
3. DUCTILE IRON FITTINGS SHALL CONFORM TO SYSTEM 3 IN SECTION 15060 OF THE SPECIFICATIONS.

MATERIALS LIST:

- | | |
|---|---|
| 1 EX 12" PIPE, SEE NOTE 1 | 23 12" GV, MJ xMJ, SEE BYPASS PLAN ON DWG C-202 |
| 2 12" COUPLING | 24 12" WET TAP, SEE BYPASS PLAN ON DWG C-202 |
| 3 12" C900 PVC PIPE | 25 12" x 4" DI TEE, FL x FL |
| 4 12" DI 22.5° BEND, MJ x MJ | 26 12" DI 90° BEND, MJ x MJ |
| 5 12" DI VERTICAL TEE, MJ x MJ | 27 4" DI 90° BEND, FL x FL |
| 6 12" GV, FL x MJ | 28 72"Ø FLAT TOP MH |
| 7 18" x 12" DI WYE, MJ x FL | 29 MH FRAME AND COVER, PER DETAIL 2/C-02 |
| 8 18" x 12" DI WYE, FL x FL | 30 18" PIG RETRIEVER VAULT |
| 9 18" ADAPTOR, FL x MJ | 31 EX CONCRETE VAULT, 9' ID |
| 10 18" C905 PVC PIPE | 32 12" GV, FL x FL |
| 11 18" GV, FL x MJ | 33 POLYPROPYLENE SAFETY STEPS AT 12" OC |
| 12 12" DI 22.5° BEND, MJ x FL | 34 HAND HOLD PER DETAIL 1/C-02 |
| 13 18" DI 45° BEND, FL x MJ | 35 MH GRADE RING PER DETAIL 1/C-02 |
| 14 18" x 14" DI REDUCER, FL x FL | 36 GROUT BOTTOM OF MH AT 2H:1V SLOPE |
| 15 EX 12" PIG LAUNCH | 37 BOOT OR COLLAR |
| 16 EX 14" PIPE, SEE NOTE 1 | 38 4" HDPE FLANGE ADAPTOR WITH BACKUP RING |
| 17 18" DI 45° BEND, MJ x MJ | 39 EX 12" GV |
| 18 12" DI 90° BEND, FL x MJ | |
| 19 4" SDR 11 IPS HDPE PIPE | |
| 20 4" GV, FL x FL | |
| 21 4" SDR 11 IPS HDPE 45° BEND | |
| 22 AIR/VACUUM VALVE ASSEMBLY, SEE DETAIL 5/C-04 | |



FILE NAME (UPDATED BY) PLOT DATE & TIME
 C:\P\WORKING\SEA\00950325\98A-P13-10282_C-201A.DWG (600) DEC 16 2016 15:10:09
 XREFS: Disclaimer, Fisher, Kitsap, IB

No.	Revision	Date	By	App'd

HDR
HDR Engineering, Inc.

BHC CONSULTANTS
BHC Consultants, LLC
1601 Fifth Avenue, Suite 500
Seattle, Washington 98101
206.505.3400
206.505.3406 (fax)
www.bhcconsultants.com

Designed: T. Fisher, P.E.
Drawn: P. Simon
Checked: R. Dorn, P.E.
Approved: M. Harper, P.E.

Scale:
As Shown
One Inch At Full Scale
If Not One Inch Scale Accordingly



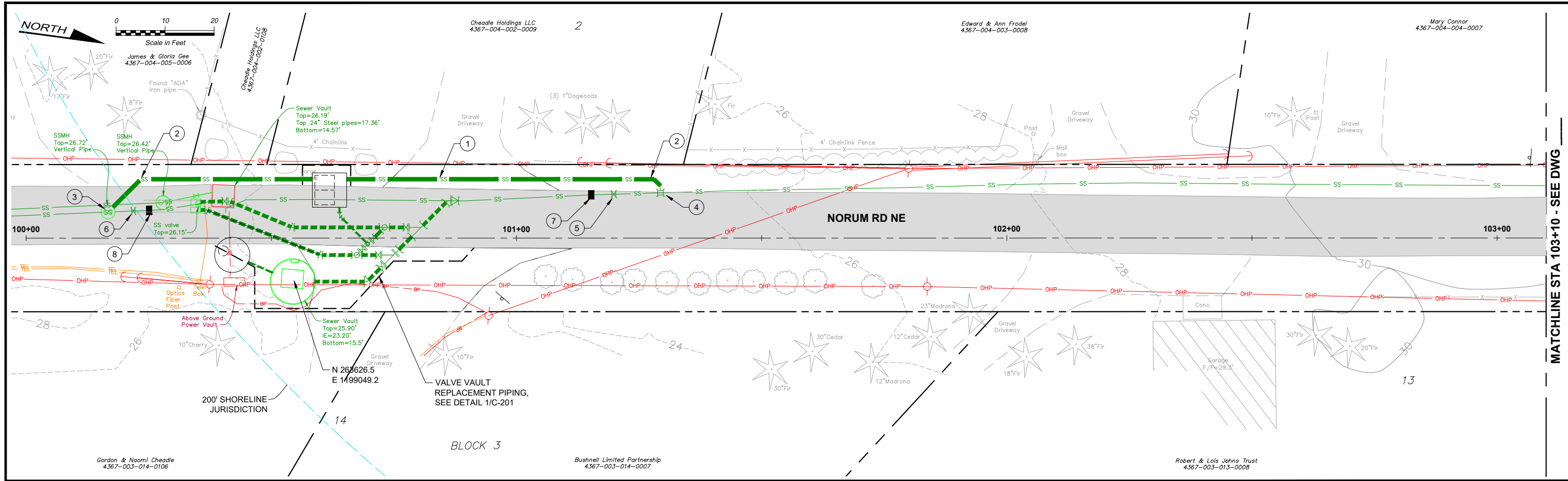
Kitsap County Public Works
614 Division Street, MS 26
Port Orchard, WA 98366

KITSAP COUNTY PS 16/67 UPGRADES
LEMOLO IMPROVEMENTS
CIVIL AND SITE DETAILS

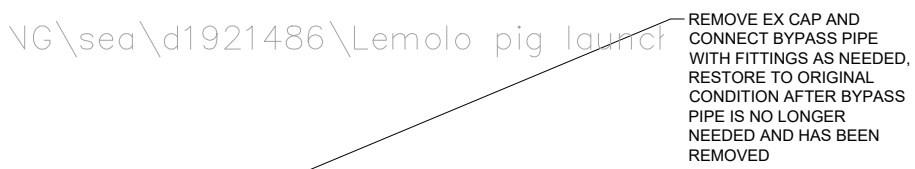
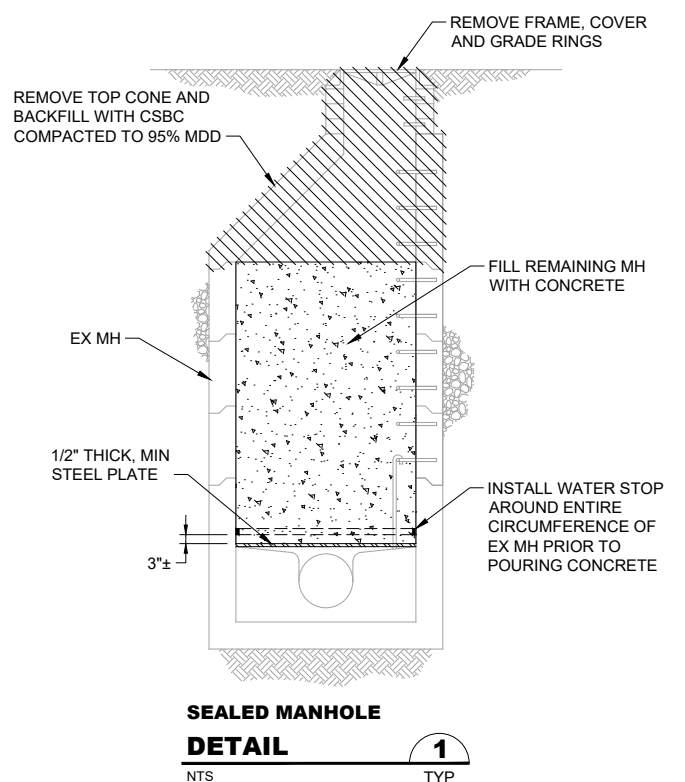
Call 48 Hours Before You Dig
1-800-424-5555
UNDERGROUND SERVICE

Drawing: **C-201**
Sheet: **98** Of **101**
File: 98A-P13-10282_C-201
Date: February 2017





MATCHLINE STA 103+10 - SEE DWG



CONSTRUCTION NOTES:

- ① TEMPORARY 12" HDPE SDR 21 SEWER BYPASS PIPE, SEE NOTE 1 AND 5.
- ② 12" HDPE 45° BEND
- ③ CONNECT TEMPORARY BYPASS PIPE TO EX 12" PIG LAUNCH, SEE DETAIL 2/-
- ④ WET TAP EX. 14" SS WITH 12" TAP, STA 101 + 30± SUPPLY FITTINGS AS NEEDED TO BRING PIPE TO SURFACE
- ⑤ WET TAP EX. 14" SS AND INSTALL LINE STOP, STA 101+20±
- ⑥ WET TAP EX. 12" SS AND INSTALL LINE STOP, STA 100+22±
- ⑦ CUT-IN 14" GV AFTER TEMPORARY BYPASS PIPE IS ACTIVATED. CLOSE GATE VALVE UNTIL TEMPORARY BYPASS PIPE IS NO LONGER NEEDED. STA 101+15±
- ⑧ CUT-IN 12" GV AFTER TEMPORARY BYPASS PIPE IS ACTIVATED. CLOSE GATE VALVE UNTIL TEMPORARY BYPASS PIPE IS NO LONGER NEEDED. STA 100+27±

NOTES:

1. DO NOT DIVERT FLOW TO TEMP. BYPASS PIPE UNTIL MH G22-3001 AND MH G22-3002 HAVE BEEN SEALED.
2. INSTALL LINE STOP ON EX. 14" SS TO DIVERT FLOW PRIOR TO INSTALLING LINE STOP ON EX. 12" SS.
3. AFTER VALVE VAULT REPLACEMENT PIPING HAS BEEN CONSTRUCTED AND SUCCESSFULLY CLEANED AND TESTED, DIVERT FLOW BACK INTO THE SEWER SYSTEM, DISMANTLE AND REMOVE THE TEMPORARY BYPASS PIPE.
4. RESTORE ALL DISTURBED AREAS TO ORIGINAL CONDITION OR BETTER.
5. BURY TEMPORARY BYPASS PIPE AT DRIVEWAY AND IN ALL AREAS SUBJECT TO VEHICULAR TRAFFIC.

FILE NAME (UPDATED BY) PLOT DATE & TIME
 C:\P\WORKING\SEA\10050325\99-P13-10282-C-202.DWG (GOC) DEC 09 2015 07:42:01
 XREFS: Disclaimer, Fisher, Kitsap, Lemolo, Lemo, Prof, X13-10282, Mlyn-Prof, X13-10282, Prop, SS, Lemolo

No.	Revision	Date	By	App'd



Designed: T. Fisher, P.E.
 Drawn: P. Simon
 Checked: R. Dorn, P.E.
 Approved: M. Harper, P.E.

Scale:
 Horiz: 1" = 10'-0"
 Vert: 1" = 5'-0"
 One Inch At Full Scale
 If Not One Inch Scale Accordingly



KITSAP COUNTY PS 16/67 UPGRADES
LEMOLO IMPROVEMENTS
NORUM RD NE
SHEET 1 OF 2

Calling: **C-202**
 Sheet: **99** Of **101**
 File: 99-P13-10282_C-202
 Date: February 2017

RECORD DRAWING

Call 48 Hours Before You Dig
 1-800-424-5555
 UNDERGROUND SERVICE