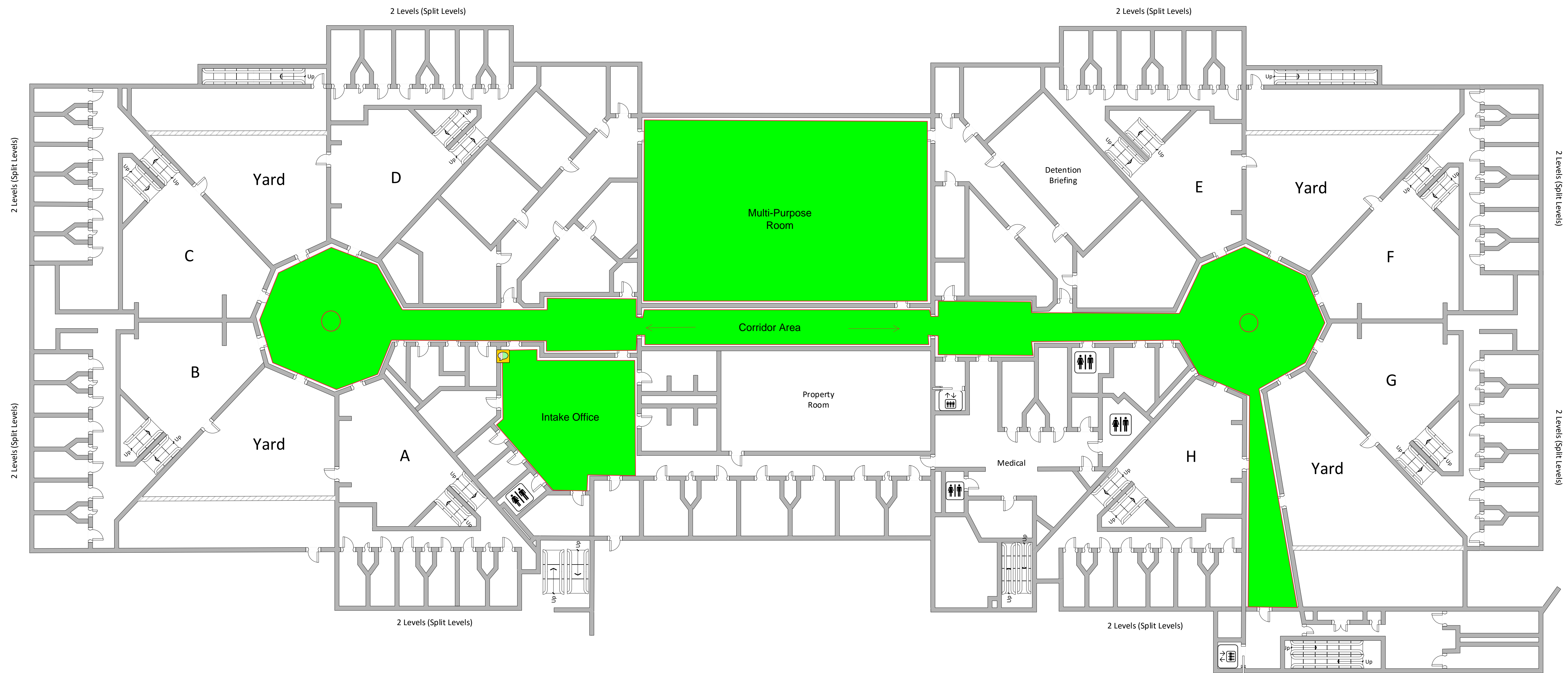


Attachment "A"
Kitsap County Juvenile Detention Center Flooring Project
Detention Center Building - Second Floor



Highlighted Area Total Square Footage
Approximately 6,120 square feet*

Corridor Area ~ 3,370 sq. ft.*
Multi-Purpose Room ~ 1,840 sq. ft.*
Intake Office ~ 910 sq. ft.*

* To be verified by Contractor