

KITSAP COUNTY

Commissioner Redistricting

2021

Kitsap County Policy Division

October 6, 2021



WHY REDISTRICT?

Kitsap County is required by Washington State RCW 29A.76.010 to update their commissioner voting districts to reflect the results of each decennial census (2020).

Last completed in 2011 and before that in 2002.



WHY REDISTRICT?

Due to COVID and other federal issues, access to Census data was delayed by more than six months.

Must be complete by December 2021
to meet the needs of the 2022
elections.

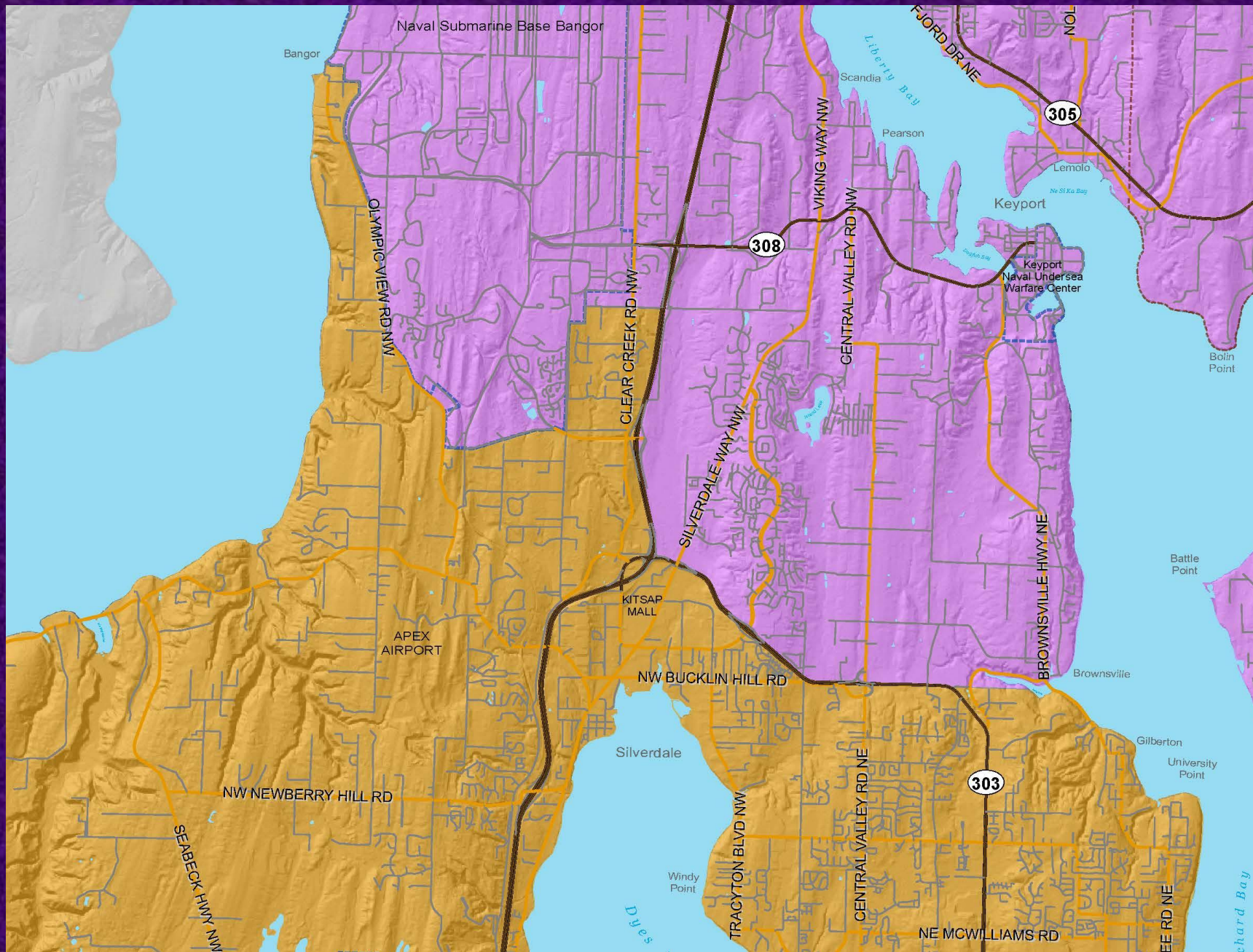


CRITERIA

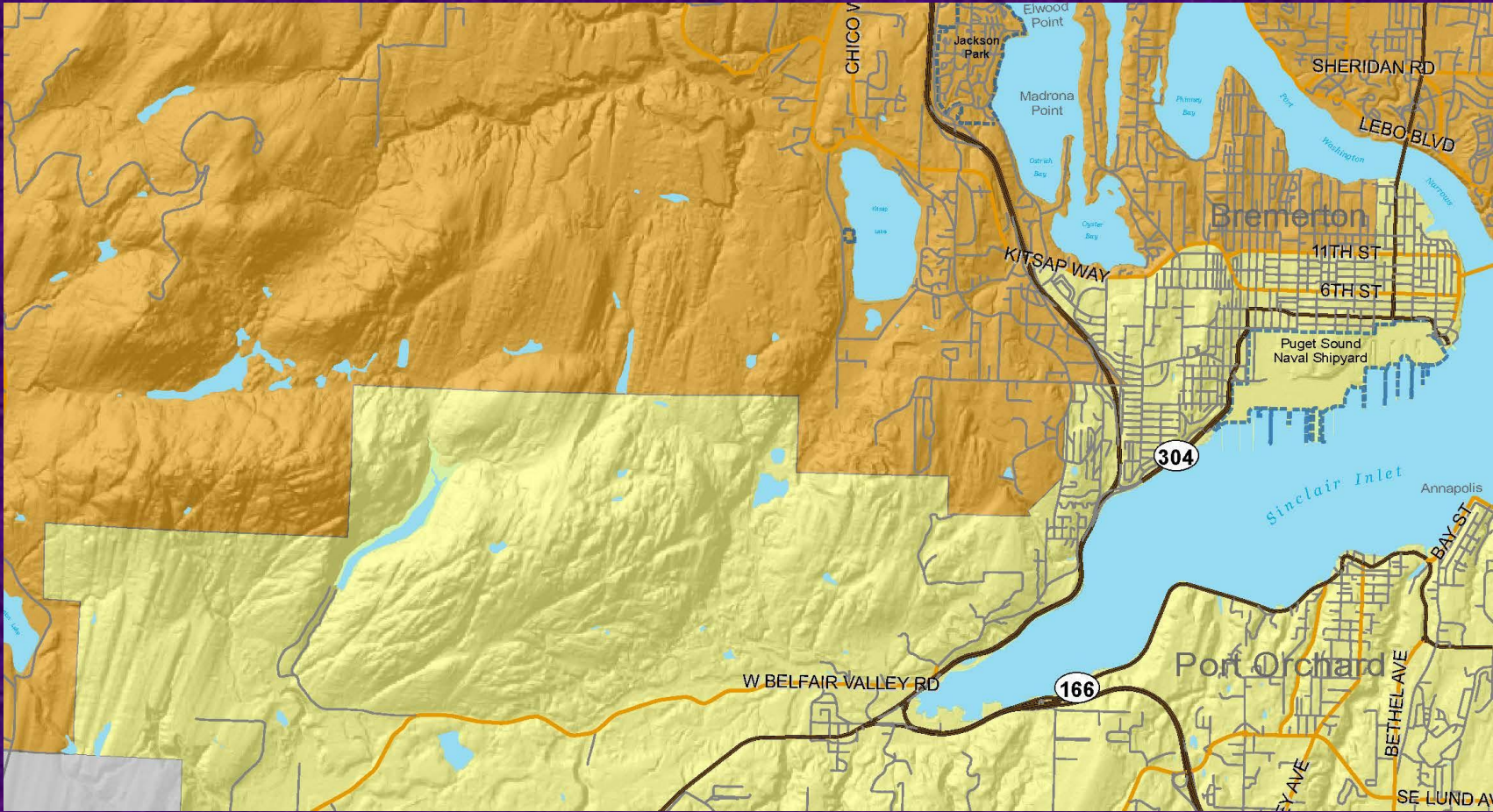
- Each district shall consider natural boundaries and preserve existing communities, as feasible.
- Each district shall be nearly equal in population as possible.
- Each district shall be as compact as possible (avoid unusual irregular boundaries).
- Each district shall consist of geographically-contiguous area (no islands).
- Each district shall not be configured in a way as to disfavor any racial group or political party.



CURRENT BOUNDARIES



CURRENT BOUNDARIES



2020 POPULATION

DISTRICT 1 = 91,111

DISTRICT 2 = 93,885

DISTRICT 3 = 90,615

**<3.5% DIFFERENCE
BETWEEN DISTRICTS**



PROCESS

- Assess existing boundaries for population equality (September)
- Public presentations regarding the process (September/October)
- Develop alternatives based upon the mandated criteria (October)
- Release of Draft Alternatives (late October)
- Public Open House (early November)
- Hearing before the Board of Commissioners (late November)
- Approval (December)



MORE INFORMATION

Eric Baker, Policy Manager

ebaker@co.kitsap.wa.us

(360) 337-4495

