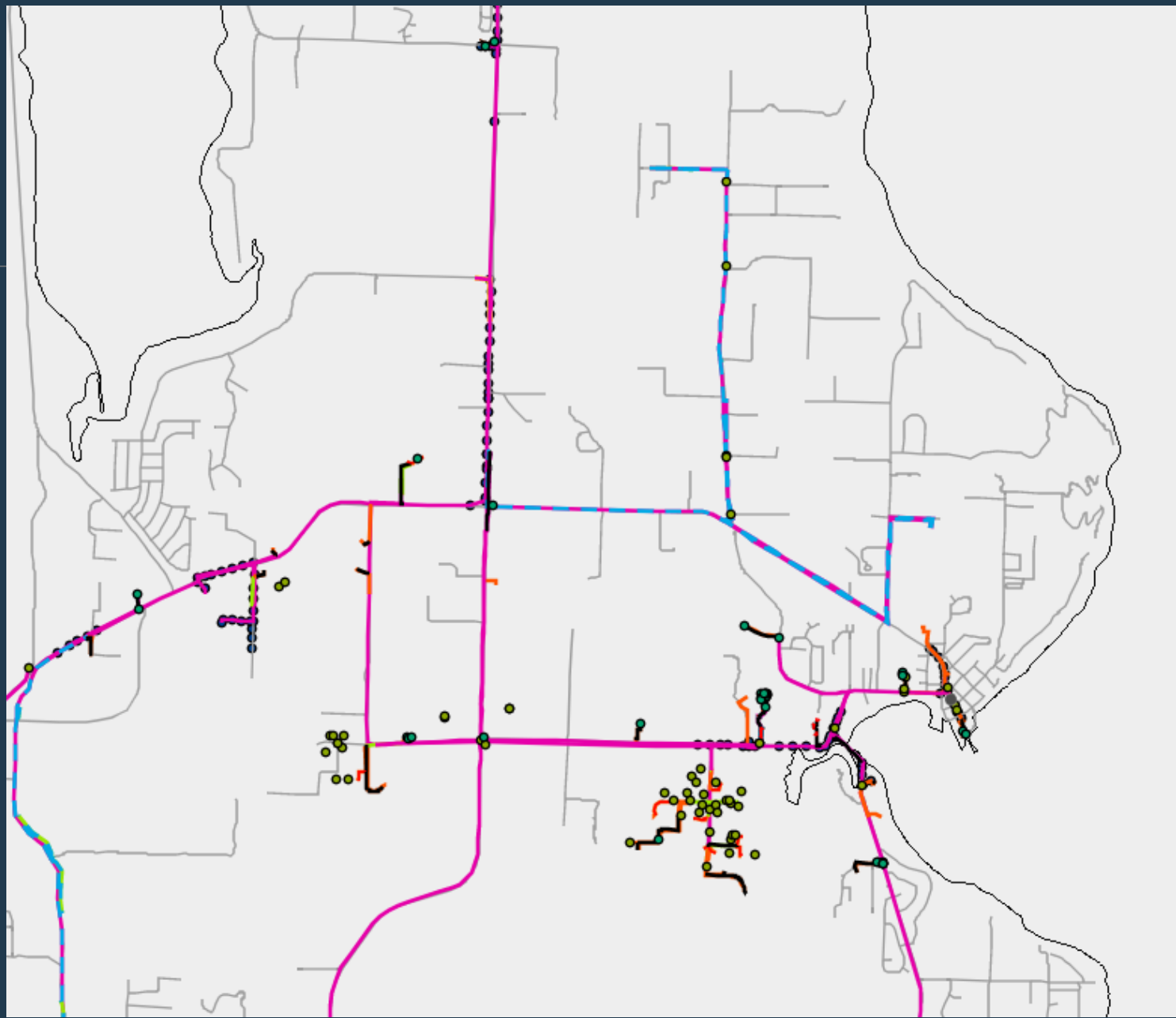


Kingston Citizens Advisory Council

Meeting June 9th, 2021

KITSAP PUD FIBER-OPTIC NETWORK



How do we Connect?

- Kitsap PUD installs Customer Premises Equipment (CPE)
- Retail Service Provider (ISP) connects directly to CPE equipment
- Internal wiring is the responsibility of the homeowner or ISP



Who is Responsible when It Breaks?



- WE ARE!
- KPUD will maintain and operate the infrastructure
- Staff will monitor for outages and respond if necessary*

Who Pays for that?

- The monthly service fees that are charged to the retail service providers will pay for the operation and maintenance of fiber and equipment

What is an LUD?

LUD (Local Utility District) is a financing mechanism for a group of homeowners to cover construction costs for utility improvements

Construction costs are financed for 20 years by a Lien placed against the property which is billed annually through the Kitsap County Treasurer's Office

LUD COST

Estimated Build Cost: (\$)

Number of Participating Homes: (#)

$(\$)/(\#) = \sim (\$)$ per Homeowner

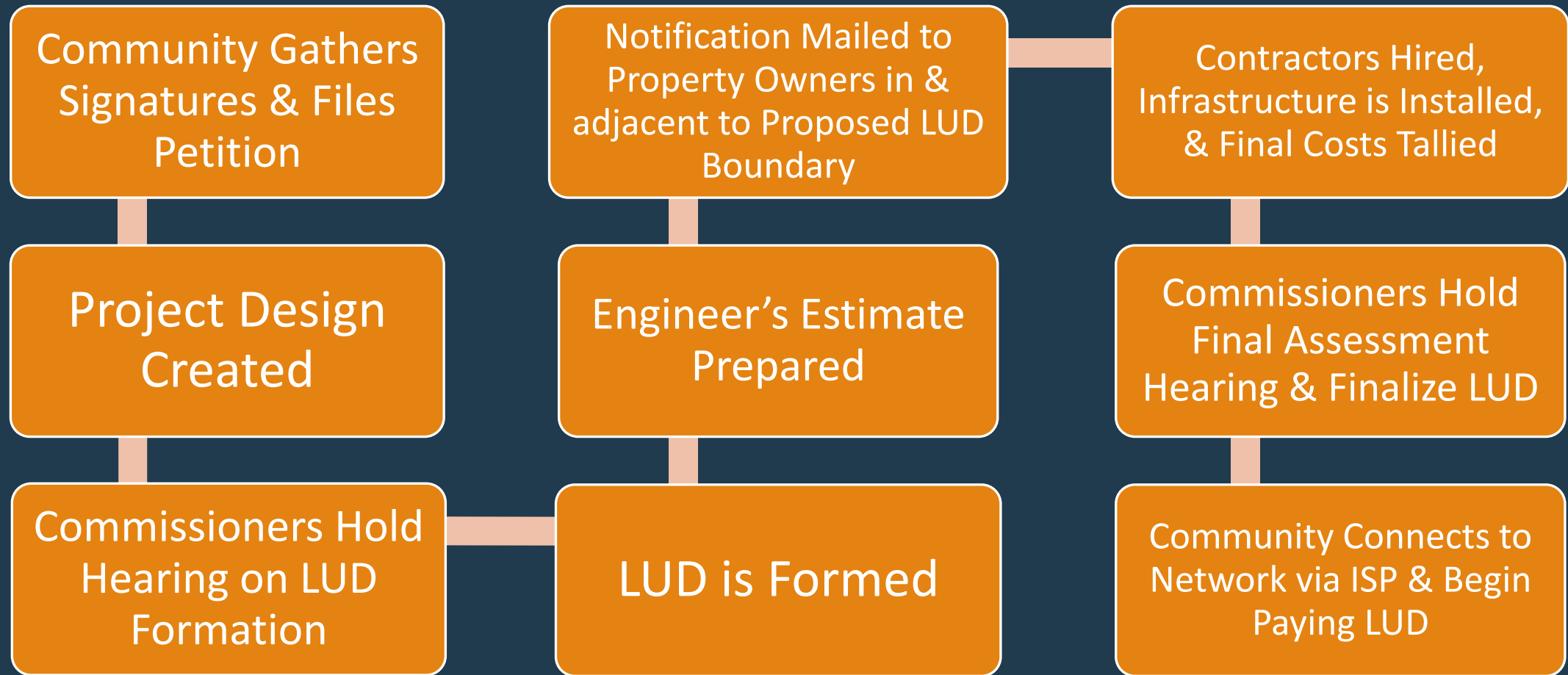
- Splicing from Trunk
- Conduit Installation
- Fiber Installation
- Fiber Termination at home
- Customer Electronics

What are the steps for an LUD?



1. Community petitions KPUD Board of Commissioners
2. KPUD creates LUD design
3. KPUD passes resolution creating LUD & sets LUD Formation Hearing
4. KPUD Board holds Formation Hearing & approves construction
5. KPUD holds Bid Opening for project
6. Contractor awarded project
7. Construction completed (typically 45 working days)
8. KPUD completes splicing
9. KPUD schedules exterior Equipment Installation with Homeowners
10. ISP completes interior installation, activating customer
11. Final hearing set to finalize LUD
12. KPUD holds final hearing for the LUD & provides final documentation to the KC Treasurer's Office.
13. Kitsap County Treasurer's Office mails notification to property owners & provides 30-day payment period prior to final assessments being liened against the property.

Project Cycle






When do I start paying?



- Once LUD has been finalized, Kitsap County Treasurer's office will mail letters to LUD participants giving 30 days to pay off the full assessment, pay a partial amount or no payment is required during this time
- 1st statement will be received on the 1-year anniversary of finalization
- Payment will have a set principal amount and the interest amount will flex based on remaining balance

Online Market Place

Kpud.broadbandportal.net

	High Capacity 100Mbps Residential Service, Monthly 100Mbps download and upload! Lowest Latency. No data overage fees. Net253 supports net neutrality. Month to Month	Monthly cost \$57.50 Start cost \$100.00 Contract period 0 month/s Cancellation notice period 1 month/s
Read more		Search address for availability
	High Speed Internet - 100/100 No Contract! 100Mbps Up and Down. Fast, Friendly and Reliable Internet Service. High Speed Fiber Optic Connection. No data caps or over charges.	Monthly cost \$59.90 Start cost \$0.00 Contract period 0 month/s Cancellation notice period 1 month/s
Read more		Search address for availability
NOPDC	Fiber 100/100 100Mbps residential fiber optic Internet service.	Monthly cost \$59.95 Start cost \$0.00 Contract period 0 month/s Cancellation notice period 0 month/s
Read more		Search address for availability
	High Speed Internet - 100/100 No Contract! With iFIBER Internet you will be on The fastest Internet in Washington. Shop, Surf and Stream like never before. Save time and money with our 100Mbps connection. No datacaps or overage charges. Pure high-speed fiber.	Monthly cost \$59.95 Start cost \$0.00 Contract period 0 month/s Cancellation notice period 0 month/s
Read more		Search address for availability

FAQs

Q: Who completes the fiber infrastructure construction?

- A: Small Works Contractor based on lowest bid.

Q: When will KPUD install the box at my home?

- A: After infrastructure is complete & KPUD has spliced fiber. Installs are scheduled with each homeowner. Look for updates & instructions via email.

Q: What can I expect during my KPUD install?

- A: KPUD will install a grey utility box (housing) on the outside of the home. A CPE is installed in the housing and connects to the fiber. KPUD will drill through the siding to the interior and install low voltage power wire to the Wallwart. An interior outlet is required to be within 10'-12' of the exterior housing.

Q: When can I contact the ISP to have internet activated?

- A: Once KPUD schedules your exterior install. View ISPs & services via [KPUD.BROADBANDPORTAL.NET](https://www.kpud.org/kpud-broadband-portal-net)

Q: Will my neighbor pay less if they wait to connect?

- A: No, late participants will be charged the final LUD assessment costs plus additional construction costs to connect their home.

Q: Will the ISP provide a router?

- A: This should be discussed with your chosen ISP. Most homeowners purchase their own router.

Q: Can I connect my router to the box myself?

- A: KPUD recommends that your ISP completes the install. Damages to the KPUD equipment result in \$150 tampering fee.

Q: When will I know what my final assessment will be?

- A: First, KPUD must receive all final invoices & approval from the 3 state agencies which can take up to 3-5 months. Then, KPUD begins the LUD finalization. Finalization will occur in June or December.
- KPUD will send final assessment documents via mail.
- Payment due dates are offset with property taxes. KC Treasurer's Office will send notices following the final hearing allowing 30 days to pay full or partial assessment prior to the interest and lien finalization.

Contacts

OURFIBER@KPUD.ORG

Angela Bennink
Telecom Director
angela@kpud.org
360-626-7760

Stan Smelcer
Field Manager
smelcer@kpud.org
360-626-7749

Allison Cotner
Telecom Community &
Contracts Specialist
acotner@kpud.org
360-626-7701

Bob Hunter
General Manager
bob@kpud.org
360-626-7714

Maria Bezushko
Telecom Admin &
Community Engagement
mbezushko@kpud.org
360-626-7726