



**KITSAP COUNTY**  
Parks Department

614 Division Street, MS-1, Port Orchard, WA 98366

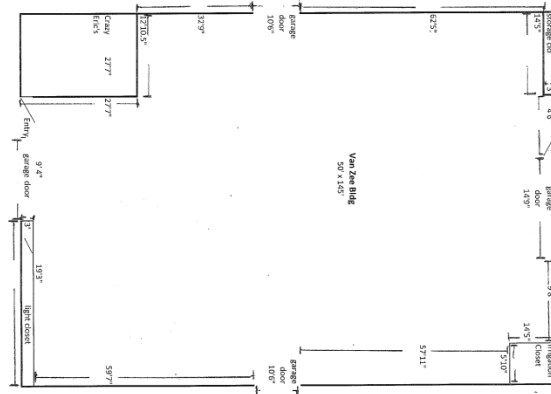
www.kitsapgov.com/parks

360-337-5350

Fax 360-337-5385

## Facility Fact Sheet

### Van Zee



<b>Size</b>	6,886 SF	50' x 145'
<b>Capacity</b>	250	Holds 50 Booths
<b>Ceiling height</b>	13' to beams	<b>Electrical</b> – 60 110 outlets, 13 220
<b>Parking</b>	45 dedicated (shared with Presidents' Hall) + 367 Adjacent	
<b>Roll up door height</b>	12' front and back, 8' side	
<b>Roll up door width</b>	1 @ 9'4", 2 @ 10'6", 1 @ 14'9"	

#### Amenities (provided with the building rental):

Dedicated parking lot  
60-110, 13-220 Outlets  
Easy move in and out  
ATM on grounds  
Garbage support

Propane hookups  
Set up Support  
Tear down support  
6 yard dumpster  
Key access

Discounts at hotels  
Marketing countywide  
Concessions  
4 Garage Doors  
WiFi can be placed

## Available for additional fees:

Chairs (stack/ folding)	Stage flags	Additional dumpsters
Tables (round and rectangular)	Santa's chair	Ticketing service
Spider Boxes	Temporary fencing	Off Site reader board
Sinks	Barricades	Easels
RV Parking	Dedicated attendant	Roller derby flooring
Podium	Late night crew	Banner hanging
	Early morning crew	Steel dividers

**Gordon Sound provides** Pipe and drape, PA system, Staging, Lighting, AV Equipment

## Event Types

### The Van Zee is Great for:

- Food Shows & Festivals
- Garage Parties
- Celebrations
- Sales Events
- Trainings
- Concession Building for multi-building event
- Auctions
- Demonstrations
- Fundraising Events
- Science Fairs
- Swap Meets
- Animal Events
- Small Scale Performances.