



# KITSAP PUBLIC UTILITY DISTRICT

---

**Kingston Community Advisory Council**

*October 11, 2023*

# KPUD Staff

---

**Dave Epperson**  
Director of Operations

**Tom Colby, Ph.D.**  
Hydrogeologist

**Stephanie Hall**  
Telecom Business Dev & Community Relations

# Contents

---

## Water

- KPUD's Role in Kitsap County
- Water Resource Management
- Logging and Climate
- Regional Infrastructure/Water System Info
- Greater Kingston Area Projects
- Rate Study

## Telecommunications

- KPUD's History in Telecom
- KPUD Fiber Optic Network
- Greater Kingston Area Projects
- Affordability Connectivity Program

# KPUD Water Role

---

## Growth Management Act – 1990

- Required Kitsap County to develop a comprehensive plan to include 14 goals to manage population growth (RCW 36.70A.020)
  - “(10) Environment. Protect and enhance the environment and enhance the state's high quality of life, including air and water quality, and the availability of water.”

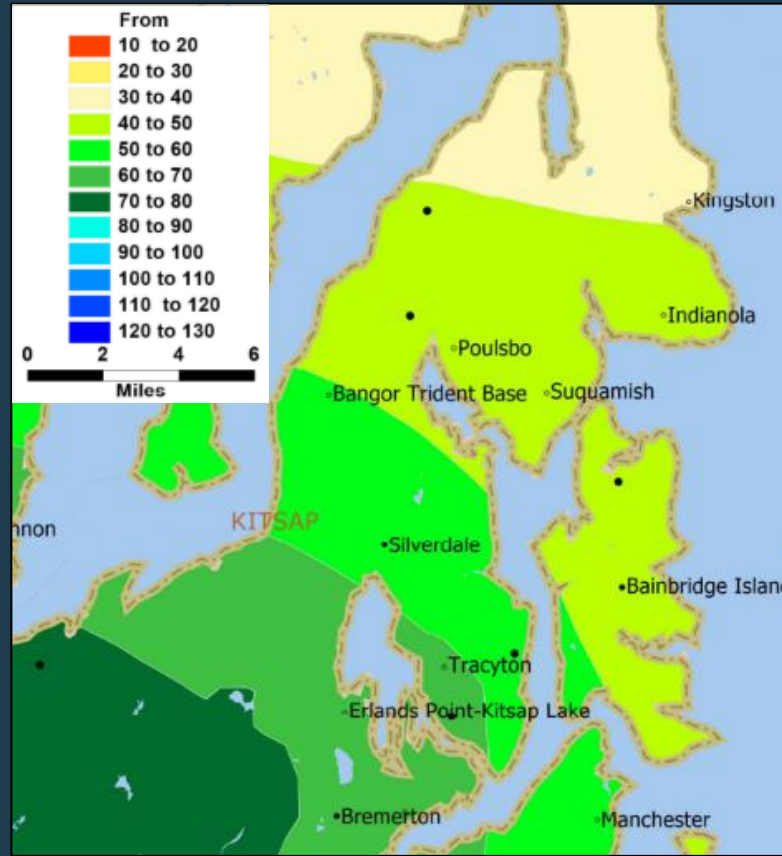
## Memorandum of Understanding KPUD and Kitsap County – 1994

- “...the County recognized that KPUD is responsible for the technical, managerial, financial, operational and support services which are needed to provide satisfactory water resource management including development, protection, supply, and utility service.”
- “The County designates that the District will serve as the technical lead agency for the County in proposing, planning, coordinating, and providing regional water resource management and supply service.”

# Precipitation Data

## 28 Stations in Kitsap County

- 17 KPUD stations (5-minute data)
- 11 sites by volunteers



# Streamflow Data



28 streams with 10 stations providing real-time telemetry (15-min data)

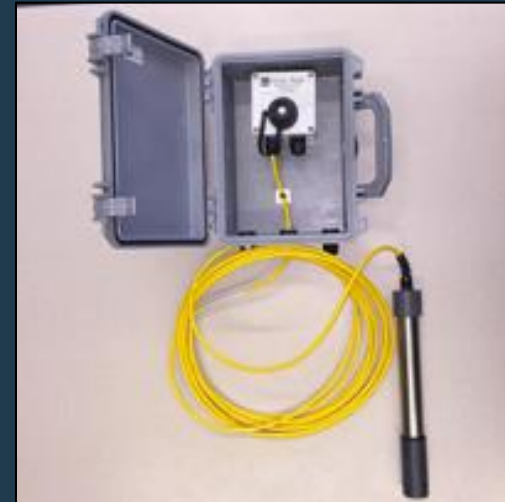


# Groundwater Levels

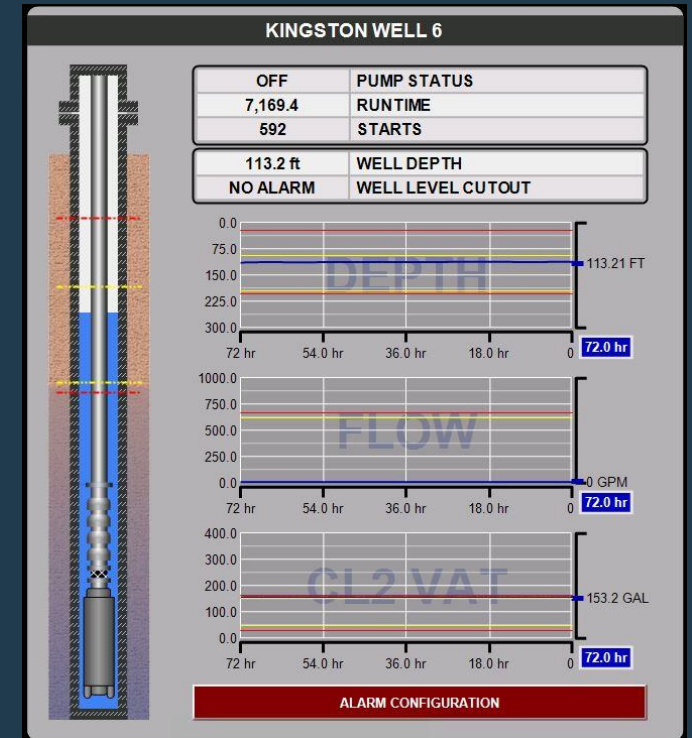
Collect data from ~120 wells throughout Kitsap County



Manual Measurements

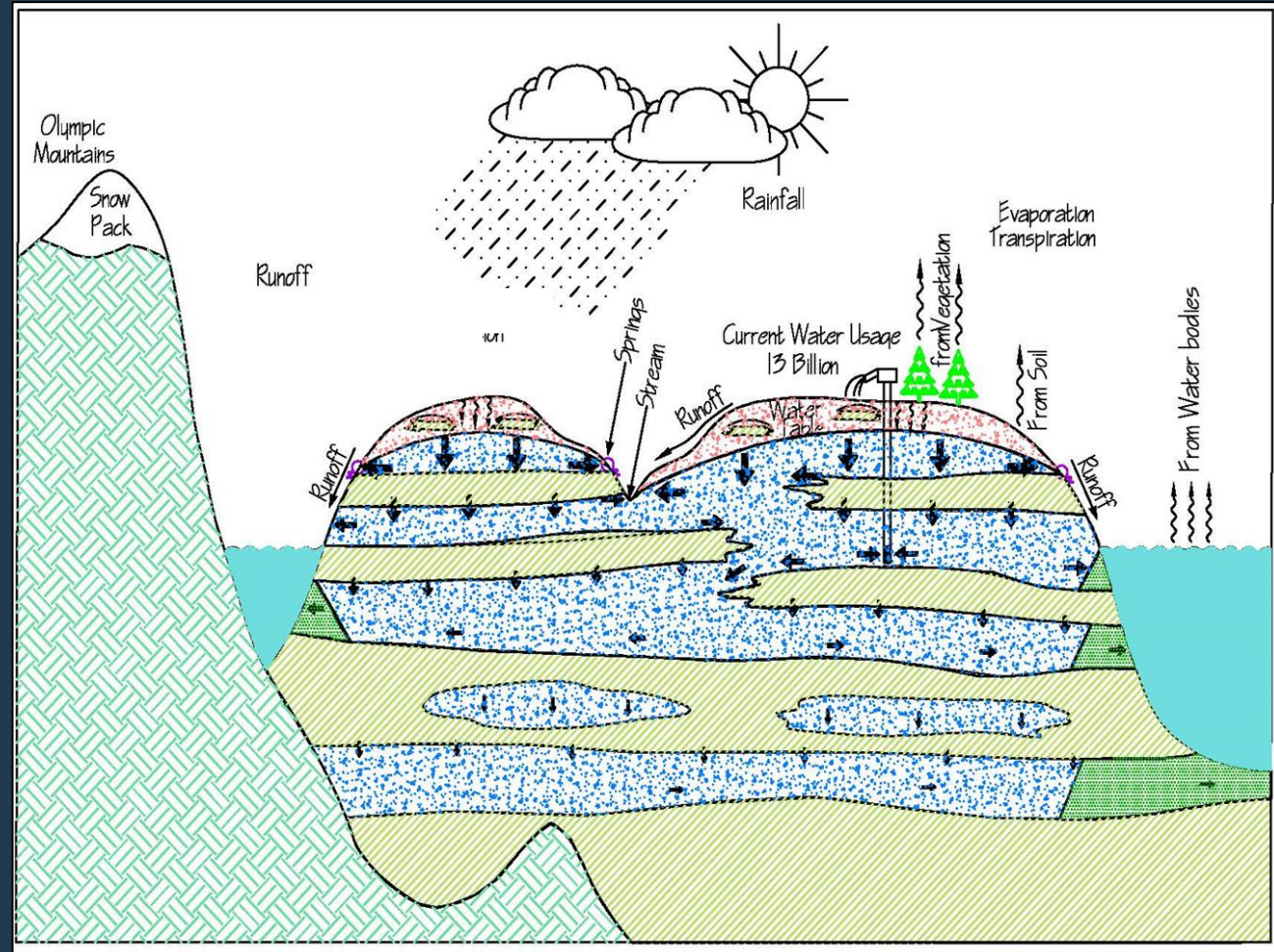


Transducers and Telemetered Wells



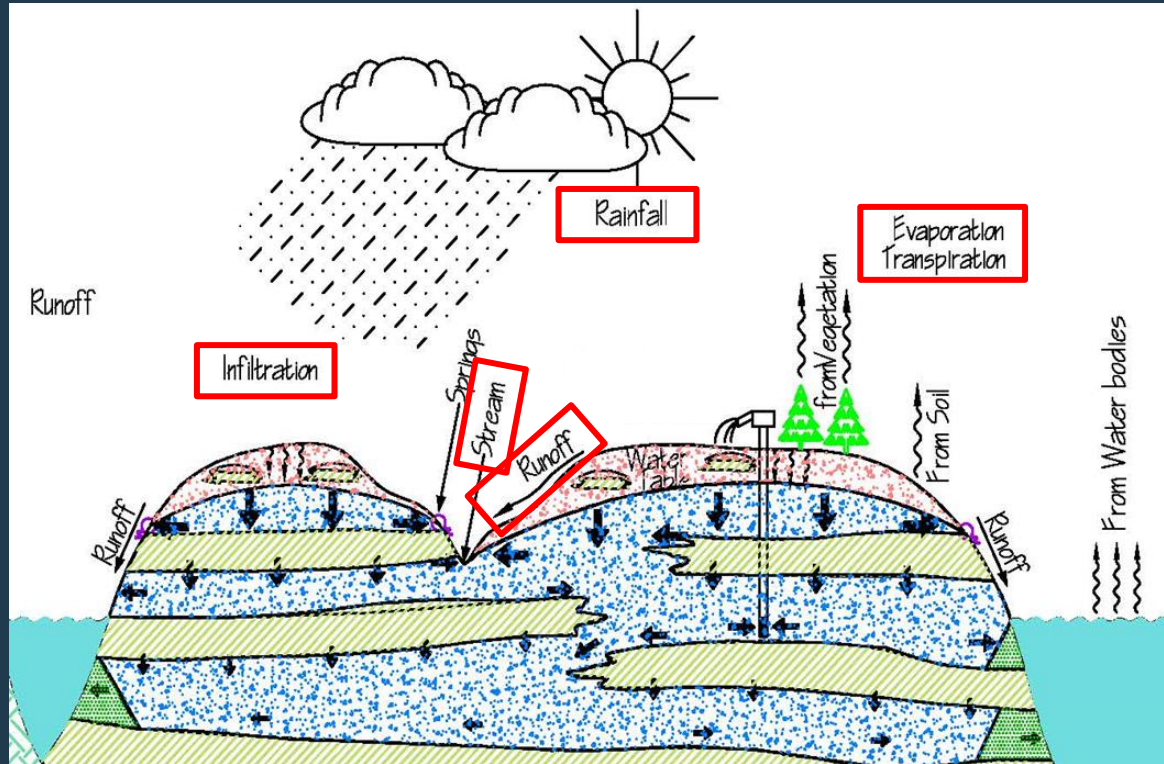
# Resource Management

Informed  
management  
of water  
resources in  
Kitsap County

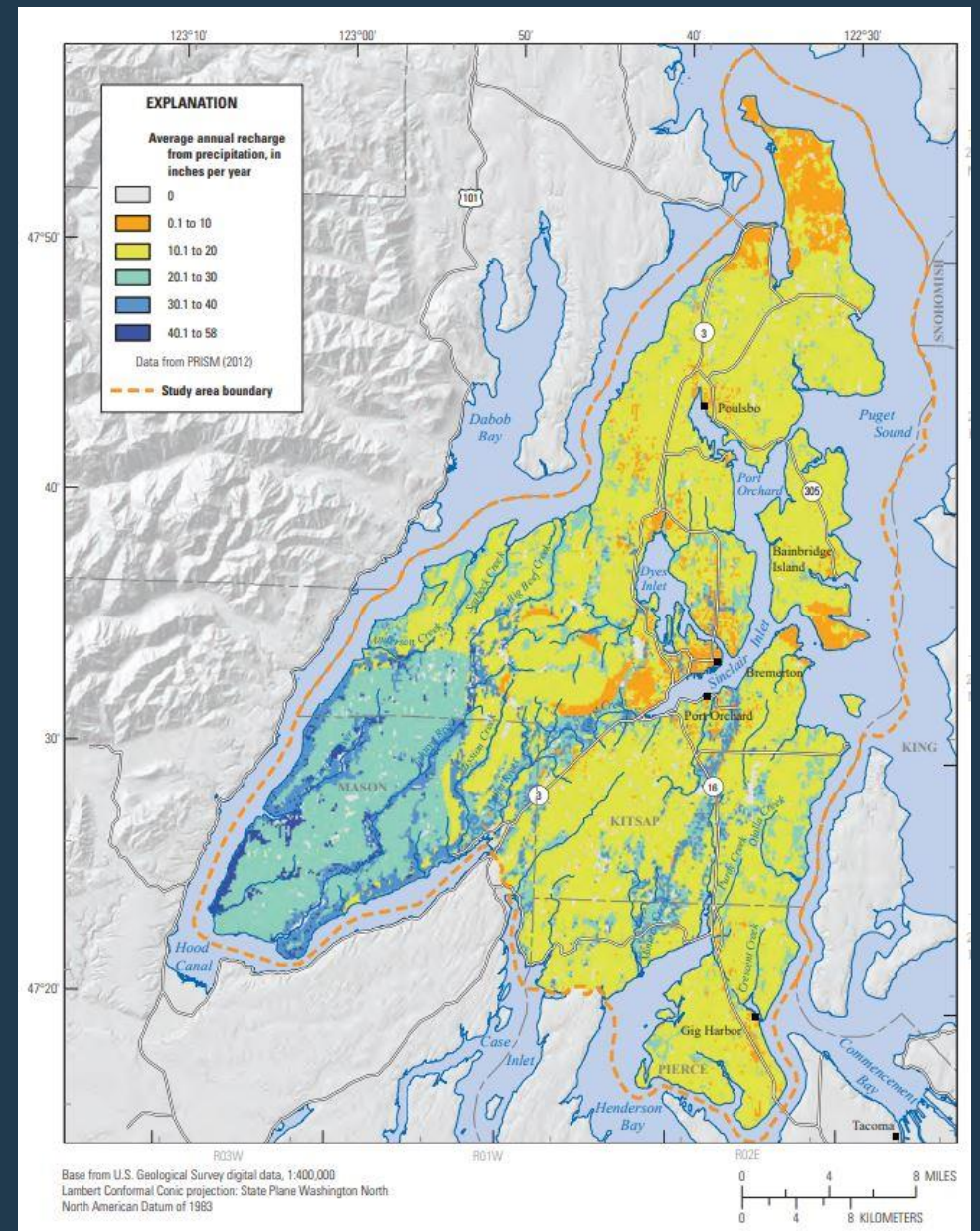




# Aquifer Recharge



Roughly 1/3 to 1/2 of annual precipitation becomes recharge



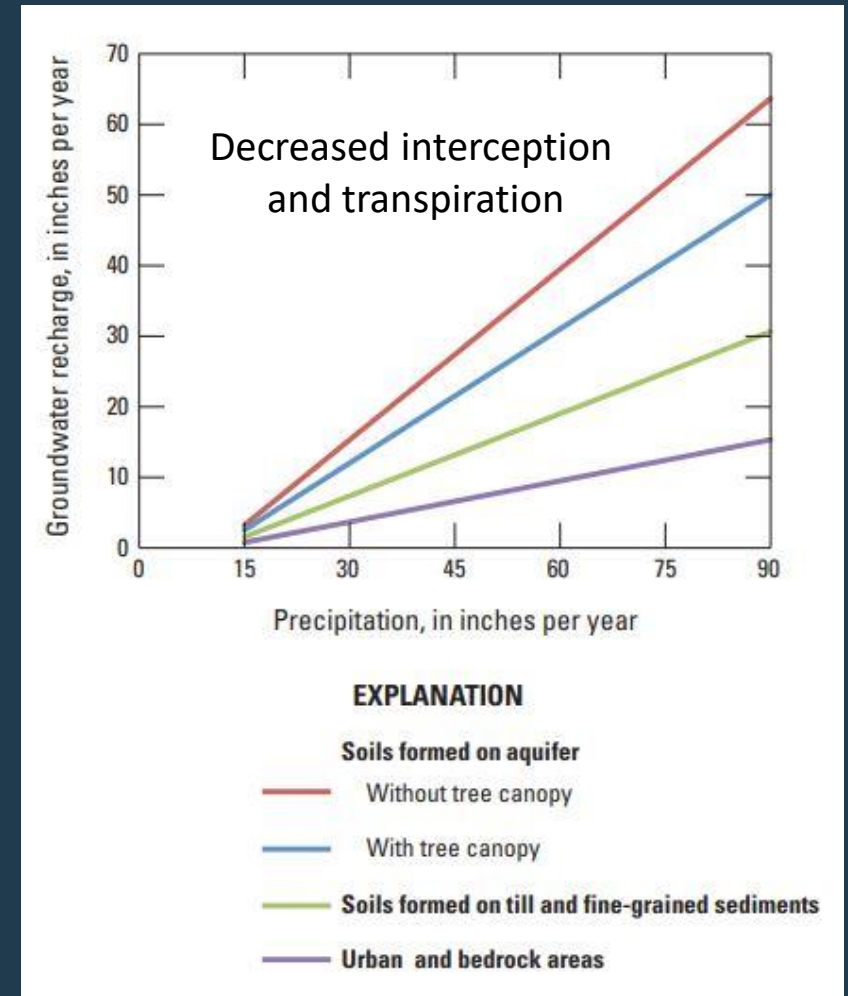
USGS (2014)

# Logging Impacts to Recharge



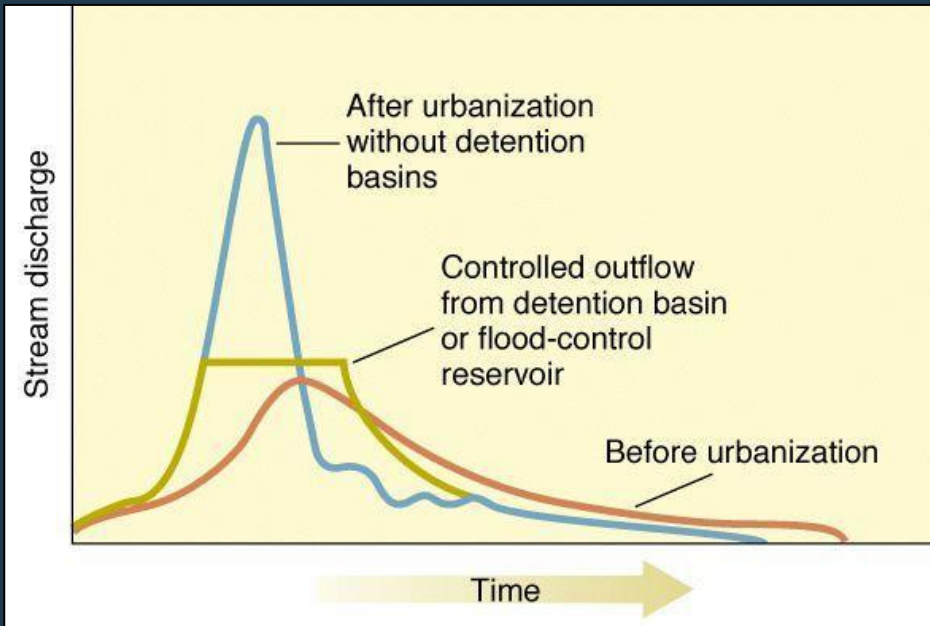
1905, photo by Darius Kinsey (Library of Congress)

Increased recharge with removal of tree canopy.  
What about development?

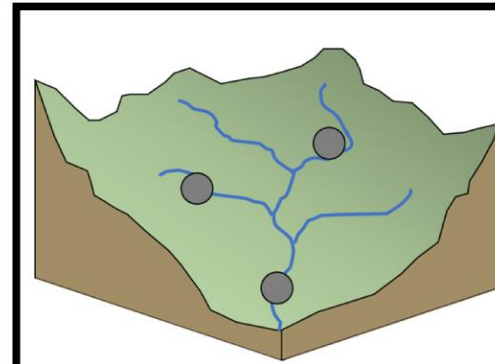


USGS (2014)

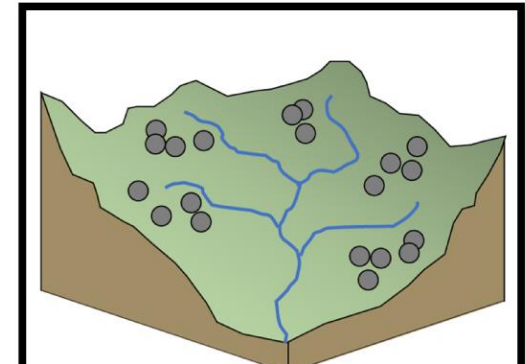
# Stormwater Management



Shoal Creek Conservancy



**Centralized stormwater management**  
A few, large practices



**Distributed stormwater management**  
Many, smaller practices

USGS



KPUD, Finn Hill Office



# Climate Change in PNW

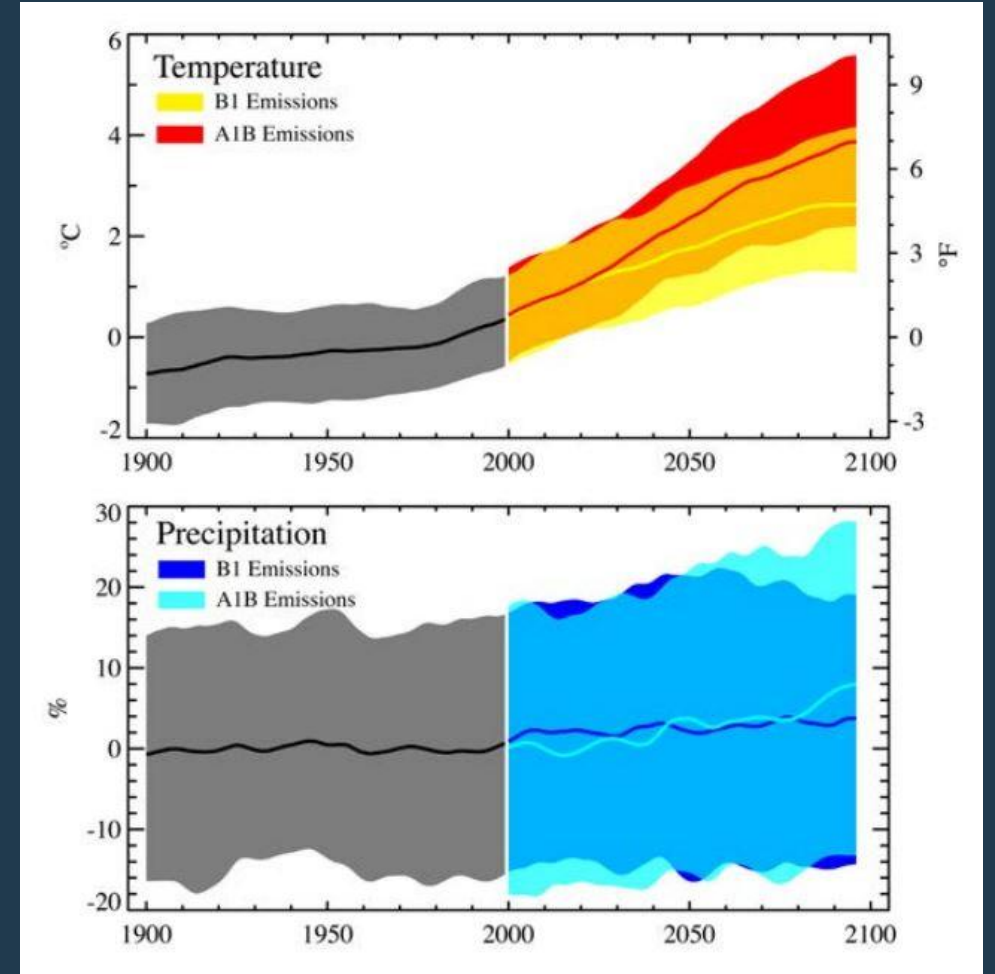
## Increased temperatures

- Rising snowline, more precipitation as rain

## Little to no change in annual precipitation

- Less summer rain, more fall/winter/spring rain

## Recharge in Kitsap County??

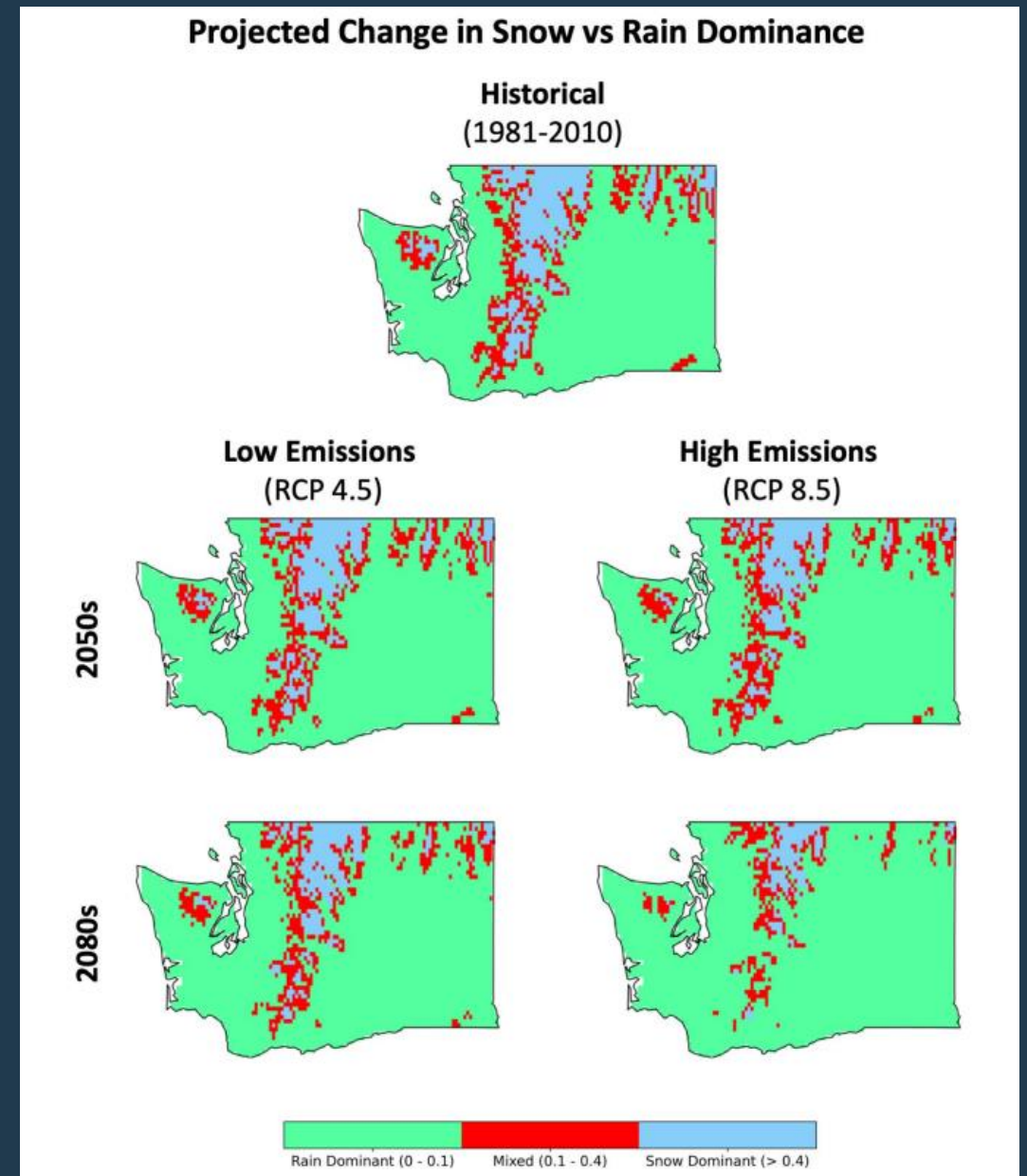


*Littell et al. (2009)*

# Water Resource Impacts

Increase in rain-dominated basins

- No change to Kitsap County



Yoder & Raymond (2022)

# Water Resource Impacts

Change in low-flow in 2080s compared to 1980-2009

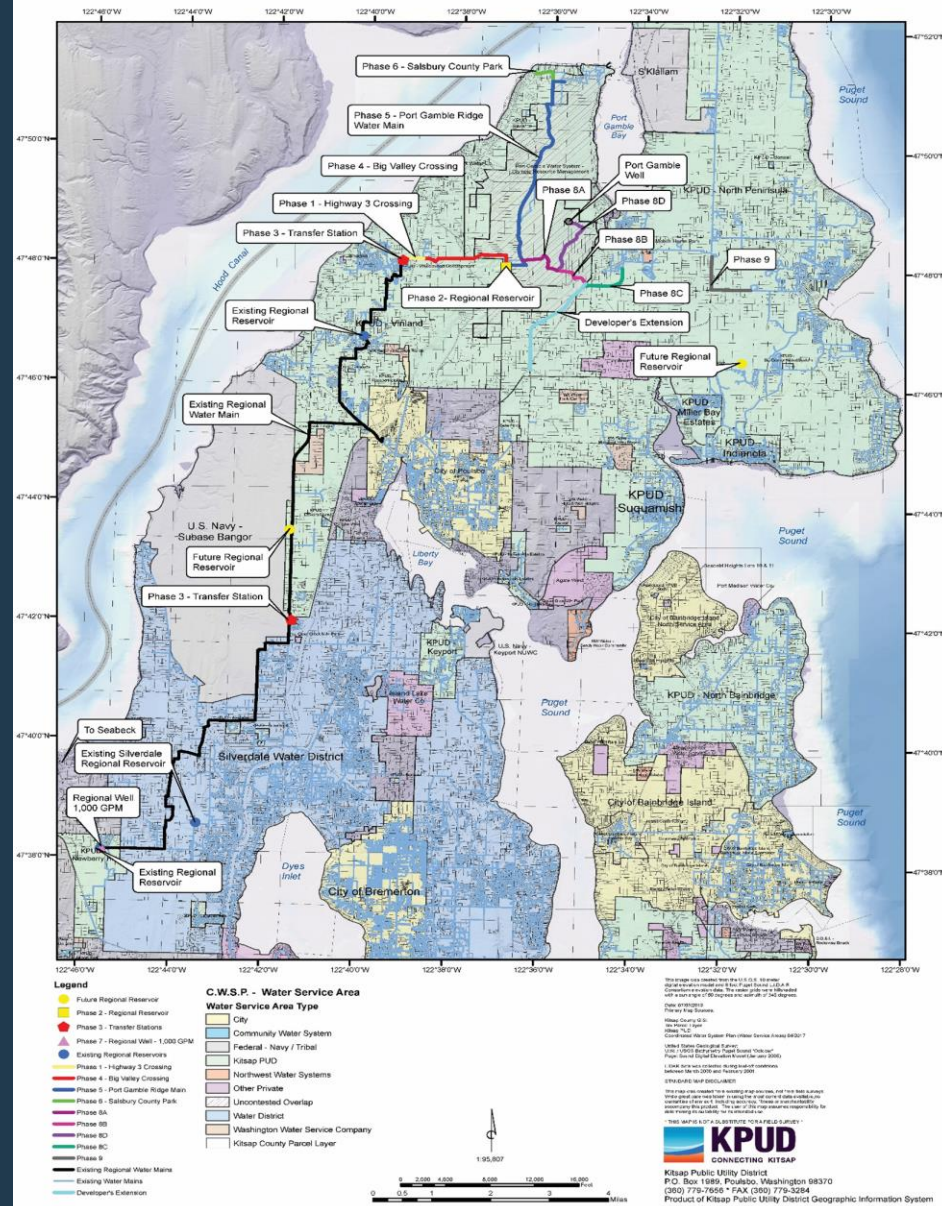
## Changes in summer streamflow

- Decreased flow in snow-dominated basins (less snowpack and early melt)
- Little to no change in Kitsap County

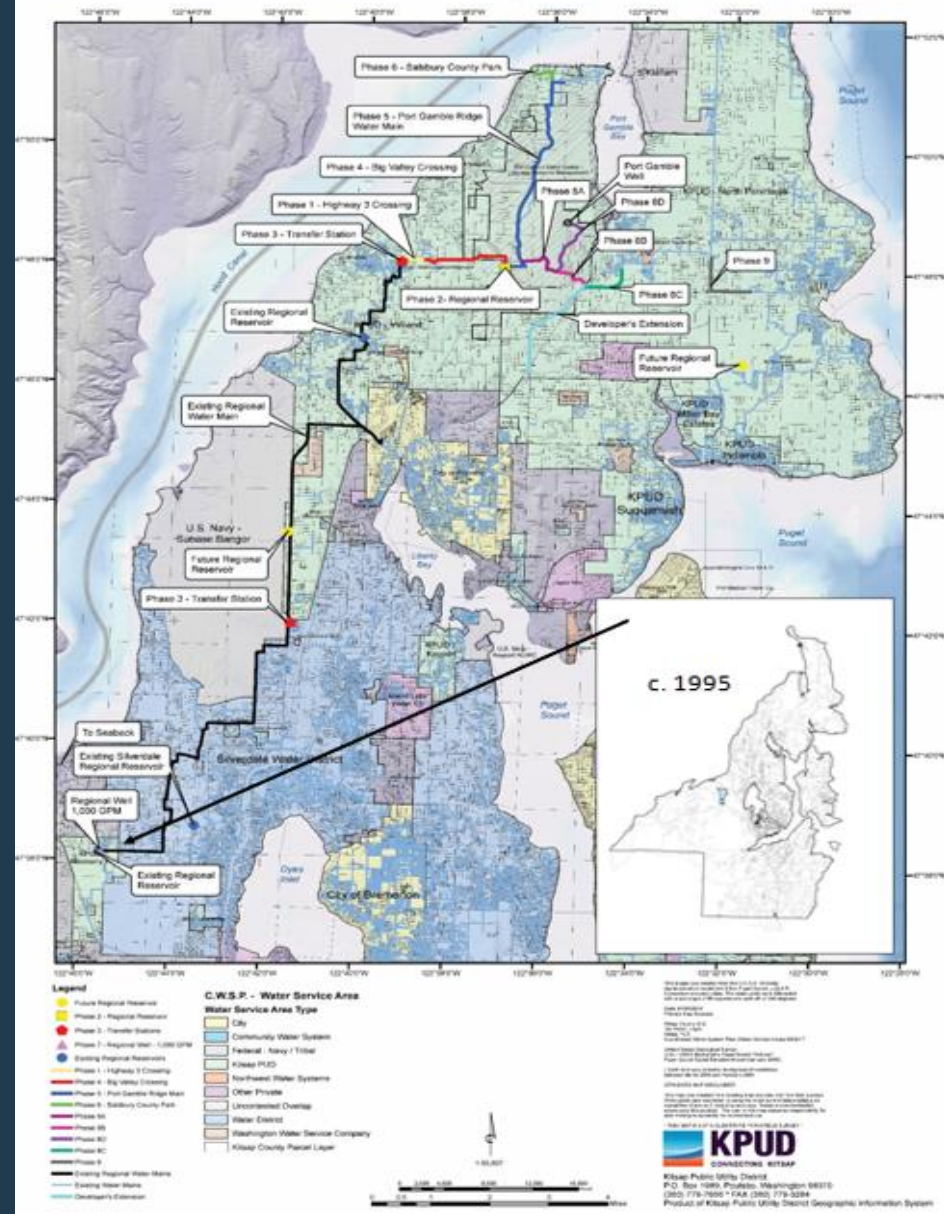


Yoder & Raymond (2022)

# Regional Water System Infrastructure Improvements

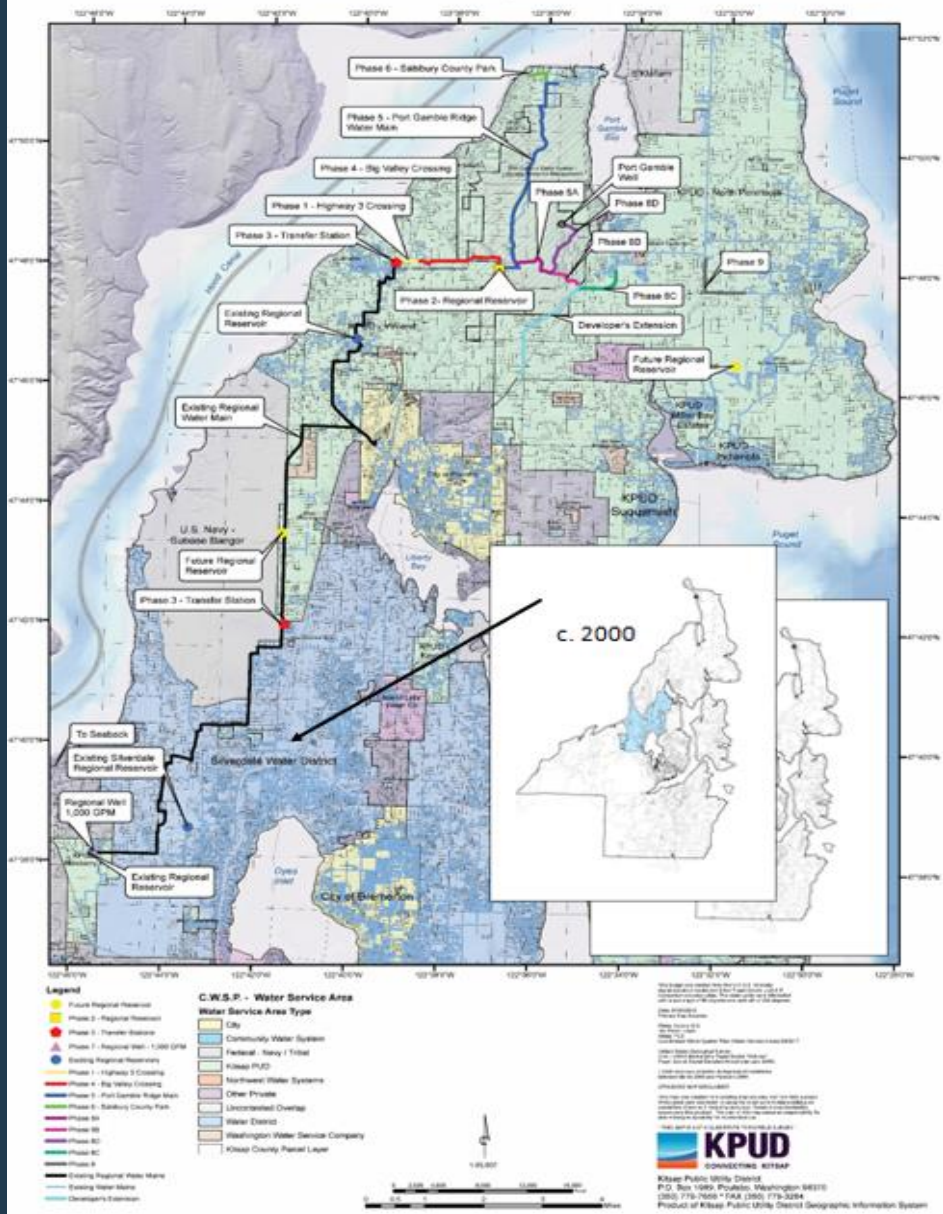


# Regional Water System Infrastructure Improvements

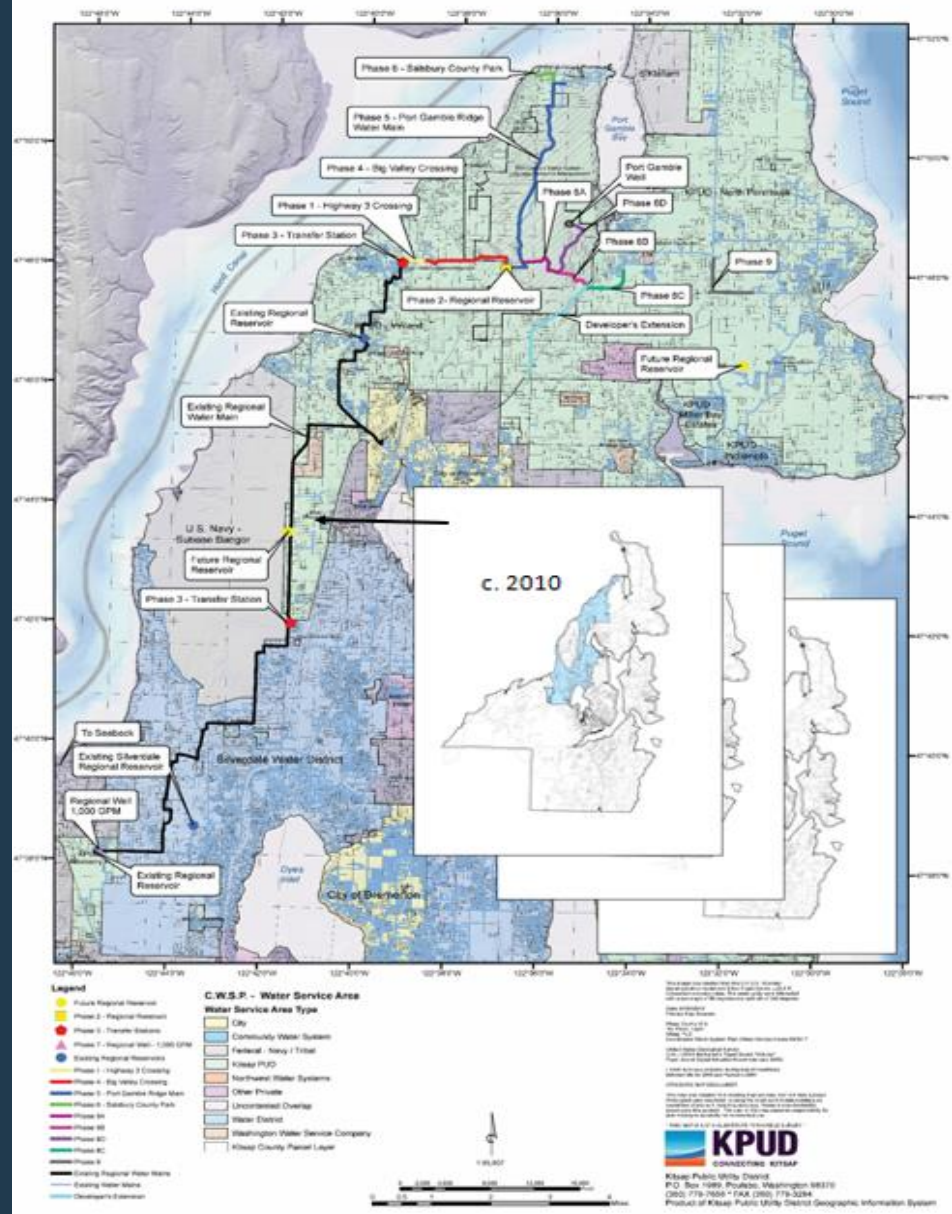




# Regional Water System Infrastructure Improvements

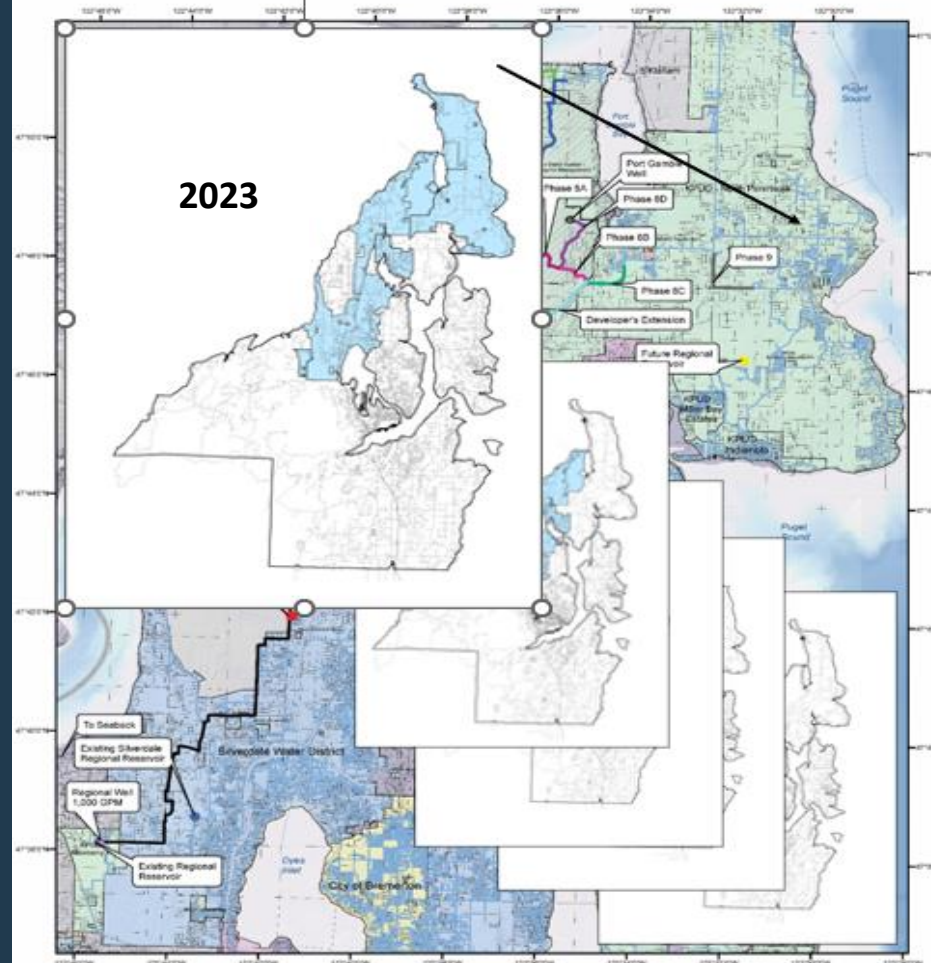


# Regional Water System Infrastructure Improvements





Regional Water System  
Infrastructure Improvements



- Legend**
- Phase 6 - Regional Well
  - Phase 5 - Regional Well
  - Phase 5 - Transfer Station
  - Phase 5 - Regional Well - 1,000 GPM
  - Existing Regional Reservoir
  - Phase 4 - Highway 3 Crossing
  - Phase 4 - Big Valley Crossing
  - Phase 5 - Port Gamble Ridge Area
  - Phase 5 - Skilling County Park
  - Phase 5B
  - Phase 5D
  - Phase 5C
  - Phase 5
  - Existing Regional Water Works
  - Existing Water Works
  - Developer's Extension
- C.W.S.P. - Water Service Area**
- Water Service Area Type**
- City
  - Community Water System
  - Federal - Navy / Tribal
  - Kitsap PUD
  - Non-Transit Water Systems
  - Other Private
  - Unincorporated Overlay
  - Water District
  - Washington Water Service Company
  - Kitsap County Parcel Layer

**KPUD**  
CONNECTING KITSAP

Kitsap Public Utility District  
P.O. Box 1080, Puyallup, Washington 98370  
(360) 779-7055 • FAX (360) 779-3264  
Product of Kitsap Public Utility District Geographic Information System



# North Peninsula Water System



## **North Peninsula Water System**

- Serves Gamblewood, Hansville and Kingston communities



## North Peninsula Water System

- Serves Gamblewood, Hansville and Kingston communities
- Can also provide water to the Indianola water system



## North Peninsula Water System

- Serves Gamblewood, Hansville, and Kingston communities
- Can also provide water to the Indianola water system
- 8 existing groundwater wells can produce ~2,500 GPM, serving ~5,700 ERUs





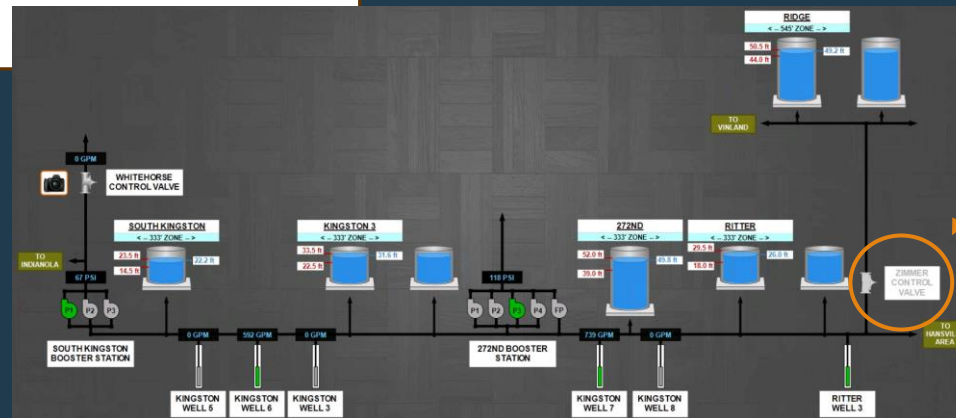
## North Peninsula Water System

- Serves Gamblewood, Hansville and Kingston communities
- Can also provide water to the Indianola water system
- 8 existing groundwater wells can produce ~2,500 GPM, serving ~5,700 ERUs
- Regional infrastructure will provide additional supply



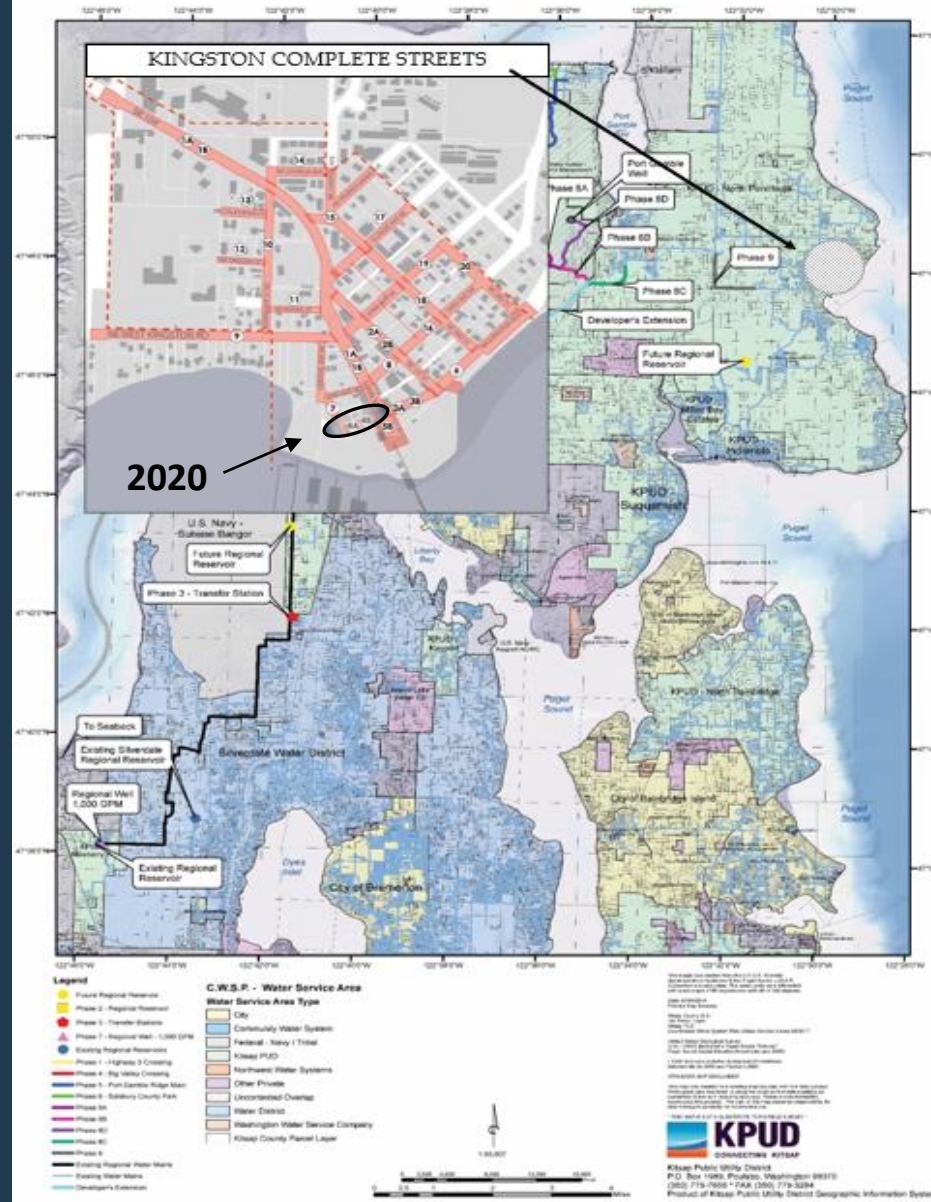
# North Peninsula Water System

- Serves Gamblewood, Hansville and Kingston communities
- Can also provide water to the Indianola water system
- 8 existing groundwater wells can produce ~2,500 GPM, serving ~5,700 ERUs
- Regional infrastructure will provide additional supply



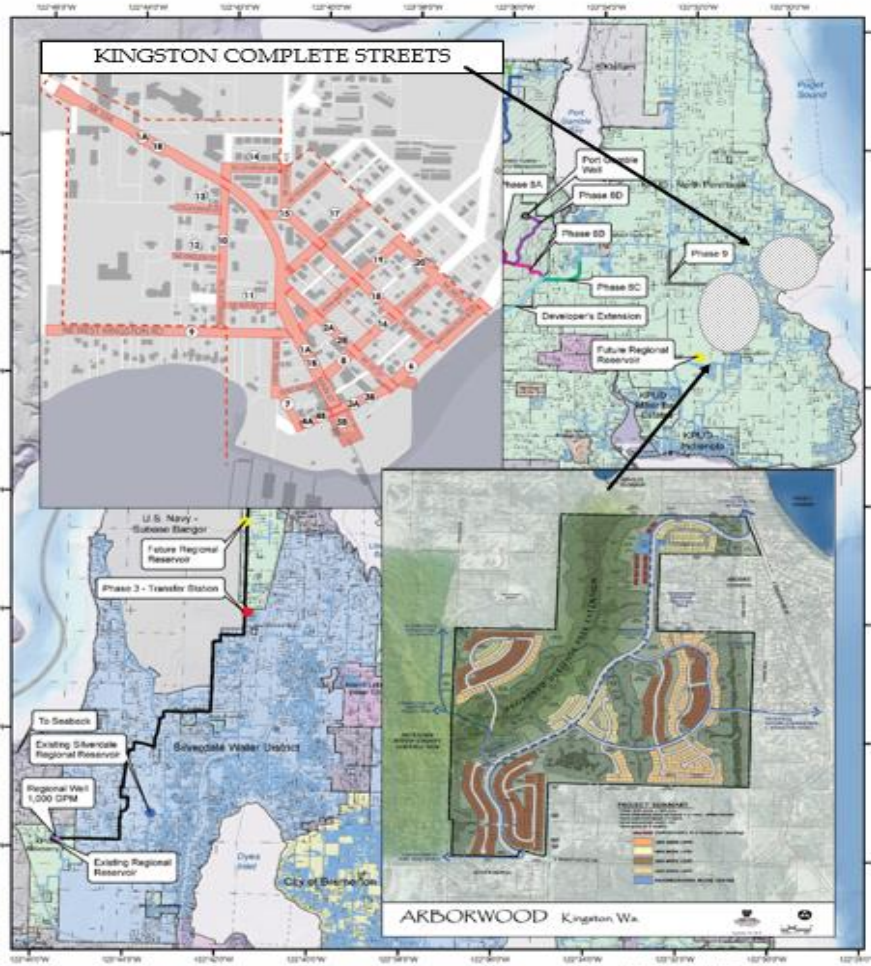


Regional Water System  
Infrastructure Improvements





Regional Water System  
Infrastructure Improvements



**Legend**

- Future Regional Reservoir
- Phase 2 - Regional Reservoir
- Phase 3 - Transfer Station
- Phase 1 - Regional Well - 1,000 DPM
- Existing Regional Reservoir
- Phase 1 - Highway 2 Crossing
- Phase 4 - Big Water Crossings
- Phase 5 - Panhandle Ridge Main
- Phase 6 - Solvada County Park
- Phase 8a
- Phase 8b
- Phase 8c
- Phase 8d
- Phase 9
- Existing Regional Water Main
- Existing Water Main
- Developer's Extension

**C.W.S.P. - Water Service Area**

**Water Service Area Type**

- City
- Community Water System
- Federal - Navy 1 Tridal
- Knap PUD
- Non-Trivial Water Systems
- Other Private
- Unclassified Overlay
- Water Electric
- Washington Water Service Company
- Knap County Parcel Layer

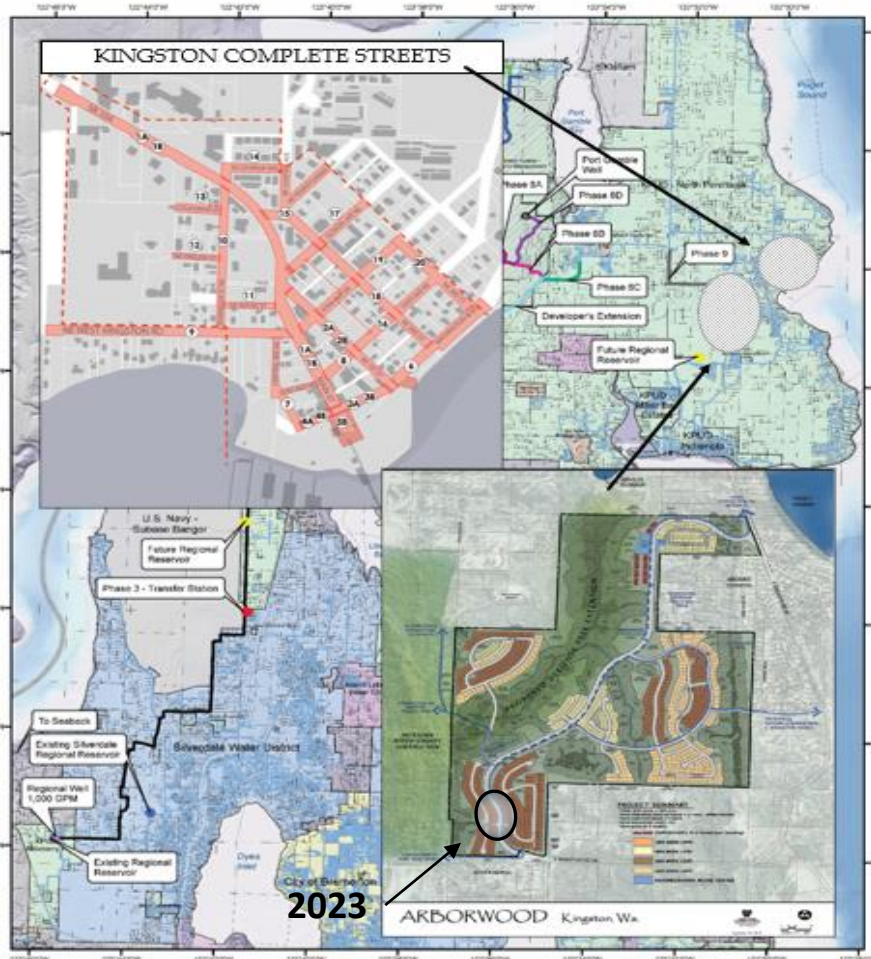
**Scale:** 1:62,500

**North Arrow**

**Knap Public Utility District**  
CONNECTING KITSAP

Knap Public Utility District  
P.O. Box 1080, Puyallup, Washington 98370  
(360) 779-7658 • FAX (360) 779-3264  
Product of Knap Public Utility District Geographic Information System

Regional Water System  
Infrastructure Improvements



2023

**Legend**

- Future Regional Reservoir
- Phase 2 - Regional Reservoir
- Phase 3 - Transfer Station
- Phase 1 - Regional Well - 1,000 DPM
- Existing Regional Reservoir
- Phase 1 - Highway 2 Crossing
- Phase 4 - Big Water Crossings
- Phase 5 - Panhandle Ridge Main
- Phase 6 - Solvada County Park
- Phase 8a
- Phase 8b
- Phase 8c
- Phase 8d
- Phase 9
- Existing Regional Water Main
- Existing Water Main
- Developer's Extension

**C.W.S.P. - Water Service Area**

**Water Service Area Type**

- City
- Community Water System
- Federal - Navy 1 Tridal
- Kitsap PUD
- Non-Trivial Water Systems
- Other Private
- Unclassified Overlay
- Water Electric
- Washington Water Service Company
- Kitsap County Parcel Layer

**Kitap Public Utility District**  
CONNECTING KITSAP

Kitap Public Utility District  
P.O. Box 1080, Puyallup, Washington 98370  
(360) 779-7658 • FAX (360) 779-3264  
Product of Kitap Public Utility District Geographic Information System

# Utilities Rate Study



## Join the Conversation! Public Meetings & Public Hearing Kitsap Public Utility District Utilities Rate Study

KPUD has been working with a public sector utility and financial consulting firm to conduct a comprehensive utility rate study for water, wastewater, and telecommunications services.

As a community-owned utility, our rates are required to cover the cost of providing services. This study will assist in determining revenue needs to ensure rates and other resources fully cover all utility costs. It will also help design rates that balance KPUD priorities and preserve revenue stability.

The KPUD Board of Commissioners will discuss the study findings and rates at meetings on September 12 and September 26, and will hold a public hearing on October 25, 2023.



### WHEN

Tuesday, September 12 - 9am  
Tuesday, September 26 - 9am  
Wednesday, October 25 - 6pm

### WHERE

In-Person or Virtual  
KPUD Offices - 1431 NW Finn Hill Road, Poulsbo, WA  
Virtual via Zoom: <http://bit.ly/KPUDBoardMeeting>



Kitsap Public Utility District | 360.779.7656 | [WWW.KPUD.ORG](http://WWW.KPUD.ORG)



**KPUD  
Telecom -  
Fiber Internet**

---

**History**

---

**Residential Fiber Expansion**

---

**KPUD Fiber Internet**

---

**How to get KPUD Fiber Internet**

---

**Kingston Area Projects**

# KPUD's Telecom Milestones

## 2000s

- ✓ KPUD connects key community institutions.
- ✓ Establishes an open-access network, allows ISPs to provide monthly internet service on the network - creates competition.

## 2015

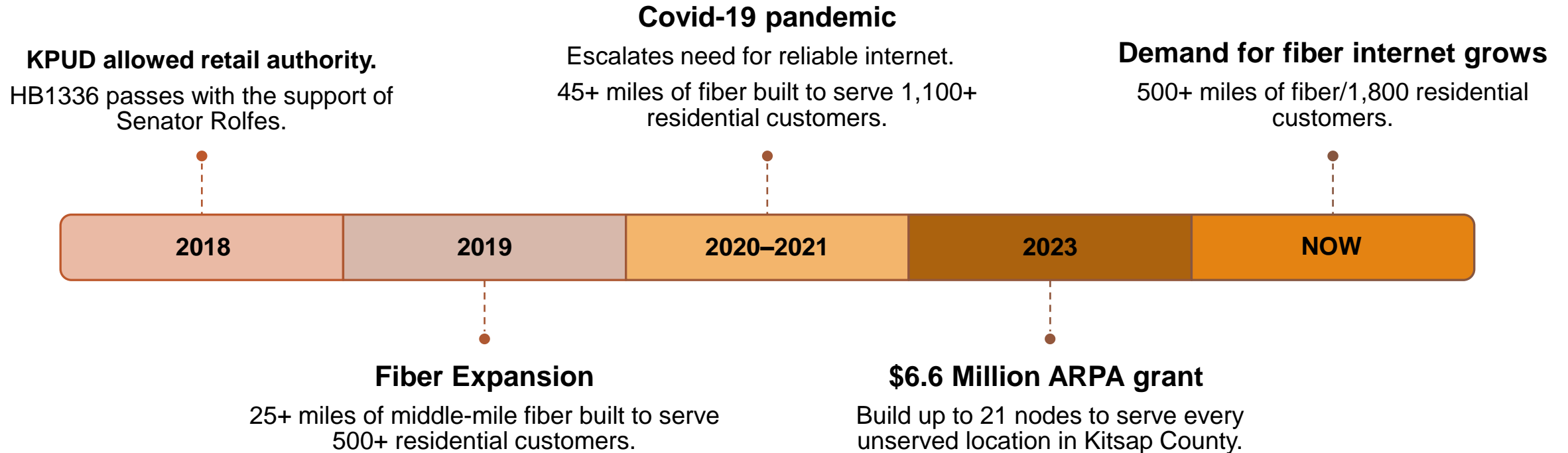
- ✓ KPUD surveys the community, realizes need for reliable internet service and starts to expand to residential customers.

## 2016 - present

- ✓ KPUD focuses on connecting unserved/underserved communities throughout Kitsap.



# KPUD Residential Fiber Expansion



# KPUD Fiber Internet



Speeds up to 1 Gbps for Residential Customers



Speeds up to 1 Gbps for Residential Customers



Symmetrical Speeds (*upload speed = download speed*)



Dedicated Fiber Connection



Future Proof Network

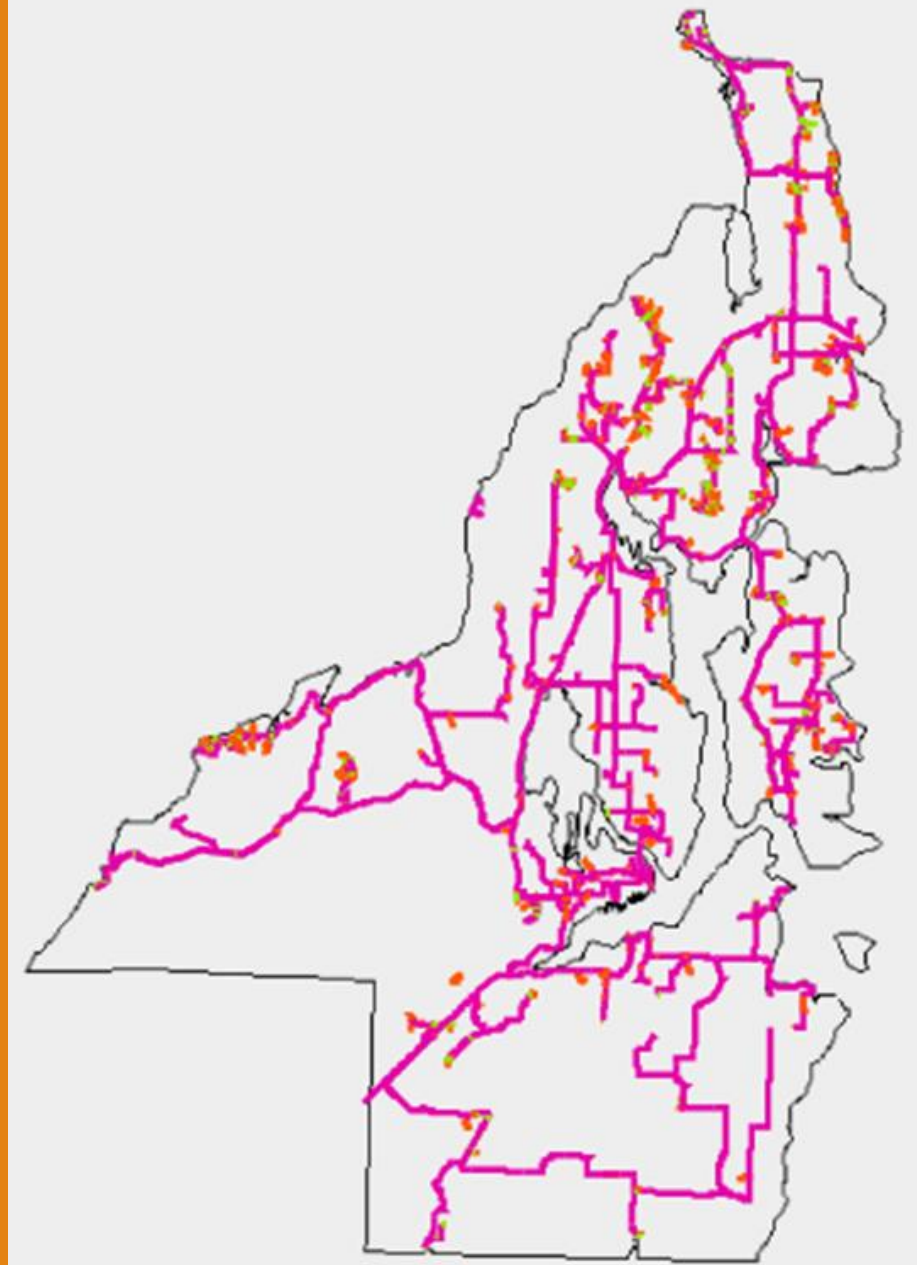


6 Residential ISPs to Choose from for Services

## ISP Monthly Residential Service Fees:

100 Mbps ► \$55-\$70

1 Gbps ► \$70-\$99



# KPUD Fiber to the Home

[www.kpud.org](http://www.kpud.org)



Check Availability

- ▶ If available, select ISP
- ▶ If not available, complete our community survey.
- ▶ Request an estimate





Home About Why Fiber? Contact

## Welcome to KPUD Fiber Internet!

Enter your address to find out if KPUD Fiber is available at your home. If KPUD Fiber is not available, you'll be asked to complete a 5-minute survey. Your survey responses help us determine where demand is greatest for KPUD Fiber. Thank you!

Enter your address to get started:

Address (Street #, Street, ZIP Code) Unit number [Find Address](#)

 <b>1 Gigabit Internet - No Contract!</b> <small>1000/1000</small> 1000Mbps Up and Down. Fast, Friendly and Reliable Internet Service. High Speed Fiber Optic Connection. No data caps or over charges.	<a href="#">Search address for availability</a> Monthly cost: \$89.95 Start cost: \$0.00 Contract period (months): 0 month/s Cancellation notice period (months): 1 month/s
 <b>Warp Speed Gigabit Internet</b> <small>1000/1000</small> True 1000mbps download and upload. Extremely low latency. No monthly data cap fees. Net253 supports net neutrality. No installation fee for homes with KPUD already installed and no site visit required! Redundant routes out of Kitsap.	<a href="#">Search address for availability</a> Monthly cost: \$95.00 Start cost: \$100.00 Contract period (months): 12 month/s Cancellation notice period (months): 1 month/s
 <b>Gig Internet - No Contract!</b> <small>1000/1000</small> With next-generation iFIBER Gig Internet you can transfer data at 1000 Megabits per second. That's up to 50x faster than the average download speed in America!	<a href="#">Search address for availability</a> Monthly cost: \$95.95 Start cost: \$108.95 Contract period (months): 0 month/s Cancellation notice period (months): 0 month/s
 <b>Residential Internet 1000</b> <small>1000/1000</small> Experience true gigabit Fiber Internet & Phone with local support. Kitsap Communications empowers the Olympic and Kitsap Peninsula communities by serving reliable high-speed Internet Access over Public and Private fiber and wireless networks with friendly local support. PC repair, wired and wireless networks for home and business.	<a href="#">Search address for availability</a> Monthly cost: \$99.00 Start cost: \$125.00 Contract period (months): 12 month/s Cancellation notice period (months): 1 month/s

# KPUD Fiber to Your Community

---

- **Generate Interest Among Neighbors**

- ✓ KPUD captures community interest from surveys and estimate requests.
- ✓ Neighborhood champion program.
- ✓ Neighbors share construction cost.

- **Form a Local Utility District**

- ✓ Financing mechanism for neighbors to share cost of improved utilities.
- ✓ Defined boundary – formal process, signed petitions, KPUD Board approval.
- ✓ Allows homeowner to finance over a 20-year period.
- ✓ KPUD hosts community meetings.



# Kingston Area Projects

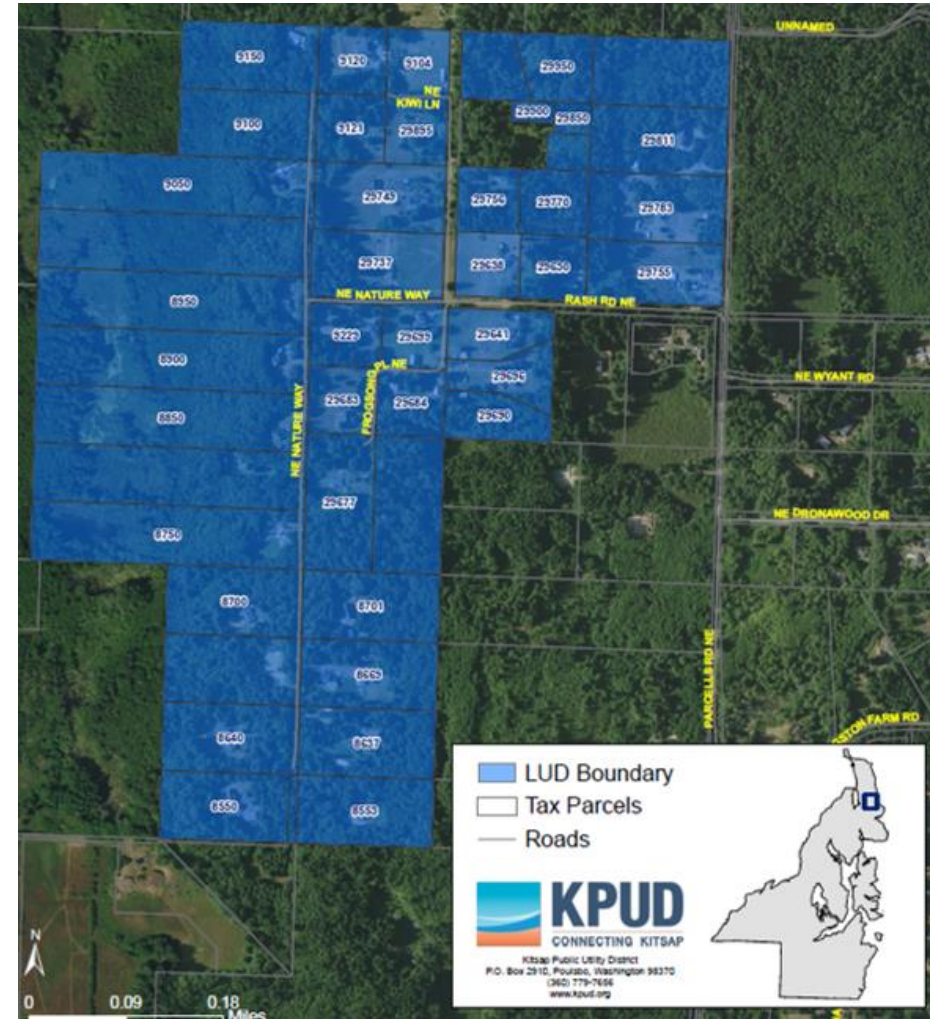
## Nature Way & Frogson Place

- Potential of ~45 customers
- Financing via Local Utility District (LUD) with 20-year term
- 80% grant funded through the CERB
- Community meeting held September 2023



### Community Economic Revitalization Board (CERB)

The Community Economic Revitalization Board (CERB) was formed in 1982 to respond to local economic development in Washington communities. CERB provides funding to local governments and federally-recognized tribes for public infrastructure which supports private business growth and expansion. Eligible projects include domestic and industrial water, storm water, wastewater, public buildings, telecommunications, and port facilities.



# Kingston Area Projects

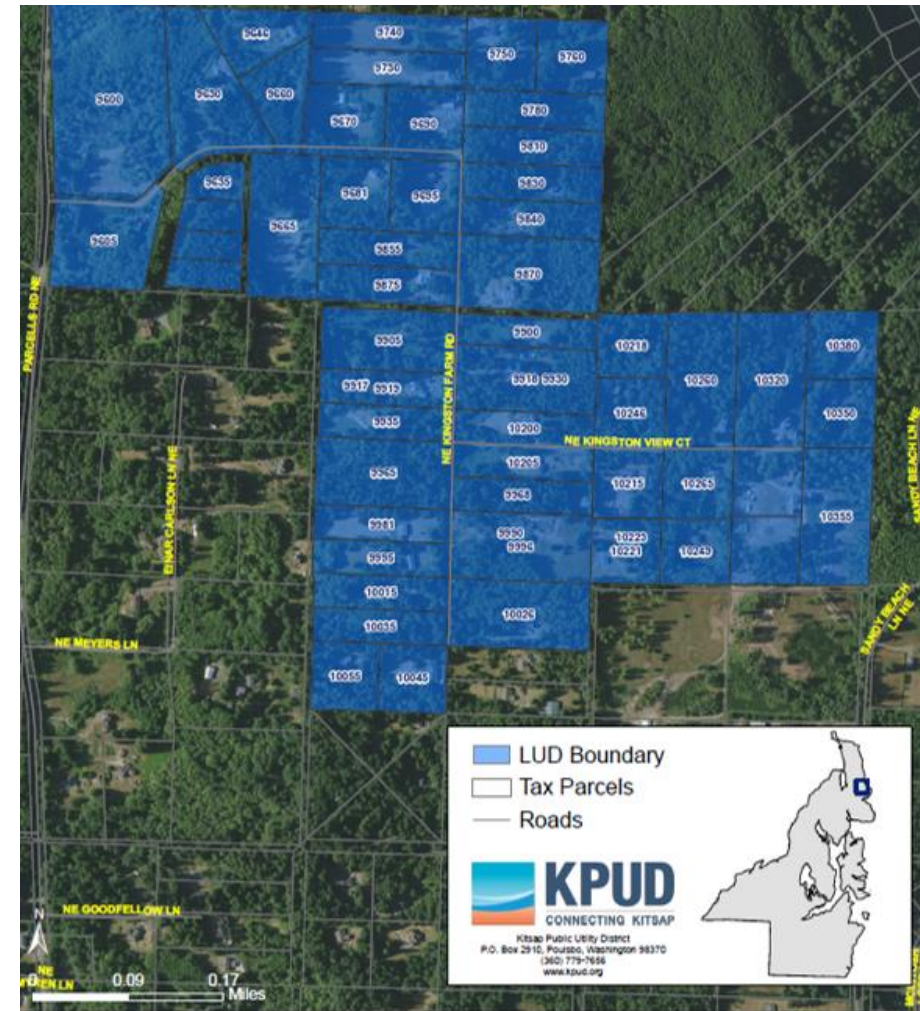
## Kingston Farms

- Potential of ~55 customers
- Financing via Local Utility District (LUD) with 20-year term
- 80% grant funded through CERB
- Community meeting held September 2023



### Community Economic Revitalization Board (CERB)

The Community Economic Revitalization Board (CERB) was formed in 1982 to respond to local economic development in Washington communities. CERB provides funding to local governments and federally-recognized tribes for public infrastructure which supports private business growth and expansion. Eligible projects include domestic and industrial water, storm water, wastewater, public buildings, telecommunications, and port facilities.

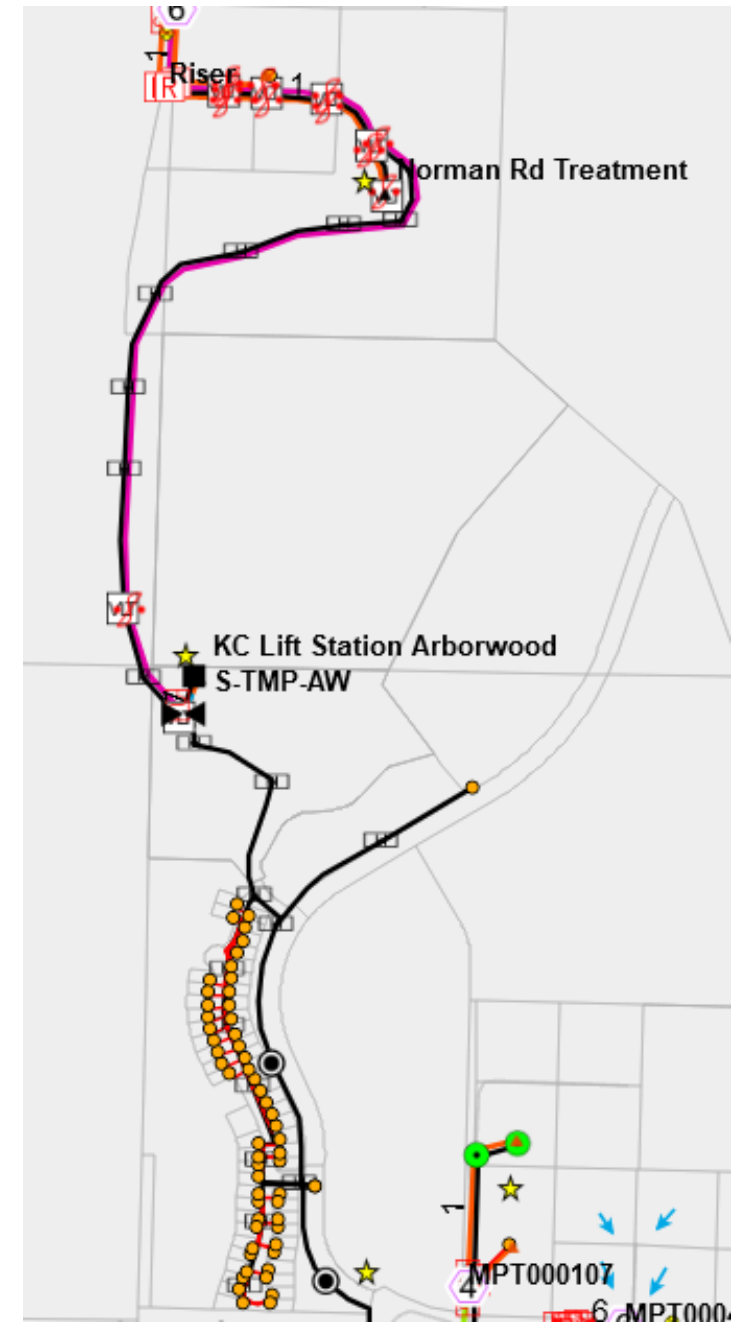




# Kingston Area Projects

## Arborwood

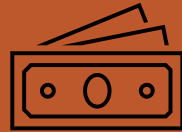
- New distribution node with the ability to serve all phases.
- KPUD conduit installed in Phase 1 only.
- No commitment from the developer; currently, no fiber installed



# Affordability Connectivity Program

The Affordable Connectivity Program (ACP) is a federally funded program that assists low-income households to pay for internet service and connected devices like a laptop or tablet.

**If your household is eligible, you could receive:**



Up to a \$30/month discount on internet service (\$75/month if your household is on qualifying tribal lands)



A one-time discount of up to \$100 for a laptop, tablet, or desktop computer.

## Washington State Enrollment\*

- ▶ 28% eligible participants enrolled in Washington
- ▶ National average – 38%
- ▶ Participants include iFiber, Astound, CenturyLink, Comcast

\*Data Source – Education SuperHighway



# Questions?

# Contact Information

---

**Dave Epperson**  
Director of Operations  
360.626.7732  
depperson@kpud.org

**Tom Colby**  
Hydrogeologist  
360.626.7721  
tcolby@kpud.org

**Stephanie Hall**  
Telecom Bus. Dev./Community Rel.  
360.626.7735  
shall@kpud.org

---

[www.kpud.org](http://www.kpud.org)